

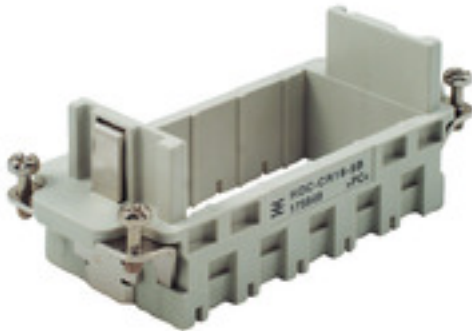
**HDC-CR16-5B GR****Weidmüller Interface GmbH & Co. KG**

Klingenbergstraße 26

D-32758 Detmold

Germany

www.weidmueller.com



The sturdy CR16 module frames are available in polycarbonate or die-cast zinc.

The frames are designed so that 5 individual modules or corresponding double modules can be installed. The CR16 frames are designed to fit the size-6 housings.

**General ordering data**

Version	Heavy-duty connectors, HDC insert, ConCept frame
Order No.	<a href="#">1758490000</a>
Type	HDC-CR16-5B GR
GTIN (EAN)	4032248019717
Qty.	5 pc(s).

Creation date February 20, 2023 11:53:54 AM CET

Catalogue status 03.02.2023 / We reserve the right to make technical changes.

**HDC-CR16-5B GR****Weidmüller Interface GmbH & Co. KG**

Klingenbergstraße 26

D-32758 Detmold

Germany

www.weidmueller.com

**Technical data****Dimensions and weights**

Depth	84.5 mm	Depth (inches)	3.327 inch
Height	35 mm	Height (inches)	1.378 inch
Width	34 mm	Width (inches)	1.339 inch
Net weight	29.94 g		

**Temperatures**

Limit temperature	-40 °C ... 125 °C
-------------------	-------------------

**ConCept Pneumatic module**

Colour	beige	UL 94 flammability rating	V-0
--------	-------	---------------------------	-----

**Dimensions**

Height of socket	35 mm	Total length base	84.5 mm
Width	34 mm		

**General data**

BG	6	Material	Polycarbonate
Number of poles	1	Series	ConCept frame
Size	6	Type	Female
UL 94 flammability rating	V-0		

**Connection data PE**

Connection type PE	Screw connection	Tightening torque, max. PE connection	1.5 Nm
Tightening torque, min. PE connection	1.2 Nm		

**Version**

BG	6	Material	Polycarbonate
Size	6	Wire connection cross section AWG, max.	AWG 14

**Classifications**

ETIM 6.0	EC002312	ETIM 7.0	EC002312
ETIM 8.0	EC002312	ECLASS 9.0	27-44-02-06
ECLASS 9.1	27-44-02-06	ECLASS 10.0	27-44-02-06
ECLASS 11.0	27-44-02-06	ECLASS 12.0	27-44-02-92

**Environmental Product Compliance**

REACH SVHC	Potassium perfluorobutane sulfonate 29420-49-3
SCIP	2f94735a-9fba-4903-842f-4fb9aa902310

**HDC-CR16-5B GR**

**Weidmüller Interface GmbH & Co. KG**  
Klingenbergstraße 26  
D-32758 Detmold  
Germany

[www.weidmueller.com](http://www.weidmueller.com)

**Technical data****Approvals**

Approvals



ROHS

Conform

**Downloads**

Engineering Data

[CAD data – STEP](#)

Catalogues

[Catalogues in PDF-format](#)

Brochures

[FL FIELDWIRING EN](#)

**HDC-CR16-5B GR**

**Weidmüller Interface GmbH & Co. KG**  
Klingenbergstraße 26  
D-32758 Detmold  
Germany

[www.weidmueller.com](http://www.weidmueller.com)

**Drawings**

