

DSTV HE BL10 S

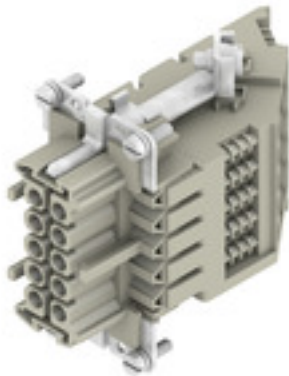
Weidmüller Interface GmbH & Co. KG

Klingenbergstraße 26

D-32758 Detmold

Germany

www.weidmueller.com



A heavy-duty connector consists of a connector insert and its protective housing. The insert is therefore the heart of the heavy-duty connector. It is responsible for electrical functioning. Connector inserts from Weidmüller are made from high-quality insulation materials, which allow secure transmission of high voltages in a tight space. Moreover, we use only a single type of plastic in our entire product line. This plastic is UL listed, and suitable for railway applications. This allows unlimited world-wide use of the RockStar® connector.

General ordering data

| | |
|------------|---|
| Version | HDC insert, Female, 500 V, 16 A, Number of poles: 10, Screw connection, Size: 4 |
| Order No. | 1848570000 |
| Type | DSTV HE BL10 S |
| GTIN (EAN) | 4032248371686 |
| Qty. | 10 Stück |

Erstellungs-Datum May 30, 2023 3:34:58 PM CEST

Katalogstand 26.05.2023 / Technische Änderungen vorbehalten

DSTV HE BL10 S

Weidmüller Interface GmbH & Co. KG

Klingenbergstraße 26

D-32758 Detmold

Germany

www.weidmueller.com

Technische Daten

Dimensions and weights

Net weight 131.4 g

Temperatures

Operating temperature, min. -40 °C Operating temperature, max. 120 °C

General data

| | | | |
|------------------------------|---|--------------------------------------|-------------|
| BG | 4 | Free from halogens | false |
| Insulating material | PC glass-fibre reinforced (UL-listed and railway-certified) | Insulating material group | IIIa |
| Insulation strength | 10 ¹⁰ Ω | Low smoke acc. DIN EN 45545-2 | Yes |
| Material | Copper alloy | Max. torque for main contact | 0.7 Nm |
| Min. torque for main contact | 0.5 Nm | Number of poles | 10 |
| Plugging cycles, silver | ≥ 200 | Pollution severity | 3 |
| Rated current (DIN EN 61984) | 16 A | Rated impulse voltage (DIN EN 61984) | 6 kV |
| Rated voltage (DIN EN 61984) | 500 V | Rated voltage according to UL/CSA | 600 V AC/DC |
| Series | DSTV-HE | Size | 4 |
| Surface finish | Silver passivated | Type | Female |
| UL 94 flammability rating | V-0 | Volume resistance | ≤3 mΩ |

Connection data PE

| | | | |
|---------------------------------------|-------------------|---------------------------------------|--------------|
| Blade size, crosshead | size PZ1 | Blade size, slotted (PE connection) | SD 0.8 x 4.0 |
| Connection type PE | Screw connection | Fixing screw | M 4 |
| Rated cross-section | 4 mm ² | Stripping length PE connection | 10 mm |
| Tightening torque, max. PE connection | 1.6 Nm | Tightening torque, min. PE connection | 1.2 Nm |
| Wire cross section, AWG (PE), max. | AWG 12 | Wire cross section, AWG (PE), min. | AWG 20 |

Version

| | | | |
|---|-------------------|---|---------------------|
| BG | 4 | Blade size | size PZ0 |
| Blade size, slotted (screw connection) | SD 0.6 x 3.5 | Clamping screw | M 3 |
| Conductor cross-section, max. | 4 mm ² | Conductor cross-section, min. | 0.5 mm ² |
| Material | Copper alloy | Max. torque for main contact | 0.7 Nm |
| Min. torque for main contact | 0.5 Nm | Size | 4 |
| Stripping length, rated connection | 12 mm | Surface finish | Silver passivated |
| Type of connection | Screw connection | Volume resistance | ≤3 mΩ |
| Wire connection cross section AWG, max. | AWG 12 | Wire connection cross section AWG, min. | AWG 20 |
| Wire connection cross section, finely stranded, max. | 4 mm ² | Wire connection cross section, finely stranded, min. | 0.5 mm ² |
| Wire connection cross-section, finely stranded with wire-end ferrules DIN 46228/4, max. | 4 mm ² | Wire connection cross-section, finely stranded with wire-end ferrules DIN 46228/4, min. | 0.5 mm ² |
| Wire cross-section, solid, max. | 4 mm ² | Wire cross-section, solid, min. | 0.5 mm ² |

Classifications

| | | | |
|-------------|-------------|-------------|-------------|
| ETIM 6.0 | EC002311 | ETIM 7.0 | EC002311 |
| ETIM 8.0 | EC002311 | ECLASS 9.0 | 27-44-02-03 |
| ECLASS 9.1 | 27-44-02-03 | ECLASS 10.0 | 27-44-02-03 |
| ECLASS 11.0 | 27-44-02-03 | ECLASS 12.0 | 27-44-02-03 |

Erstellungs-Datum May 30, 2023 3:34:58 PM CEST

Katalogstand 26.05.2023 / Technische Änderungen vorbehalten

DSTV HE BL10 S

Weidmüller Interface GmbH & Co. KG
Klingenbergstraße 26
D-32758 Detmold
Germany

www.weidmueller.com

Technische Daten

Environmental Product Compliance

| | |
|------------|--------------------------------------|
| REACH SVHC | Lead 7439-92-1 |
| SCIP | d0694b55-f1aa-4d24-a200-c532c6ffc384 |

Approvals

Approvals



| | |
|-----------------------|------------|
| ROHS | Conform |
| UL File Number Search | UL Website |
| Certificate No. (UR) | E92202 |

Downloads

| | |
|---|--|
| Approval/Certificate/Document of Conformity | Manufacturer's declaration |
| Engineering Data | CAD data – STEP |
| Catalogues | Catalogues in PDF-format |
| Brochures | FL FIELDWIRING EN |

DSTV HE BL10 S

Weidmüller Interface GmbH & Co. KG
Klingenbergstraße 26
D-32758 Detmold
Germany

www.weidmueller.com

Zeichnungen

