

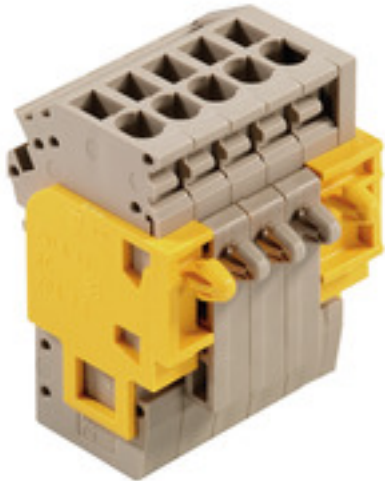
**ZPS 2.5/5 ZVLA DF CL****Weidmüller Interface GmbH & Co. KG**

Klingenbergstraße 26

D-32758 Detmold

Germany

www.weidmueller.com

**Product image**

A coupling offers the possibility to use the WeiCoS connector system without a base terminal block. The system can be used as a floating or permanently installed application for connecting two conductors.

**General ordering data**

Version	Z-series, Coupling, Rated cross-section: 2.5 mm <sup>2</sup> , Plug-in connection, beige, Direct mounting
Order No.	<a href="#">1887600000</a>
Type	ZPS 2.5/5 ZVLA DF CL
GTIN (EAN)	4032248493319
Qty.	10 pc(s).

Creation date March 3, 2023 11:04:08 AM CET

Catalogue status 18.02.2023 / We reserve the right to make technical changes.

## ZPS 2.5/5 ZVLA DF CL

**Weidmüller Interface GmbH & Co. KG**

Klingenbergstraße 26

D-32758 Detmold

Germany

www.weidmueller.com

## Technical data

### Dimensions and weights

Depth	42 mm	Depth (inches)	1.654 inch
Height	28.1 mm	Height (inches)	1.106 inch
Width	25.5 mm	Width (inches)	1.004 inch
Net weight	29.7 g		

### Temperatures

Storage temperature	-25 °C...55 °C	Continuous operating temp., min.	-50
Continuous operating temp., max.	120		

### Material data

Material	Wemid	Colour	dark beige
UL 94 flammability rating	V-0		

### System specifications

Version	Plug-in connector, Set of connectors, pluggable, Tension-clamp connection	End cover plate required	No
Number of levels	1	Number of clamping points per level	1
Levels cross-connected internally	No	PE connection	No

### Additional technical data

Explosion-tested version	No	Installation advice	Direct mounting
Type of mounting	Direct mounting		

### Conductors for clamping (rated connection)

Blade size	0.6 x 3.5 mm	Clamping range, max.	4 mm <sup>2</sup>
Clamping range, min.	0.13 mm <sup>2</sup>	Connection direction	top
Gauge to IEC 60947-1	A2	Number of connections	5
Stripping length	10 mm	Type of connection	Plug-in connection
Wire connection cross section AWG, max.	AWG 12	Wire connection cross section AWG, min.	AWG 26
Wire connection cross section, finely stranded, max.	4 mm <sup>2</sup>	Wire connection cross section, finely stranded, min.	0.5 mm <sup>2</sup>
Wire connection cross-section, finely stranded with wire-end ferrules DIN 46228/1, max.	2.5 mm <sup>2</sup>	Wire connection cross-section, finely stranded with wire-end ferrules DIN 46228/1, min.	0.5 mm <sup>2</sup>
Wire connection cross-section, solid core, max.	4 mm <sup>2</sup>	Wire connection cross-section, solid core, min.	0.5 mm <sup>2</sup>

### General

Installation advice	Direct mounting	Number of poles	5
Standards	IEC 60947-7-1, IEC 61984	Wire connection cross section AWG, max.	AWG 12
Wire connection cross section AWG, min.	AWG 26		

**ZPS 2.5/5 ZVLA DF CL****Weidmüller Interface GmbH & Co. KG**

Klingenbergstraße 26

D-32758 Detmold

Germany

www.weidmueller.com

**Technical data****Rating data**

Rated cross-section	2.5 mm <sup>2</sup>	Rated voltage	500 V
Rated current	24 A	Current at maximum wires	24 A
Standards	IEC 60947-7-1, IEC 61984	Volume resistance according to IEC 60947-7-x	1.33 mΩ
Rated impulse withstand voltage	6 kV	Power loss in accordance with IEC 60947-7-x	0.77 W
Pollution severity	3		

**Classifications**

ETIM 6.0	EC002848	ETIM 7.0	EC002848
ETIM 8.0	EC002848	ECLASS 9.0	27-14-11-92
ECLASS 9.1	27-14-11-92	ECLASS 10.0	27-14-11-92
ECLASS 11.0	27-14-11-92	ECLASS 12.0	27-14-11-92

**Approvals**

Approvals



ROHS

Conform

**Downloads**

Approval/Certificate/Document of Conformity	<a href="#">EAC certificate</a>
Engineering Data	<a href="#">CAD data – STEP</a>
Engineering Data	<a href="#">WSCAD</a>
User Documentation	<a href="#">StorageConditionsTerminalBlocks</a>
Catalogues	<a href="#">Catalogues in PDF-format</a>