

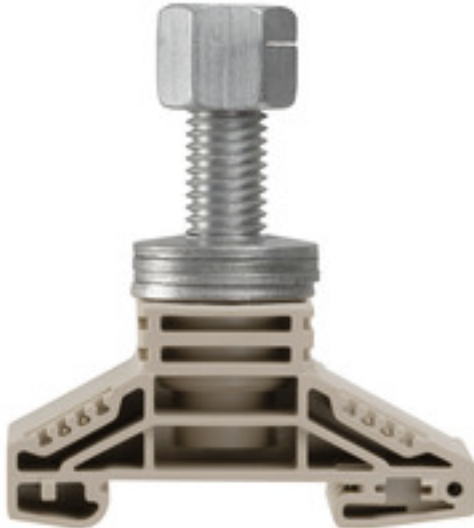
WF 12 NFF**Weidmüller Interface GmbH & Co. KG**

Klingenbergstraße 26

D-32758 Detmold

Germany

www.weidmueller.com

Product image

The comprehensive range of stud terminals ensures secure connections for all power transmission applications. Connections range from 10 mm² to 300 mm². The connectors are attached to the threaded pins using crimped cable lugs and each connection is secured by tightening the hexagon nut. Stud terminals with threaded pins from M5 to M16 can be used according to the wire cross-section.

General ordering data

Version	Bolt-type screw terminals, Feed-through terminal, Rated cross-section: 120 mm ² , Threaded stud connection, Direct mounting
Order No.	1968940000
Type	WF 12 NFF
GTIN (EAN)	4032248671489
Qty.	20 pc(s).

Creation date February 16, 2023 4:41:59 PM CET

Catalogue status 03.02.2023 / We reserve the right to make technical changes.

WF 12 NFF

Weidmüller Interface GmbH & Co. KG

Klingenbergstraße 26

D-32758 Detmold

Germany

www.weidmueller.com

Technical data

Dimensions and weights

Depth	70.5 mm	Depth (inches)	2.776 inch
Height	67 mm	Height (inches)	2.638 inch
Width	33.8 mm	Width (inches)	1.331 inch
Net weight	124.95 g		

Temperatures

Storage temperature	-25 °C...55 °C	Continuous operating temp., min.	-50 °C
Continuous operating temp., max.	120 °C		

Material data

Material	Wemid	Colour	dark beige
UL 94 flammability rating	V-0		

System specifications

Version	Single-stud terminals	End cover plate required	No
Number of levels	1	Number of clamping points per level	1
Levels cross-connected internally	No	PE connection	No
Rail	TS 35		

Additional technical data

Explosion-tested version	No	Installation advice	Direct mounting
Number of similar terminals	1	Open sides	Open
Type of mounting	Snap-on		

Conductors for clamping (rated connection)

2 x cable lugs DIN 46 234	6 to 120 mm ²	2 x cable lugs DIN 46 235	10...95 mm ²
Cable lug to DIN 46234	6...120 mm ²	Cable lug to DIN 46235	10...95 mm ²
Clamping range, max.	120 mm ²	Clamping range, min.	6 mm ²
Number of connections	1	Stud size for spade connection	M 12
Tightening torque, max.	60 Nm	Tightening torque, min.	50 Nm
Type of connection	Threaded stud connection		

Dimensions

TS 35 offset	31.5 mm
--------------	---------

General

Installation advice	Direct mounting	Rail	TS 35
---------------------	-----------------	------	-------

Rating data

Rated cross-section	120 mm ²	Rated voltage	1,000 V
Rated DC voltage	1,000 V DC	Voltage with epoxy resin partition plate	2,300 V
Rated current	269 A	Current at maximum wires	269 A
Volume resistance according to IEC 60947-7-x	0.12 mΩ	Rated impulse withstand voltage	8 kV
Impulse voltage with epoxy resin partition plate	12 kV	Power loss in accordance with IEC 60947-7-x	8.61 W
Pollution severity	3		

Creation date February 16, 2023 4:41:59 PM CET

WF 12 NFF

Weidmüller Interface GmbH & Co. KG
 Klingenbergstraße 26
 D-32758 Detmold
 Germany

www.weidmueller.com

Technical data

Classifications

ETIM 6.0	EC000897	ETIM 7.0	EC000897
ETIM 8.0	EC000897	ECLASS 9.0	27-14-11-20
ECLASS 9.1	27-14-11-20	ECLASS 10.0	27-14-11-20
ECLASS 11.0	27-14-11-20	ECLASS 12.0	27-14-11-20

Approvals

Approvals



ROHS Conform

Downloads

Approval/Certificate/Document of Conformity	EAC certificate CE Declaration of Conformity CE Declaration of Conformity all terminals UKCA declaration of conformity
Engineering Data	CAD data – STEP
Engineering Data	WSCAD
User Documentation	StorageConditionsTerminalBlocks
Catalogues	Catalogues in PDF-format
Brochures	

Data sheet

WF 12 NFF

Weidmüller Interface GmbH & Co. KG
Klingenbergstraße 26
D-32758 Detmold
Germany

www.weidmueller.com

Drawings

