

**WF 10 NFF****Weidmüller Interfaces GmbH & Co. KG**

Postfach 3030

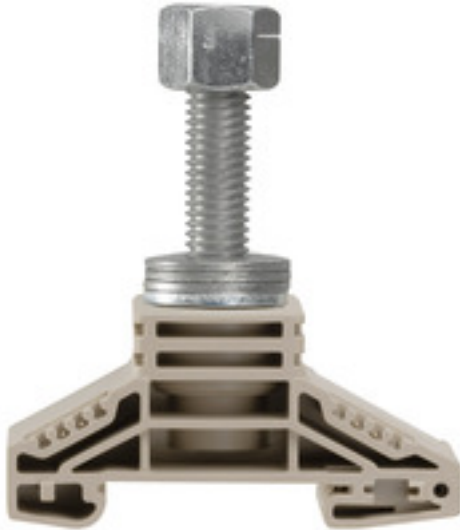
32760 Detmold

Tel. +49 5231 14-0

Fax. +49 5231 14-2083

info@weidmueller.com

www.weidmueller.com

**Product image**

The comprehensive range of stud terminals ensures secure connections for all power transmission applications. Connections range from 10 mm<sup>2</sup> to 300 mm<sup>2</sup>. The connectors are attached to the threaded pins using crimped cable lugs and each connection is secured by tightening the hexagon nut. Stud terminals with threaded pins from M5 to M16 can be used according to the wire cross-section.

**General ordering data**

Version	Bolt-type screw terminals, Feed-through terminal, Rated cross-section: 120 mm <sup>2</sup> , Threaded stud connection
Order No.	<a href="#">1968950000</a>
Type	WF 10 NFF
GTIN (EAN)	4032248702862
Qty.	20 pc(s).

## WF 10 NFF

Weidmüller Interfaces GmbH &amp; Co. KG

Postfach 3030

32760 Detmold

Tel. +49 5231 14-0

Fax. +49 5231 14-2083

info@weidmueller.com

www.weidmueller.com

## Technical data

## Dimensions and weights

Depth	72.5 mm	Depth (inches)	2.854 inch
Height	67 mm	Height (inches)	2.638 inch
Width	33.8 mm	Width (inches)	1.331 inch
Net weight	100.7 g		

## Temperatures

Storage temperature	-25 °C...55 °C	Continuous operating temp., min.	-50 °C
Continuous operating temp., max.	120 °C		

## Material data

Material	Wemid	Colour	dark beige
UL 94 flammability rating	V-0		

## System specifications

Version	Single-stud terminals	End cover plate required	No
Number of levels	1	Number of clamping points per level	1
Levels cross-connected internally	No	PE connection	No
Rail	TS 35		

## Additional technical data

Explosion-tested version	No	Number of similar terminals	1
Open sides	Open	Type of mounting	Snap-on

## Conductors for clamping (rated connection)

2 x cable lugs DIN 46 234	6 to 120 mm <sup>2</sup>	2 x cable lugs DIN 46 235	10...95 mm <sup>2</sup>
Cable lug to DIN 46234	6...120 mm <sup>2</sup>	Cable lug to DIN 46235	10...95 mm <sup>2</sup>
Clamping range, max.	120 mm <sup>2</sup>	Clamping range, min.	6 mm <sup>2</sup>
Number of connections	1	Stud size for spade connection	M 10
Tightening torque, max.	36 Nm	Tightening torque, min.	30 Nm
Type of connection	Threaded stud connection		

## Dimensions

TS 35 offset	31.5 mm
--------------	---------

## General

Rail	TS 35
------	-------

## Rating data

Rated cross-section	120 mm <sup>2</sup>	Rated voltage	1,000 V
Rated DC voltage	1,000 V DC	Voltage with epoxy resin partition plate	2,300 V
Rated current	269 A	Current at maximum wires	269 A
Volume resistance according to IEC 60947-7-x	0.12 mΩ	Rated impulse withstand voltage	8 kV
Impulse voltage with epoxy resin partition plate	12 kV	Power loss in accordance with IEC 60947-7-x	8.61 W
Pollution severity	3		

Creation date March 6, 2023 9:41:53 AM CET

Catalogue status 18.02.2023 / We reserve the right to make technical changes.

**WF 10 NFF**

**Weidmüller Interfaces GmbH & Co. KG**

Postfach 3030

32760 Detmold

Tel. +49 5231 14-0

Fax. +49 5231 14-2083

[info@weidmueller.com](mailto:info@weidmueller.com)

[www.weidmueller.com](http://www.weidmueller.com)

**Technical data**

**Classifications**

ETIM 6.0	EC000897	ETIM 7.0	EC000897
ETIM 8.0	EC000897	ECLASS 9.0	27-14-11-20
ECLASS 9.1	27-14-11-20	ECLASS 10.0	27-14-11-20
ECLASS 11.0	27-14-11-20	ECLASS 12.0	27-14-11-20

**Approvals**

Approvals



ROHS

Conform

**Downloads**

Approval/Certificate/Document of Conformity	<a href="#">EAC certificate</a> <a href="#">CE Declaration of Conformity</a> <a href="#">CE Declaration of Conformity all terminals</a> <a href="#">UKCA declaration of conformity</a>
Engineering Data	<a href="#">CAD data – STEP</a>
Engineering Data	<a href="#">WSCAD</a>
User Documentation	<a href="#">StorageConditionsTerminalBlocks</a>
Catalogues	<a href="#">Catalogues in PDF-format</a>
Brochures	

**Data sheet**

**WF 10 NFF**

**Weidmüller Interfaces GmbH & Co. KG**

Postfach 3030

32760 Detmold

Tel. +49 5231 14-0

Fax. +49 5231 14-2083

[info@weidmueller.com](mailto:info@weidmueller.com)

[www.weidmueller.com](http://www.weidmueller.com)

**Drawings**

