

**HDC CFM 16 5M****Weidmüller Interfaces GmbH & Co. KG**

Postfach 3030

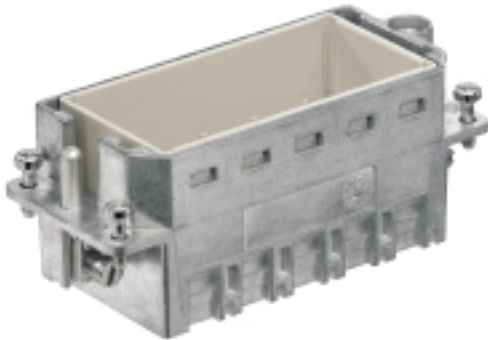
32760 Detmold

Tel. +49 5231 14-0

Fax. +49 5231 14-2083

info@weidmueller.com

www.weidmueller.com



The sturdy CR16 module frames are available in polycarbonate or die-cast zinc. The frames are designed so that 5 individual modules or corresponding double modules can be installed. The CR16 frames are designed to fit the size-6 housings.

**General ordering data**

Version	Heavy-duty connectors, HDC insert, ConCept frame
Order No.	<a href="#">1983870000</a>
Type	HDC CFM 16 5M
GTIN (EAN)	4032248689002
Qty.	1 pc(s).

**HDC CFM 16 5M**
**Weidmüller Interfaces GmbH & Co. KG**

Postfach 3030

32760 Detmold

Tel. +49 5231 14-0

Fax. +49 5231 14-2083

[info@weidmueller.com](mailto:info@weidmueller.com)
[www.weidmueller.com](http://www.weidmueller.com)
**Technical data**
**Dimensions and weights**

Depth	84.5 mm	Depth (inches)	3.327 inch
Height	35 mm	Height (inches)	1.378 inch
Width	34 mm	Width (inches)	1.339 inch
Net weight	103 g		

**Temperatures**

Limit temperature	-40 °C ... 125 °C
-------------------	-------------------

**ConCept Pneumatic module**

Colour	Silver grey
--------	-------------

**Dimensions**

Height of plug	35 mm	Total length base	84.5 mm
Width	34 mm		

**General data**

BG	6	Material	Diecast zinc
Series	ConCept frame	Size	6
Type	Pin		

**Connection data PE**

Connection type PE	Screw connection	Tightening torque, max. PE connection	1.5 Nm
Tightening torque, min. PE connection	0.5 Nm		

**Version**

BG	6	Material	Diecast zinc
Size	6		

**Classifications**

ETIM 6.0	EC000437	ETIM 7.0	EC000437
ETIM 8.0	EC000437	ECLASS 9.0	27-44-02-02
ECLASS 9.1	27-44-02-02	ECLASS 10.0	27-44-02-02
ECLASS 11.0	27-44-02-02	ECLASS 12.0	27-44-02-02

**Environmental Product Compliance**

REACH SVHC	Lead 7439-92-1 Potassium perfluorobutane sulfonate 29420-49-3
SCIP	e98b2b24-ba23-41bf-8d19-0dda3647412f

**Data sheet****HDC CFM 16 5M****Weidmüller Interfaces GmbH & Co. KG**

Postfach 3030

32760 Detmold

Tel. +49 5231 14-0

Fax. +49 5231 14-2083

[info@weidmueller.com](mailto:info@weidmueller.com)[www.weidmueller.com](http://www.weidmueller.com)**Technical data****Approvals**

Approvals



ROHS	Conform
UL File Number Search	UL Website
Certificate No. (cURus)	E92202

**Downloads**

Engineering Data	<a href="#">CAD data – STEP</a>
Engineering Data	<a href="#">WSCAD</a>
Catalogues	<a href="#">Catalogues in PDF-format</a>
Brochures	<a href="#">FL FIELDWIRING EN</a>