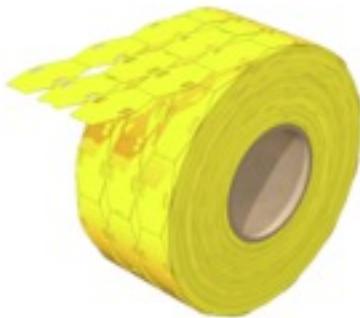


**SFX 9/24 MM GE**

**Weidmüller Interface GmbH & Co. KG**  
 Klingenbergstraße 26  
 D-32758 Detmold  
 Germany

www.weidmueller.com



**Highly flexible: SFX**

SFX markers are the preferred choice for labelling cables if you prefer the classic cable tie solution. Cables do not always run in a straight line. The material used in SFX markers addresses this fact with highly flexible polyurethane. The marker follows each curve of the cable and latches on with ease.

**General ordering data**

Version	SlimFix, Conductor and cable markers, 7 - , 26 x 15 mm, yellow
Order No.	<a href="#">2005380000</a>
Type	SFX 9/24 MM GE
GTIN (EAN)	4050118390308
Qty.	1,000 Stück
compatible printer	<a href="#">2599430000</a> <a href="#">2599440000</a>

Erstellungs-Datum May 22, 2023 1:19:07 PM CEST

## SFX 9/24 MM GE

**Weidmüller Interface GmbH & Co. KG**

Klingenbergstraße 26

D-32758 Detmold

Germany

www.weidmueller.com

## Technische Daten

### Dimensions and weights

Depth	0.6 mm	Depth (inches)	0.024 inch
Height	26 mm	Height (inches)	1.024 inch
Width	15 mm	Width (inches)	0.591 inch
Net weight	0.238 g		

### Temperatures

Operating temperature range	-40...90 °C
-----------------------------	-------------

### General data

Colour	yellow	Halogen	No
Material	Polyurethane	Number per roll	1,000
Operating temperature range	-40...90 °C	Operating temperature range, max.	90 °C
Operating temperature range, min.	-40 °C	Size of labelling field	23.5 x 9 mm
UL 94 flammability rating	HB	Version	halogen-free
Width	15 mm		

### Conductor and cable markers

Cable tie passage	Flat	Conductor O.D.	7 -
Conductor O.D., min.	7 mm	Halogen	No
Suitable cable tie	Plastic	Text field height	23.5 mm
Text field width	9 mm		

### Classifications

ETIM 6.0	EC001530	ETIM 7.0	EC001530
ETIM 8.0	EC001530	ECLASS 9.0	27-40-04-01
ECLASS 9.1	27-40-04-01	ECLASS 10.0	27-40-04-01
ECLASS 11.0	27-28-11-02	ECLASS 12.0	27-28-11-02

### Approvals

ROHS	Conform
------	---------

### Downloads

Engineering Data	<a href="#">CAD data – STEP</a>
Engineering Data	<a href="#">WSCAD, Zuken E3.S, EPLAN</a>
Catalogues	<a href="#">Catalogues in PDF-format</a>

**Datenblatt**

**SFX 9/24 MM GE**

**Weidmüller Interface GmbH & Co. KG**  
Klingenbergstraße 26  
D-32758 Detmold  
Germany

[www.weidmueller.com](http://www.weidmueller.com)

**Zeichnungen**

