

ACT20C-CML-10-AO-RC-S

Weidmüller Interfaces GmbH & Co. KG

Postfach 3030

32760 Detmold

Tel. +49 5231 14-0

Fax. +49 5231 14-2083

info@weidmueller.com

www.weidmueller.com

Product image



The ACT20C series was especially developed for applications with continuous processes. It enables the continuous monitoring of diagnostic, device and process information ("condition monitoring").

Several ACT20C components form a station which consists of an ACT20C Ethernet gateway, communicative ACT20C signal converters and an ACT20C bus termination terminal.

General ordering data

| | |
|------------|--|
| Version | Current-measuring transducer, Input : 0...5/10 A, Output : 0(4)-20 mA, 0-10 V, Relay |
| Order No. | 2044840000 |
| Type | ACT20C-CML-10-AO-RC-S |
| GTIN (EAN) | 4050118409826 |
| Qty. | 1 Stück |

ACT20C-CML-10-AO-RC-S

Weidmüller Interfaces GmbH & Co. KG

Postfach 3030

32760 Detmold

Tel. +49 5231 14-0

Fax. +49 5231 14-2083

info@weidmueller.com

www.weidmueller.com

Technische Daten

Dimensions and weights

| | | | |
|------------|----------|-----------------|------------|
| Depth | 113.6 mm | Depth (inches) | 4.472 inch |
| Height | 117.2 mm | Height (inches) | 4.614 inch |
| Width | 17.5 mm | Width (inches) | 0.689 inch |
| Net weight | 134 g | | |

Temperatures

| | | | |
|---------------------|----------------|----------|---------------------------|
| Storage temperature | -40 °C...85 °C | Humidity | 5...95 %, no condensation |
|---------------------|----------------|----------|---------------------------|

Probability of failure

| | | | |
|----------------------------------|------|------|-------|
| SIL in compliance with IEC 61508 | None | MTTF | 130 a |
|----------------------------------|------|------|-------|

Communication

| | | | |
|---------------|--|--|--|
| Configuration | for thresholds (overcurrent/ undercurrent), delay and hysteresis, via gateway (ACT20C-GTW-100-MTCP-S), With FDT/DTM software | | |
|---------------|--|--|--|

Input

| | | | |
|-----------------|---|-------------------------|---|
| Input frequency | AC: 15...400 Hz (true root mean square), AC: 50 Hz (arithmetic average) | Input measurement range | configurable, 0...1/5/10 A AC (RMS) or DC |
| Input signal | Power cable can be connected to the terminals | | |

Output

| | |
|------------------------|---------|
| Load impedance current | ≤ 600 Ω |
|------------------------|---------|

Output (digital)

| | | | |
|----------------------------|-------|----------------------------|---|
| Max. switching voltage, AC | 250 V | Max. switching voltage, DC | 24 V |
| Rated switching current | 2 A | Type | Relay, 1 CO contact, Process alarms (4x) with hysteresis, with alarm delay (configurable) 0...180 s |

Output (analogue)

| | | | |
|-------------------------|--|-------------------------|--|
| Load resistance current | ≤ 600 Ω | Load resistance voltage | ≥ 10 kΩ |
| Output current | Adjustable, 0...20 mA, 4...20 mA, -20...+20 mA | Output voltage | Adjustable, 0...10 V, 2...10 V, 0...5 V, 1...5 V, -5...+5 V, -10...+10 V |
| Type (analogue output) | Voltage and current output (configurable) | | |

alarm output

| | |
|-------------------|-----|
| Switching current | 5 A |
|-------------------|-----|

ACT20C-CML-10-AO-RC-S

Weidmüller Interfaces GmbH & Co. KG

Postfach 3030

32760 Detmold

Tel. +49 5231 14-0

Fax. +49 5231 14-2083

info@weidmueller.com

Technische Daten

General data

| | | |
|-------------------------|---|--|
| Accuracy | Configuration | www.weidmueller.com for thresholds (overcurrent/ undercurrent), delay and hysteresis, via gateway (ACT20C-GTW-100-MTCP-S), With FDT/DTM software |
| | | |
| | | |
| Galvanic isolation | 4-way isolator, between input/ output/ supply/ relay | Power consumption, max. |
| | | 2.2 W |
| Rail | TS 35 | Step response time |
| | | ≤ 300 ms (RMS), ≤ 60 ms (AA) |
| Temperature coefficient | ≤ ±100 ppm/K @ -25... +55 °C, ≤ ±200 ppm/K @ +55...+70 °C | Voltage supply |
| | | 24 V DC ± 30 % |

Insulation coordination

| | | | |
|---------------------------|------------------------------|------------------------|--|
| EMC standards | IEC 61326-1, IEC 61010-2-201 | Galvanic isolation | 4-way isolator, between input/ output/ supply/ relay |
| Impulse withstand voltage | 6 kV (1.2/50 μs) | Pollution severity | 2 |
| Rated voltage | 300 V AC _{rms} | Surge voltage category | III |
| Test voltage | 4 kV | | |

Connection data

| | | | |
|---|---------------------|---|---------------------|
| Type of connection | Screw connection | Tightening torque, min. | 0.5 Nm |
| Tightening torque, max. | 3.5 Lb In | Clamping range, rated connection | 1.5 mm ² |
| Clamping range, min. | 0.5 mm ² | Clamping range, max. | 2.5 mm ² |
| Wire connection cross section AWG, min. | AWG 30 | Wire connection cross section AWG, max. | AWG 14 |
| Wire cross-section, solid, min. | 0.5 mm ² | Wire cross-section, solid, max. | 2.5 mm ² |

Classifications

| | | | |
|-------------|-------------|-------------|-------------|
| ETIM 6.0 | EC002475 | ETIM 7.0 | EC002475 |
| ETIM 8.0 | EC002475 | ECLASS 9.0 | 27-21-01-23 |
| ECLASS 9.1 | 27-21-01-23 | ECLASS 10.0 | 27-21-01-23 |
| ECLASS 11.0 | 27-21-01-23 | ECLASS 12.0 | 27-21-01-23 |

Environmental Product Compliance

| | |
|------------|--------------------------------------|
| REACH SVHC | Lead 7439-92-1 |
| SCIP | 2f6dd957-421a-46db-a0c2-cf1609156924 |

Approvals

Approvals



| | |
|-------------------------|------------|
| ROHS | Conform |
| UL File Number Search | UL Website |
| Certificate no. (cULus) | E141197 |

Erstellungs-Datum May 30, 2023 5:32:13 PM CEST

Katalogstand 26.05.2023 / Technische Änderungen vorbehalten

ACT20C-CML-10-AO-RC-S

Weidmüller Interfaces GmbH & Co. KG

Postfach 3030

32760 Detmold

Tel. +49 5231 14-0

Fax. +49 5231 14-2083

info@weidmueller.com

www.weidmueller.com

Technische Daten

Downloads

Approval/Certificate/Document of Conformity

[Certification DNV GL](#)
[Certification UL](#)
[Declaration of Conformity](#)

Engineering Data
Software

[CAD data – STEP](#)
[Runtime Software – WI-Manager, DTM-Library for online installation](#)
[Release notes for Weidmueller FDT-DTM Software version](#)

User Documentation

[Instruction sheet](#)
[Manual](#)

Catalogues

[Catalogues in PDF-format](#)

ACT20C-CML-10-AO-RC-S

Weidmüller Interfaces GmbH & Co. KG

Postfach 3030

32760 Detmold

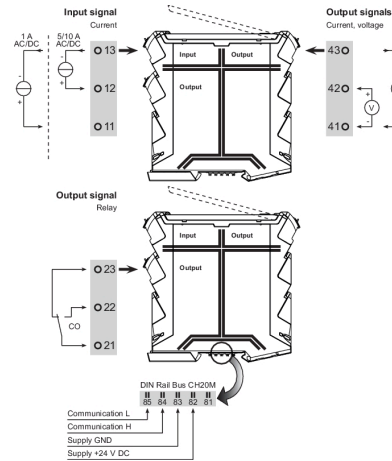
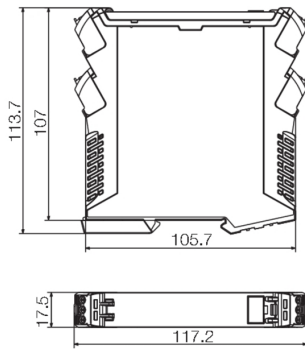
Tel. +49 5231 14-0

Fax. +49 5231 14-2083

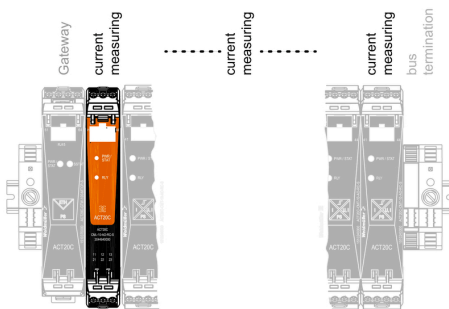
info@weidmueller.com

Zeichnungen

Dimensioned drawing



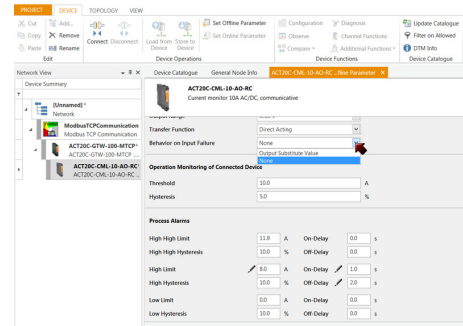
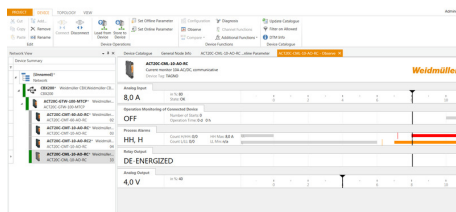
ACT20C-CML-10-AO-RC-S is part of the ACT20C-Station



Configuration

| User address | DIP switch S1 | | | | | |
|--------------|---------------|---|---|---|---|---|
| | 1 | 2 | 3 | 4 | 5 | 6 |
| 2 | | | | | | |
| 3 | | | | | | |
| 4 | | | | | | |
| 5 | | | | | | |
| 6 | | | | | | |
| 7 | | | | | | |
| 8 | | | | | | |
| ... | | | | | | |
| 16 | | | | | | |
| ... | | | | | | |
| 32 | | | | | | |
| 33 | | | | | | |

■ = ON



ACT20C-CML-10-AO-RC-S

Weidmüller Interfaces GmbH & Co. KG

Postfach 3030

32760 Detmold

Tel. +49 5231 14-0

Fax. +49 5231 14-2083

info@weidmueller.com

www.weidmueller.com

Zeichnungen

