

ACT20-FEED-IN-PRO-P

Weidmüller Interface GmbH & Co. KG
 Klingenbergstraße 26
 D-32758 Detmold
 Germany

www.weidmueller.com

Product image, Similar to illustration



Power supply adapter modules for separate supply and distribution of the supply voltage: for the ACT20 series/ MICROSERIES signal converters.

The 22.5/6.1 mm wide power-feed modules are mounted directly adjacent to the analogue signal converters. Then the 24 VDC supply voltage is optionally bridged via the CH20M (ACT20-series) rail bus or simply bridged over using the pluggable ZQV 4N (MICROSERIES) cross-connectors.

The ACT20-Feed-In-PRO-S can also detect faults coming from any of the devices mounted on the CH20 bus mounting profile.

In the event of an error or fault, the integrated status relay sends a common alarm to the external controller. In addition, two power supply units (as primary and backup supply) can be connected to the ACT20 Feed-In PRO-S.

Two feed-in modules mounted to the CH20 bus mounting profile guarantee a 100% redundant power supply.

Three LEDs are used to show the status of the power supply and error messages.

The ACT20M-Feed-In PRO can also be used in Ex zone2 / Division2 applications.

General ordering data

Version	Supply module, Distributes supply voltage to rail bus, Optional connection of backup supply
Order No.	2456870000
Type	ACT20-FEED-IN-PRO-P
GTIN (EAN)	4050118471809
Qty.	1 Stück

ACT20-FEED-IN-PRO-P

Weidmüller Interface GmbH & Co. KG
 Klingenbergstraße 26
 D-32758 Detmold
 Germany

www.weidmueller.com

Technische Daten

Dimensions and weights

Depth	113.6 mm	Depth (inches)	4.472 inch
Height	117.2 mm	Height (inches)	4.614 inch
Width	22.5 mm	Width (inches)	0.886 inch
Net weight	173 g		

Temperatures

Storage temperature	-20 °C...85 °C	Ambient temperature	-20...+60 °C
Humidity	40 °C / 95 % rel. humidity, no condensation		

Input

Backup power supply	21.6...26.4 V DC	Input current	max. 4 A
Input voltage	21.6...26.4 V DC	Number of inputs	2
Supply voltage (input)	21.6...26.4 V DC	Trigger level for the power supply	Fault < 21 V DC

Output

Number of outputs	1	Output current	max. 4 A, (Supply of e.g. 110 devices of ACT20M-CI-2CO-S on one CH20M BUS)
Output power	96 W	Output voltage, note	Input voltage -0.5 V DC / 4 A
Supply voltage (output)	24 V DC		

Output (digital)

AC power, max.	500 VA / 60 W	Alarm function	Device error, Failure of power supply, backup power supply
Continuous current	2 A	Max. switching voltage, AC	250 V
Type	Relay, 1 CO contact		

General data

Configuration	none	Degree of efficiency	0.976
Power consumption	< 2 W	Rail	TS 35, CH20M Bus
Voltage supply	21.6...26.4 V DC		

Insulation coordination

EMC standards	IEC 61326-1, NE 21
---------------	--------------------

ACT20-FEED-IN-PRO-P

Weidmüller Interface GmbH & Co. KG
 Klingenbergstraße 26
 D-32758 Detmold
 Germany

www.weidmueller.com

Technische Daten

Connection data

Type of connection	PUSH IN	Tightening torque, min.	0.4 Nm
Tightening torque, max.	0.6 Nm	Clamping range, rated connection	2.5 mm ²
Clamping range, min.	0.5 mm ²	Clamping range, max.	2.5 mm ²
Wire connection cross section AWG, min.	AWG 26	Wire connection cross section AWG, max.	AWG 14
Wire cross-section, solid, min.	0.2 mm ²	Wire cross-section, solid, max.	2.5 mm ²
Wire connection cross section, finely stranded, min.	0.2 mm ²	Wire connection cross section, finely stranded, max.	2.5 mm ²
Wire connection cross-section, finely stranded with wire-end ferrules DIN 46228/4, min.	0.2 mm ²	Wire connection cross-section, finely stranded with wire-end ferrules DIN 46228/4, max.	2.5 mm ²

Classifications

ETIM 6.0	EC001600	ETIM 7.0	EC001600
ETIM 8.0	EC001600	ECLASS 9.0	27-24-26-10
ECLASS 9.1	27-24-26-10	ECLASS 10.0	27-24-26-10
ECLASS 11.0	27-24-26-10	ECLASS 12.0	27-24-26-10

Environmental Product Compliance

REACH SVHC	Lead 7439-92-1
SCIP	2f6dd957-421a-46db-a0c2-cf1609156924

Approvals

Approvals



ROHS	Conform
UL File Number Search	UL Website
Certificate no. (cULus)	E337701

Downloads

Approval/Certificate/Document of Conformity	Certification ATEX Certification IECEx Certification UL Declaration of Conformity
Engineering Data	CAD data – STEP
Engineering Data	EPLAN
User Documentation	Instruction sheet
Catalogues	Catalogues in PDF-format

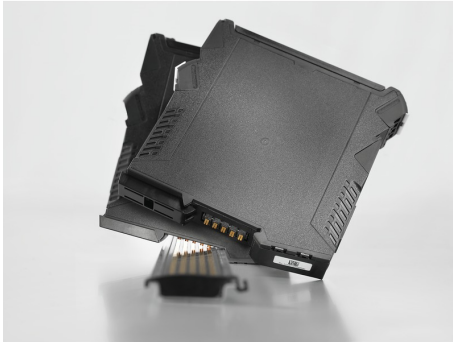
ACT20-FEED-IN-PRO-P

Weidmüller Interface GmbH & Co. KG
 Klingenbergstraße 26
 D-32758 Detmold
 Germany

www.weidmueller.com

Zeichnungen

Connection diagram



application example

Similar to illustration, Dimensioned drawing

