

**ES EPG 60/HPG WM 35**

**Weidmüller Interfaces GmbH & Co. KG**

Postfach 3030

32760 Detmold

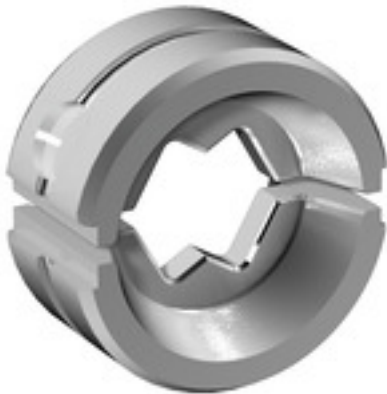
Tel. +49 5231 14-0

Fax. +49 5231 14-2083

info@weidmueller.com

www.weidmueller.com

**Similar to illustration**



**Crimping tools for cable lugs, connectors and wire-end ferrules with interchangeable inserts**

- extremely fast processing thanks to hydraulic support
- large processing range up to 300 mm<sup>2</sup>
- 270° revolving quick-action crimping head
- automatic pressure limitation and monitoring via pressure sensor
- electronic control and monitoring of the crimping process
- Saving of all crimping cycles and error messages to internal memory
- Reading of all cycles and error messages via USB
- Li-ion rechargeable battery with charge status indicator: 18 V, 1.5 Ah

**General ordering data**

|            |                                |
|------------|--------------------------------|
| Version    | Crimping tool insert, WM crimp |
| Order No.  | <a href="#">2469570000</a>     |
| Type       | ES EPG 60/HPG WM 35            |
| GTIN (EAN) | 4050118483826                  |
| Qty.       | 1 Stück                        |

## ES EPG 60/HPG WM 35

**Weidmüller Interfaces GmbH & Co. KG**

Postfach 3030

32760 Detmold

Tel. +49 5231 14-0

Fax. +49 5231 14-2083

[info@weidmueller.com](mailto:info@weidmueller.com)

[www.weidmueller.com](http://www.weidmueller.com)

## Technische Daten

### Dimensions and weights

|            |       |                 |            |
|------------|-------|-----------------|------------|
| Depth      | 22 mm | Depth (inches)  | 0.866 inch |
| Height     | 42 mm | Height (inches) | 1.654 inch |
| Width      | 42 mm | Width (inches)  | 1.654 inch |
| Net weight | 142 g |                 |            |

### Crimp inserts

|                            |    |                |      |
|----------------------------|----|----------------|------|
| Crimp cross-section copper | 35 | Crimping width | 5 mm |
| Crimping width in mm       | 5  |                |      |

### Description of contact

|                                   |   |                 |                       |
|-----------------------------------|---|-----------------|-----------------------|
| Conductor cross-section, max. AWG | 2 | Type of contact | Euro series cable lug |
|-----------------------------------|---|-----------------|-----------------------|

### tool data crimping

|                         |          |                    |
|-------------------------|----------|--------------------|
| Cable lug cross section | nominal  | 35 mm <sup>2</sup> |
| Crimping type/profile   | WM crimp |                    |

### Classifications

|             |             |             |             |
|-------------|-------------|-------------|-------------|
| ETIM 6.0    | EC001282    | ETIM 7.0    | EC001282    |
| ETIM 8.0    | EC001282    | ECLASS 9.0  | 21-04-90-90 |
| ECLASS 9.1  | 21-01-90-90 | ECLASS 10.0 | 21-04-90-90 |
| ECLASS 11.0 | 21-04-90-90 | ECLASS 12.0 | 21-04-90-90 |

### Downloads

|            |  |
|------------|--|
| Catalogues | <a href="#">Catalogues in PDF-format</a> |
|------------|--|