

ES EPG/HPG 60 WM 150

Weidmüller Interfaces GmbH & Co. KG

Postfach 3030

32760 Detmold

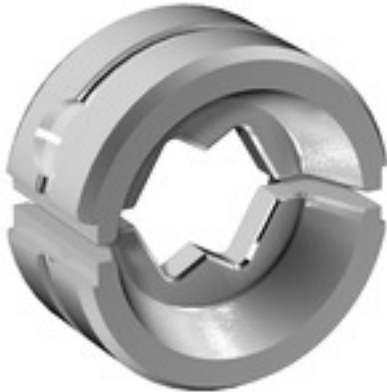
Tel. +49 5231 14-0

Fax. +49 5231 14-2083

info@weidmueller.com

www.weidmueller.com

Similar to illustration



Crimping tools for cable lugs, connectors and wire-end ferrules with interchangeable inserts

- extremely fast processing thanks to hydraulic support
- large processing range up to 300 mm²
- 270° revolving quick-action crimping head
- automatic pressure limitation and monitoring via pressure sensor
- electronic control and monitoring of the crimping process
- Saving of all crimping cycles and error messages to internal memory
- Reading of all cycles and error messages via USB
- Li-ion rechargeable battery with charge status indicator: 18 V, 1.5 Ah

General ordering data

Version	Crimping tool insert, WM crimp
Order No.	2469620000
Type	ES EPG/HPG 60 WM 150
GTIN (EAN)	4050118483871
Qty.	1 Stück

ES EPG/HPG 60 WM 150

Weidmüller Interfaces GmbH & Co. KG

Postfach 3030

32760 Detmold

Tel. +49 5231 14-0

Fax. +49 5231 14-2083

info@weidmueller.com

www.weidmueller.com

Technische Daten

Dimensions and weights

Depth	22 mm	Depth (inches)	0.866 inch
Height	42 mm	Height (inches)	1.654 inch
Width	42 mm	Width (inches)	1.654 inch
Net weight	134 g		

Crimp inserts

Crimp cross-section copper	150	Crimping width	5 mm
Crimping width in mm	5		

Description of contact

Conductor cross-section, max. AWG	5/0	Type of contact	Euro series cable lug
-----------------------------------	-----	-----------------	-----------------------

tool data crimping

Cable lug cross section	nominal	150 mm ²
Crimping type/profile	WM crimp	

Classifications

ETIM 6.0	EC001282	ETIM 7.0	EC001282
ETIM 8.0	EC001282	ECLASS 9.0	21-04-90-90
ECLASS 9.1	21-01-90-90	ECLASS 10.0	21-04-90-90
ECLASS 11.0	21-04-90-90	ECLASS 12.0	21-04-90-90

Downloads

Catalogues	Catalogues in PDF-format
------------	--