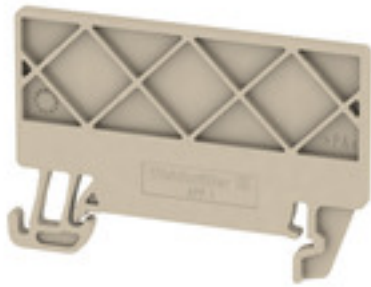


## APP 1

**Weidmüller Interface GmbH & Co. KG**  
Klingenbergstraße 26  
D-32758 Detmold  
Germany

[www.weidmueller.com](http://www.weidmueller.com)

## Product image



A partition plate is used for the optical separation of circuits or used for electrical isolation from neighbouring cross-connectors. In contrast to the end plate, the contour can be larger than the adjacent terminal blocks. However, it should not be smaller, as otherwise the required clearance and creepage distances within the application can no longer be maintained.

## General ordering data

Version	A-series, Partition plate
Order No.	<a href="#">2488970000</a>
Type	APP 1
GTIN (EAN)	4050118499216
Qty.	50 pc(s).

Creation date March 9, 2023 9:32:02 PM CET

Catalogue status 03.03.2023 / We reserve the right to make technical changes.

## APP 1

Weidmüller Interface GmbH &amp; Co. KG

Klingenbergstraße 26

D-32758 Detmold

Germany

www.weidmueller.com

## Technical data

## Dimensions and weights

Depth	36.15 mm	Depth (inches)	1.423 inch
Height	52.67 mm	Height (inches)	2.074 inch
Width	2.5 mm	Width (inches)	0.098 inch
Net weight	2.447 g		

## Temperatures

Storage temperature	-25 °C...55 °C	Continuous operating temp., min.	-60 °C
Continuous operating temp., max.	130 °C		

## Material data

Material	Wemid	Colour	dark beige
UL 94 flammability rating	V-0		

## Classifications

ETIM 6.0	EC000886	ETIM 7.0	EC000886
ETIM 8.0	EC000886	ECLASS 9.0	27-14-11-92
ECLASS 9.1	27-14-11-33	ECLASS 10.0	27-14-11-92
ECLASS 11.0	27-14-11-92	ECLASS 12.0	27-14-11-92

## Approvals

ROHS	Conform
------	---------

## Downloads

Engineering Data	<a href="#">CAD data – STEP</a>
User Documentation	<a href="#">ADDITIONAL_NOTE_DE</a> <a href="#">ADDITIONAL_NOTE_EN</a> <a href="#">StorageConditionsTerminalBlocks</a>
Catalogues	<a href="#">Catalogues in PDF-format</a>

**APP 1**

**Weidmüller Interface GmbH & Co. KG**  
Klingenbergstraße 26  
D-32758 Detmold  
Germany

[www.weidmueller.com](http://www.weidmueller.com)

**Drawings**

