

**ES EPG/HPG 60 HEX 185**

**Weidmüller Interfaces GmbH & Co. KG**

Postfach 3030

32760 Detmold

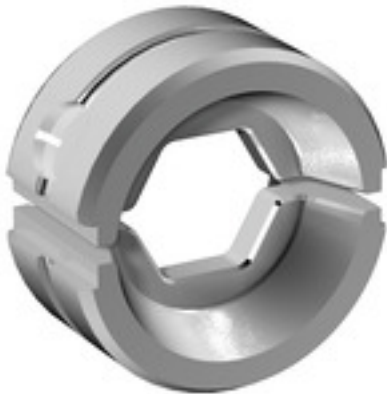
Tel. +49 5231 14-0

Fax. +49 5231 14-2083

info@weidmueller.com

www.weidmueller.com

**Similar to illustration**



**Crimping tools for cable lugs, connectors and wire-end ferrules with interchangeable inserts**

- extremely fast processing thanks to hydraulic support
- large processing range up to 300 mm<sup>2</sup>
- 270° revolving quick-action crimping head
- automatic pressure limitation and monitoring via pressure sensor
- electronic control and monitoring of the crimping process
- Saving of all crimping cycles and error messages to internal memory
- Reading of all cycles and error messages via USB
- Li-ion rechargeable battery with charge status indicator: 18 V, 1.5 Ah

**General ordering data**

Version	Crimping tool insert, Hexagonal crimp
Order No.	<a href="#">2505250000</a>
Type	ES EPG/HPG 60 HEX 185
GTIN (EAN)	4050118519617
Qty.	1 Stück

**ES EPG/HPG 60 HEX 185**

**Weidmüller Interfaces GmbH & Co. KG**

Postfach 3030

32760 Detmold

Tel. +49 5231 14-0

Fax. +49 5231 14-2083

[info@weidmueller.com](mailto:info@weidmueller.com)

[www.weidmueller.com](http://www.weidmueller.com)

**Technische Daten**

**Dimensions and weights**

Depth	22 mm	Depth (inches)	0.866 inch
Height	42 mm	Height (inches)	1.654 inch
Width	42 mm	Width (inches)	1.654 inch
Net weight	128 g		

**Crimp inserts**

Crimp cross-section aluminium	150	Crimp cross-section copper	185
Crimping width	5 mm	Crimping width in mm	5
Identification number	25		

**Description of contact**

Conductor cross-section, max. AWG	6/0	Type of contact	DIN 46235 cable lug, DIN 46267 Part 1 cable lug
-----------------------------------	-----	-----------------	---

**tool data crimping**

Cable lug cross section	nominal	185 mm <sup>2</sup>
Crimping type/profile	Hexagonal crimp	

**Classifications**

ETIM 6.0	EC001282	ETIM 7.0	EC001282
ETIM 8.0	EC001282	ECLASS 9.0	21-04-90-90
ECLASS 9.1	21-01-90-90	ECLASS 10.0	21-04-90-90
ECLASS 11.0	21-04-90-90	ECLASS 12.0	21-04-90-90

**Downloads**

Catalogues [Catalogues in PDF-format](#)