

**ES EPG 60/HPG DIN 25**

**Weidmüller Interfaces GmbH & Co. KG**

Postfach 3030

32760 Detmold

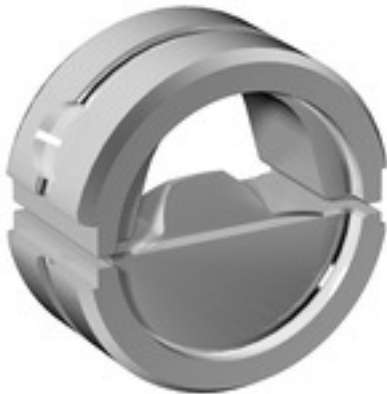
Tel. +49 5231 14-0

Fax. +49 5231 14-2083

info@weidmueller.com

www.weidmueller.com

**Similar to illustration**



**Crimping tools for cable lugs, connectors and wire-end ferrules with interchangeable inserts**

- extremely fast processing thanks to hydraulic support
- large processing range up to 300 mm<sup>2</sup>
- 270° revolving quick-action crimping head
- automatic pressure limitation and monitoring via pressure sensor
- electronic control and monitoring of the crimping process
- Saving of all crimping cycles and error messages to internal memory
- Reading of all cycles and error messages via USB
- Li-ion rechargeable battery with charge status indicator: 18 V, 1.5 Ah

**General ordering data**

Version	Crimping tool insert, Indent crimp
Order No.	<a href="#">2505310000</a>
Type	ES EPG 60/HPG DIN 25
GTIN (EAN)	4050118519693
Qty.	1 Stück

## ES EPG 60/HPG DIN 25

**Weidmüller Interfaces GmbH & Co. KG**

Postfach 3030

32760 Detmold

Tel. +49 5231 14-0

Fax. +49 5231 14-2083

[info@weidmueller.com](mailto:info@weidmueller.com)

[www.weidmueller.com](http://www.weidmueller.com)

## Technische Daten

### Dimensions and weights

Depth	22 mm	Depth (inches)	0.866 inch
Height	42 mm	Height (inches)	1.654 inch
Width	42 mm	Width (inches)	1.654 inch
Net weight	2 g		

### Crimp inserts

Crimp cross-section copper	25	Crimping width	10 mm
Crimping width in mm	10		

### Description of contact

Conductor cross-section, max. AWG	4	Type of contact	DIN 46234 cable lug, DIN 46341 Part 1 cable lug, DIN 46230 cable lug
-----------------------------------	---	-----------------	--

### tool data crimping

Cable lug cross section	nominal	25 mm <sup>2</sup>
Crimping type/profile	Indent crimp	

### Classifications

ETIM 6.0	EC001282	ETIM 7.0	EC001282
ETIM 8.0	EC001282	ECLASS 9.0	21-04-90-90
ECLASS 9.1	21-01-90-90	ECLASS 10.0	21-04-90-90
ECLASS 11.0	21-04-90-90	ECLASS 12.0	21-04-90-90

### Downloads

Catalogues [Catalogues in PDF-format](#)