

HDC MHP 200 FC**Weidmüller Interface GmbH & Co. KG**

Klingenbergstraße 26

D-32758 Detmold

Germany

www.weidmueller.com

**Flexible**

The four module sizes make for individual plug solutions that save a huge amount of space. The smaller pitch translates into an optimised design too.

General ordering data

Version	Power module
Order No.	2549260000
Type	HDC MHP 200 FC
GTIN (EAN)	4050118558685
Qty.	1 Stück

HDC MHP 200 FC

Weidmüller Interface GmbH & Co. KG

Klingenbergstraße 26

D-32758 Detmold

Germany

www.weidmueller.com

Technische Daten

Dimensions and weights

Depth	34 mm	Depth (inches)	1.339 inch
Height	59.6 mm	Height (inches)	2.346 inch
Width	21.85 mm	Width (inches)	0.86 inch
Net weight	12 g		

Temperatures

Limit temperature	-40 °C ... 125 °C
-------------------	-------------------

General data

Insulation strength	10 ¹² Ω	Material	Polycarbonate, glass fibre reinforced
Number of poles	1	Plugging cycles	≥ 500
Pollution severity	3	Rated current (DIN EN 61984)	200 A
Rated impulse voltage (DIN EN 61984)	8 kV	Rated voltage (DIN EN 61984)	1,000 V
Rated voltage according to UL/CSA	600 V	Required plug-in slots	1.5
Series	ModuPlug	Surge voltage category	III
Type	Female	UL 94 flammability rating	V-0

PE connection data

Connection type PE	Screw connection via module frame
--------------------	-----------------------------------

Version

Conductor cross-section, max.	70 mm ²	Conductor cross-section, min.	25 mm ²
Stripping length, rated connection	19 mm	Type of connection	Crimp connection

Classifications

ETIM 6.0	EC002312	ETIM 7.0	EC002312
ETIM 8.0	EC002312	ECLASS 9.0	27-44-02-92
ECLASS 9.1	27-44-02-18	ECLASS 10.0	27-44-02-92
ECLASS 11.0	27-44-02-92	ECLASS 12.0	27-44-02-92

Environmental Product Compliance

REACH SVHC	Potassium perfluorobutane sulfonate 29420-49-3
SCIP	1609748e-c278-4c9b-b3d1-e6215d2988cd

Approvals

Approvals



ROHS	Conform
UL File Number Search	UL Website
Certificate No. (cURus)	E92202

HDC MHP 200 FC

Weidmüller Interface GmbH & Co. KG
Klingenbergstraße 26
D-32758 Detmold
Germany

www.weidmueller.com

Technische Daten

Downloads

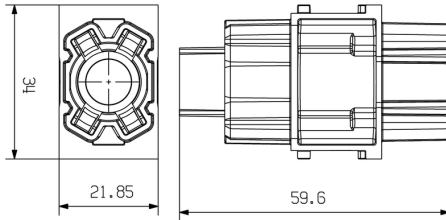
Approval/Certificate/Document of Conformity	Manufacturer's declaration
Engineering Data	CAD data – STEP
Engineering Data	EPLAN
Catalogues	Catalogues in PDF-format

HDC MHP 200 FC

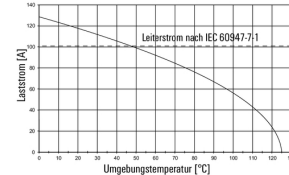
Weidmüller Interface GmbH & Co. KG
 Klingenbergstraße 26
 D-32758 Detmold
 Germany

www.weidmueller.com

Zeichnungen

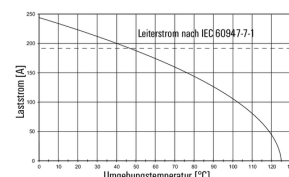


HP 200 mit H07V-K25 / IP65-Gehäuse / 4-polig



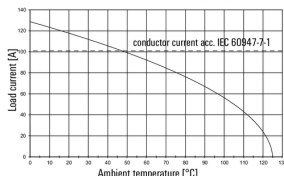
Derating-Kurve für kleinsten Querschnitt 25 mm²

HP 200 / IP65-Gehäuse / 4 Pole



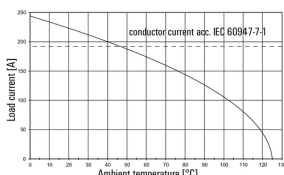
Derating-Kurve für kleinsten Querschnitt 70 mm²

HP 200 with H07V-K25 / IP65 housing / 4 poles



derating curve for smallest cross-section 25 mm²

HP 200 / IP65 housing / 4 poles



derating curve for the largest cross-section 70 mm²