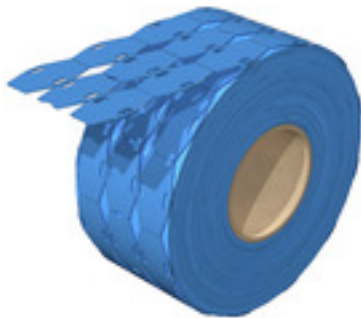


SFX-DT 9/24 MM BL

Weidmüller Interface GmbH & Co. KG
 Klingenbergstraße 26
 D-32758 Detmold
 Germany
 www.weidmueller.com



Highly flexible: SFX

SFX markers are the preferred choice for labelling cables if you prefer the classic cable tie solution. Cables do not always run in a straight line. The material used in SFX markers addresses this fact with highly flexible polyurethane. The marker follows each curve of the cable and latches on with ease.

General ordering data

Version	SlimFix, Conductor and cable markers, 7 - , 26 x 15 mm, blue
Order No.	2621490000
Type	SFX-DT 9/24 MM BL
GTIN (EAN)	4050118625554
Qty.	1,000 Stück
compatible printer	2599430000 2599440000

SFX-DT 9/24 MM BL

Weidmüller Interface GmbH & Co. KG
 Klingenbergstraße 26
 D-32758 Detmold
 Germany

www.weidmueller.com

Technische Daten

Dimensions and weights

Height	26 mm	Height (inches)	1.024 inch
Width	15 mm	Width (inches)	0.591 inch
Net weight	0.2 g		

Temperatures

Operating temperature range	-30...65 °C	Continuous operating temp., min.	-30
Continuous operating temp., max.	65		

General data

Colour	blue	Halogen	No
Material	Polyethylene	Operating temperature range	-30...65 °C
Operating temperature range, max.	65 °C	Operating temperature range, min.	-30 °C
Size of labelling field	23.5 x 9 mm	UL 94 flammability rating	HB
Version	halogen-free	Width	15 mm

Conductor and cable markers

Cable tie passage	Flat	Conductor O.D.	7 -
Conductor O.D., min.	7 mm	Halogen	No
Suitable cable tie	Plastic		

Classifications

ETIM 6.0	EC001530	ETIM 7.0	EC001530
ETIM 8.0	EC001530	ECLASS 9.0	27-40-04-01
ECLASS 9.1	27-40-04-01	ECLASS 10.0	27-40-04-01
ECLASS 11.0	27-28-11-02	ECLASS 12.0	27-28-11-02

Approvals

ROHS	Conform
------	---------

Downloads

Engineering Data	CAD data – STEP
Engineering Data	EPLAN
Catalogues	Catalogues in PDF-format

Datenblatt

SFX-DT 9/24 MM BL

Weidmüller Interface GmbH & Co. KG
Klingenbergstraße 26
D-32758 Detmold
Germany

www.weidmueller.com

Zeichnungen

