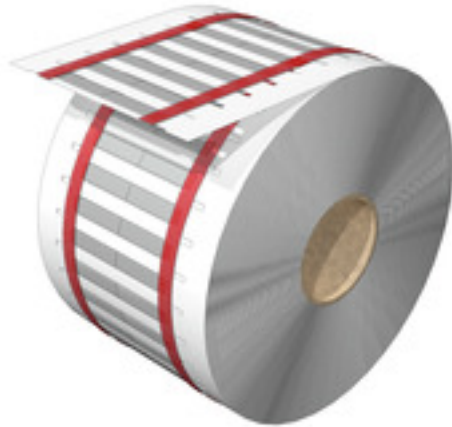


**HS-FR 1.6-3.2/25 MM W****Weidmüller Interface GmbH & Co. KG**

Klingenbergstraße 26

D-32758 Detmold

Germany

[www.weidmueller.com](http://www.weidmueller.com)

The heat-shrinkable sleeve is printable on 2 sides and can be used for marking and insulating cables and wires. The flexible, heat-shrink material enables a firm, perfect fit around the conductor and therefore saves space.

**General ordering data**

Version	Conductor and cable markers, 1.6 - 3.2 mm, 24.9 x 5.2 mm, white
Order No.	<a href="#">2621580000</a>
Type	HS-FR 1.6-3.2/25 MM W
GTIN (EAN)	4050118625462
Qty.	2,000 Stück
compatible printer	<a href="#">2599430000</a> <a href="#">2599440000</a>

Erstellungs-Datum May 26, 2023 9:06:11 AM CEST

Katalogstand 12.05.2023 / Technische Änderungen vorbehalten

## HS-FR 1.6-3.2/25 MM W

**Weidmüller Interface GmbH & Co. KG**  
 Klingenbergstraße 26  
 D-32758 Detmold  
 Germany

www.weidmueller.com

## Technische Daten

### Dimensions and weights

Depth	0.77 mm	Depth (inches)	0.03 inch
Height	24.9 mm	Height (inches)	0.98 inch
Width	5.2 mm	Width (inches)	0.205 inch
Net weight	0.271 g		

### Temperatures

Operating temperature range	-55...125 °C
-----------------------------	--------------

### General data

Colour	white	Halogen	No
Material	Polyolefine	Operating temperature range	-55...125 °C
Operating temperature range, max.	125 °C	Operating temperature range, min.	-55 °C
Size of labelling field	5.2 x 24.9 mm	Width	5.2 mm

### Conductor and cable markers

Conductor O.D.	1.6 - 3.2 mm	Conductor O.D., max.	3.2 mm
Conductor O.D., min.	1.6 mm	Conductor cross-section, max.	1.5 mm <sup>2</sup>
Conductor cross-section, min.	0.5 mm <sup>2</sup>	Cross-section for connected wire	0.5 - 1.5 mm <sup>2</sup>
Halogen	No	Rate of shrinkage	2:1
Recommended shrinking temperature	90 °C	Wire connection cross section AWG, max.	AWG 16
Wire connection cross section AWG, min.	AWG 20		

### Classifications

ETIM 6.0	EC001530	ETIM 7.0	EC001530
ETIM 8.0	EC001530	ECLASS 9.0	27-40-04-01
ECLASS 9.1	27-40-04-01	ECLASS 10.0	27-40-04-01
ECLASS 11.0	27-28-11-02	ECLASS 12.0	27-28-11-02

### Approvals

ROHS	Conform
------	---------

### Downloads

Engineering Data	<a href="#">EPLAN</a>
Catalogues	<a href="#">Catalogues in PDF-format</a>

**HS-FR 1.6-3.2/25 MM W**

**Weidmüller Interface GmbH & Co. KG**  
Klingenbergstraße 26  
D-32758 Detmold  
Germany

[www.weidmueller.com](http://www.weidmueller.com)

**Zeichnungen**

