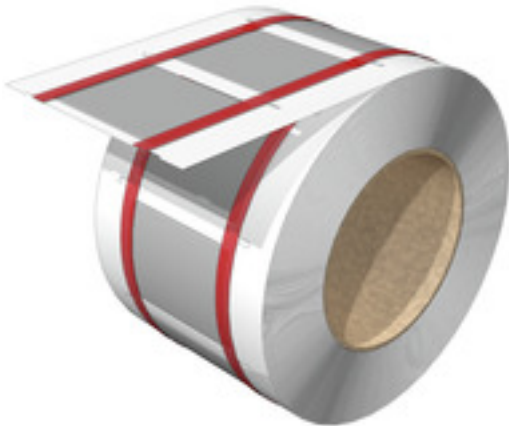


**HS-FR 12.7-25.4/50 MM W**

**Weidmüller Interface GmbH & Co. KG**  
Klingenbergstraße 26  
D-32758 Detmold  
Germany

[www.weidmueller.com](http://www.weidmueller.com)



The heat-shrinkable sleeve is printable on 2 sides and can be used for marking and insulating cables and wires. The flexible, heat-shrink material enables a firm, perfect fit around the conductor and therefore saves space.

**General ordering data**

|                    |  |
|--------------------|--|
| Version            | Conductor and cable markers, 12.7 - 25.4 mm, 49.8 x 40.5 mm, white |
| Order No.          | <a href="#">2621880000</a>   |
| Type               | HS-FR 12.7-25.4/50 MM W  |
| GTIN (EAN)         | 4050118625165  |
| Qty.               | 300 Stück  |
| compatible printer | <a href="#">2599430000</a> <a href="#">2599440000</a>              |

Erstellungs-Datum May 26, 2023 1:23:07 PM CEST

Katalogstand 12.05.2023 / Technische Änderungen vorbehalten

## HS-FR 12.7-25.4/50 MM W

**Weidmüller Interface GmbH & Co. KG**  
 Klingenbergstraße 26  
 D-32758 Detmold  
 Germany

www.weidmueller.com

## Technische Daten

### Dimensions and weights

|            |         |                 |            |
|------------|---------|-----------------|------------|
| Depth      | 0.77 mm | Depth (inches)  | 0.03 inch  |
| Height     | 49.8 mm | Height (inches) | 1.961 inch |
| Width      | 40.5 mm | Width (inches)  | 1.594 inch |
| Net weight | 1.6 g   |                 |            |

### Temperatures

|                             |              |
|-----------------------------|--------------|
| Operating temperature range | -55...125 °C |
|-----------------------------|--------------|

### General data

|                                   |                |                                   |              |
|-----------------------------------|----------------|-----------------------------------|--------------|
| Colour                            | white          | Halogen                           | No           |
| Material                          | Polyolefine    | Operating temperature range       | -55...125 °C |
| Operating temperature range, max. | 125 °C         | Operating temperature range, min. | -55 °C       |
| Size of labelling field           | 40.5 x 49.8 mm | Width                             | 40.5 mm      |

### Conductor and cable markers

|   |                    |   |                          |
|---|--------------------|---|--------------------------|
| Conductor O.D.                          | 12.7 - 25.4 mm     | Conductor O.D., max.                    | 25.4 mm                  |
| Conductor O.D., min.                    | 12.7 mm            | Conductor cross-section, max.           | 120 mm <sup>2</sup>      |
| Conductor cross-section, min.           | 35 mm <sup>2</sup> | Cross-section for connected wire        | 35 - 120 mm <sup>2</sup> |
| Halogen                                 | No                 | Rate of shrinkage                       | 2:1                      |
| Recommended shrinking temperature       | 90 °C              | Wire connection cross section AWG, max. | AWG 4/0                  |
| Wire connection cross section AWG, min. | AWG 2              |   |                          |

### Classifications

|             |             |             |             |
|-------------|-------------|-------------|-------------|
| ETIM 6.0    | EC001530    | ETIM 7.0    | EC001530    |
| ETIM 8.0    | EC001530    | ECLASS 9.0  | 27-40-04-01 |
| ECLASS 9.1  | 27-40-04-01 | ECLASS 10.0 | 27-40-04-01 |
| ECLASS 11.0 | 27-28-11-02 | ECLASS 12.0 | 27-28-11-02 |

### Approvals

|      |         |
|------|---------|
| ROHS | Conform |
|------|---------|

### Downloads

|                  |  |
|------------------|--|
| Engineering Data | <a href="#">EPLAN</a>                    |
| Catalogues       | <a href="#">Catalogues in PDF-format</a> |

**HS-FR 12.7-25.4/50 MM W**

**Weidmüller Interface GmbH & Co. KG**  
Klingenbergstraße 26  
D-32758 Detmold  
Germany

[www.weidmueller.com](http://www.weidmueller.com)

**Zeichnungen**

