

MOPL K71 STAHL

Weidmüller Interface GmbH & Co. KG

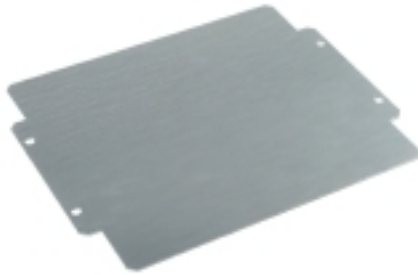
Klingenbergstraße 26

D-32758 Detmold

Germany

www.weidmueller.com

Similar to illustration



The system accessories for the Klippon® K enclosure series allows you to easily adapt the enclosures to meet the specific requirements of every application.

- DIN Rails TS 35 and TS15
- Mounting plates
- Hinges
- Wall-mounted holder

General ordering data

Version	Klippon K (aluminium empty enclosure), Mounting plate, Mounting plate, Height: 213 mm, Width: 264 mm, Depth: 2 mm, Material: Sheet steel, galvanized, galvanized, silver
Order No.	3073140000
Type	MOPL K71 STAHL
GTIN (EAN)	4008190858070
Qty.	1 Stück

Erstellungs-Datum June 1, 2023 10:44:39 AM CEST

Katalogstand 26.05.2023 / Technische Änderungen vorbehalten

MOPL K71 STAHL

Weidmüller Interface GmbH & Co. KG
 Klingenbergstraße 26
 D-32758 Detmold
 Germany

www.weidmueller.com

Technische Daten

Dimensions and weights

Depth	2 mm	Depth (inches)	0.079 inch
Height	213 mm	Height (inches)	8.386 inch
Width	264 mm	Width (inches)	10.394 inch
Mounting dimension - height	80 mm	Mounting dimension - width	250 mm
Net weight	789 g		

General information

Material	Sheet steel, galvanized	Material thickness	2 mm
Surface finish	galvanized	Type of fixing	when screwed in

General information on accessories

Material	Sheet steel, galvanized	Material thickness	2 mm
Mounting dimension - height	80 mm	Mounting dimension - width	250 mm
Surface finish	galvanized	Type of fixing	when screwed in

Classifications

ETIM 6.0	EC000213	ETIM 7.0	EC000213
ETIM 8.0	EC000213	ECLASS 9.0	27-40-06-39
ECLASS 9.1	27-18-92-90	ECLASS 10.0	27-40-06-39
ECLASS 11.0	27-40-06-39	ECLASS 12.0	27-40-06-39

Approvals

ROHS	Conform
------	---------

Downloads

Engineering Data	WSCAD, EPLAN
Catalogues	Catalogues in PDF-format
Brochures	