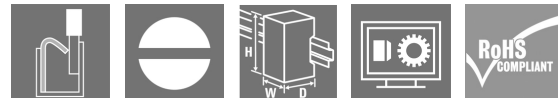


## SDI 1CO P

**Weidmüller Interface GmbH & Co. KG**  
 Klingenbergstraße 26  
 D-32758 Detmold  
 Germany

www.weidmueller.com

### Product image



Relay sockets for the D-SERIES DRI relays

- 1 and 2 CO contacts
- Screw and PUSH IN connection
- Standard and low heights

### General ordering data

|            |  |
|------------|--|
| Version    | D-SERIES DRI, Relay socket, Number of contacts: 1, CO contact, Continuous current: 12 A, PUSH IN |
| Order No.  | <a href="#">7760056364</a>   |
| Type       | SDI 1CO P  |
| GTIN (EAN) | 6944169772283  |
| Qty.       | 20 Stück   |

Erstellungs-Datum June 1, 2023 11:17:30 AM CEST

Katalogstand 26.05.2023 / Technische Änderungen vorbehalten

## SDI 1CO P

**Weidmüller Interface GmbH & Co. KG**

Klingenbergstraße 26

D-32758 Detmold

Germany

www.weidmueller.com

## Technische Daten

### Dimensions and weights

|            |          |                 |            |
|------------|----------|-----------------|------------|
| Depth      | 42.7 mm  | Depth (inches)  | 1.681 inch |
| Height     | 102.1 mm | Height (inches) | 4.02 inch  |
| Width      | 15.9 mm  | Width (inches)  | 0.626 inch |
| Net weight | 10.75 g  |                 |            |

### Temperatures

|                             |                           |                             |                |
|-----------------------------|---------------------------|-----------------------------|----------------|
| Storage temperature         | -40 °C...85 °C            | Operating temperature       | -40 °C...55 °C |
| Operating temperature, min. | -40 °C                    | Operating temperature, max. | 55 °C          |
| Humidity                    | 5...85 %, no condensation |                             |                |

### Rated data UL

|                         |         |
|-------------------------|---------|
| Certificate No. (cURus) | E312083 |
|-------------------------|---------|

### Load side

|                            |          |                    |              |
|----------------------------|----------|--------------------|--------------|
| Rated switching voltage    | 250 V AC | Continuous current | 12 A         |
| Max. switching voltage, AC | 250 V    | Contact type       | 1 CO contact |

### General data

|                                    |                          |                |  |
|------------------------------------|--------------------------|----------------|--|
| Rail                               | TS 35                    |                |  |
| Colour                             | black                    |                |  |
| UL94 flammability rating component | Component                | Housing        |  |
|                                    | UL94 flammability rating | V-2            |  |
|                                    | Component                | Pusher         |  |
|                                    | UL94 flammability rating | HB             |  |
|                                    | Component                | Mounting foot  |  |
|                                    | UL94 flammability rating | HB             |  |
|                                    | Component                | Retaining clip |  |
|                                    | UL94 flammability rating | HB             |  |

### Insulation coordination

|   |                    |  |                             |
|---|--------------------|--|-----------------------------|
| Rated voltage   | 300 V              | Pollution severity                               | 2                           |
| Surge voltage category  | III                | Insulating material group                        | IIIb                        |
| Clearance and creepage distances for control side - load side | ≥ 3 mm             | Dielectric strength for control side - load side | 5 kV <sub>eff</sub> / 1 min |
| Impulse withstand voltage at neighbouring contacts            | 4.8 kV (1.2/50 µs) | Protection degree                                | IP20                        |

### Further details of approvals / standards

|                         |         |
|-------------------------|---------|
| Certificate No. (cURus) | E312083 |
|-------------------------|---------|

## SDI 1CO P

**Weidmüller Interface GmbH & Co. KG**  
 Klingenbergstraße 26  
 D-32758 Detmold  
 Germany

www.weidmueller.com

## Technische Daten

### Connection data

|   |                     |   |                      |
|---|---------------------|---|----------------------|
| Wire connection method  | PUSH IN             | Stripping length, rated connection  | 10 mm                |
| Clamping range, rated connection  | 1.5 mm <sup>2</sup> | Clamping range, min.  | 0.14 mm <sup>2</sup> |
| Clamping range, max.  | 1.5 mm <sup>2</sup> | Wire connection cross section AWG, min.   | AWG 26               |
| Wire connection cross section AWG, max.   | AWG 16              | Wire cross-section, solid, min.   | 0.14 mm <sup>2</sup> |
| Wire cross-section, solid, max.   | 1.5 mm <sup>2</sup> | Wire connection cross section, finely stranded, min.                                    | 0.14 mm <sup>2</sup> |
| Wire connection cross section, finely stranded, max.                                    | 1.5 mm <sup>2</sup> | Wire connection cross-section, finely stranded with wire-end ferrules DIN 46228/4, min. | 0.14 mm <sup>2</sup> |
| Wire connection cross-section, finely stranded with wire-end ferrules DIN 46228/4, max. | 1 mm <sup>2</sup>   | Conductor cross-section, flexible, AEH (DIN 46228-1), min.                              | 0.14 mm <sup>2</sup> |
| Conductor cross-section, flexible, AEH (DIN 46228-1), max.                              | 1.5 mm <sup>2</sup> | Blade size  | 0.4 x 2.5 mm         |

### Classifications

|             |             |             |             |
|-------------|-------------|-------------|-------------|
| ETIM 6.0    | EC001456    | ETIM 7.0    | EC001456    |
| ETIM 8.0    | EC001456    | ECLASS 9.0  | 27-37-16-03 |
| ECLASS 9.1  | 27-37-16-03 | ECLASS 10.0 | 27-37-16-03 |
| ECLASS 11.0 | 27-37-16-03 | ECLASS 12.0 | 27-37-16-03 |

### Environmental Product Compliance

REACH SVHC Lead 7439-92-1

### Important note

Product information Only connection A2 with the cross-connection SCM/SDI P CC (art. no. 7760056366) can be bridged on this socket.

The protection module (RC filter) RIM 3 110/230VAC LED with order no. 7760056045 is not compatible with this socket.

### Approvals

Approvals



|                         |            |
|-------------------------|------------|
| ROHS                    | Conform    |
| UL File Number Search   | UL Website |
| Certificate No. (cURus) | E312083    |

### Downloads

|   |   |
|---|---|
| Approval/Certificate/Document of Conformity | <a href="#">EU Konformitätserklärung / EU Declaration of Conformity</a> |
| Engineering Data                            | <a href="#">CAD data – STEP</a>   |
| Engineering Data                            | <a href="#">EPLAN</a>   |
| Catalogues                                  | <a href="#">Catalogues in PDF-format</a>                                |

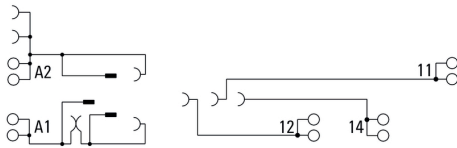
**SDI 1CO P**

**Weidmüller Interface GmbH & Co. KG**  
 Klingenbergstraße 26  
 D-32758 Detmold  
 Germany

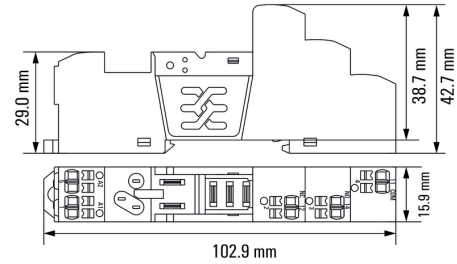
www.weidmueller.com

**Zeichnungen**

**Wiring diagram**



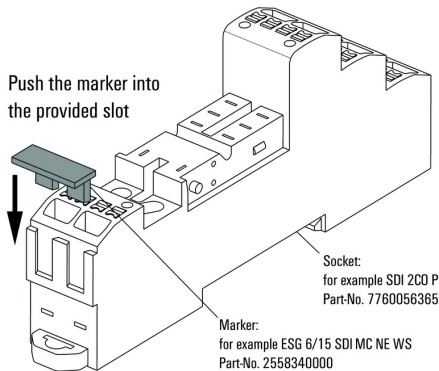
**Dimensional drawing**



**Example of use**

**How to install marker**

on PUSH IN connection sockets (one slot available)



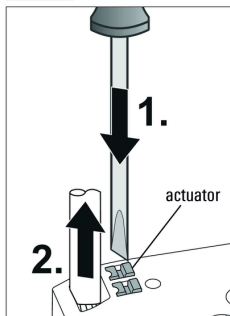
**How to install marker**

on PUSH IN connection sockets (one slot available)

**Miscellaneous**

**Removal of cables**

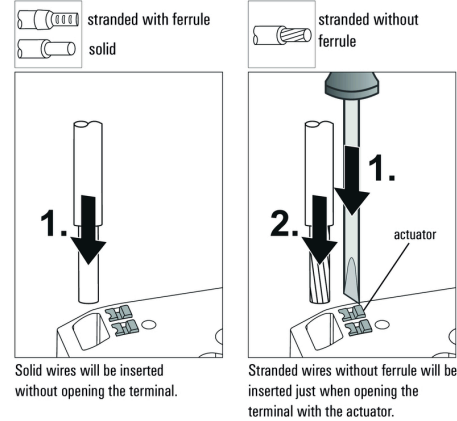
- stranded with ferrule
- stranded without ferrule
- solid



Wires will be disconnected just when opening the terminal with the actuator.

**Miscellaneous**

**Insert flexible and solid cables**



Solid wires will be inserted without opening the terminal.

Stranded wires without ferrule will be inserted just when opening the terminal with the actuator.

**Miscellaneous**

**Recommended screwdriver**

to push the actuator in PUSH IN

