

**IE-XM-RJ45/RJ45****Weidmüller Interface GmbH & Co. KG**

Klingenbergstraße 26

D-32758 Detmold

Germany

[www.weidmueller.com](http://www.weidmueller.com)

Mounting rail outlet, RJ45 junction design according to IEC 60603-7-51

**General ordering data**

Version	Mounting rail outlet, RJ45, RJ45-RJ45 coupler, IP20, Cat.6A / Class EA (ISO/IEC 11801 2010)
Order No.	<a href="#">8879050000</a>
Type	IE-XM-RJ45/RJ45
GTIN (EAN)	4032248614844
Qty.	1 Stück

Erstellungs-Datum May 22, 2023 4:19:51 PM CEST

Katalogstand 12.05.2023 / Technische Änderungen vorbehalten

## IE-XM-RJ45/RJ45

**Weidmüller Interface GmbH & Co. KG**  
 Klingenbergstraße 26  
 D-32758 Detmold  
 Germany

www.weidmueller.com

## Technische Daten

### Dimensions and weights

Net weight 49 g

### Temperatures

Operating temperature	-25 °C...70 °C	Operating temperature, min.	-25 °C
Operating temperature, max.	70 °C		

### General data

Connection 1	RJ45	Connection 2	RJ45
Description of article		Configuration	1 TE pitch dimension acc. to DIN 43880. insta-compatible Installation flange with mounting frame
Wiring	RJ45-RJ45 coupler Colour-coded pin assignment acc. to EIA/TIA T568 A (copper)	Colour	Light Grey
Housing main material	PA 66, UL 94: V-0	Category	Cat.6A / Class EA (ISO/IEC 11801 2010)
Type of mounting	TS 35	Shielding	360°; shield contact
Protection degree	IP20	Plugging cycles	750

### Electrical properties

Contact resistance	≤ 20 mΩ	Current-carrying capacity at 50 °C	1 A
Dielectric strength, contact / contact	≥ 1000 V DC	Dielectric strength, contact / shield	≥ 1500 V DC
Insulation strength	500 MΩ	PoE / PoE+	conforming to IEEE 802.3at

### General standards

Certificate no. (cULus)	E316369	Connector standard	IEC 60603-7-5
-------------------------	---------	--------------------	---------------

### Classifications

ETIM 6.0	EC001121	ETIM 7.0	EC001121
ETIM 8.0	EC001121	ECLASS 9.0	27-44-03-90
ECLASS 9.1	27-44-03-90	ECLASS 10.0	27-44-03-90
ECLASS 11.0	27-44-03-90	ECLASS 12.0	27-44-03-90

### Approvals

Approvals



ROHS	Conform
UL File Number Search	UL Website
Certificate no. (cULus)	E316369

## IE-XM-RJ45/RJ45

**Weidmüller Interface GmbH & Co. KG**  
Klingenbergstraße 26  
D-32758 Detmold  
Germany

[www.weidmueller.com](http://www.weidmueller.com)

## Technische Daten

### Downloads

Approval/Certificate/Document of Conformity	<a href="#">GOST Approval</a> <a href="#">DUXR.E316369</a> <a href="#">PROFINET Manufacturer's Declaration</a>
Engineering Data	<a href="#">CAD data – STEP</a>
Engineering Data	<a href="#">WSCAD, Zuken E3.S, EPLAN</a>
User Documentation	<a href="#">MAN IE GUIDE DE</a> <a href="#">MAN IE GUIDE EN</a> <a href="#">Manual</a>
Catalogues	<a href="#">Catalogues in PDF-format</a>
Brochures	<a href="#">FL FIELDWIRING EN</a> <a href="#">PI PROFINET CABLING EN</a> <a href="#">PI PROFINET CABLING EN</a>

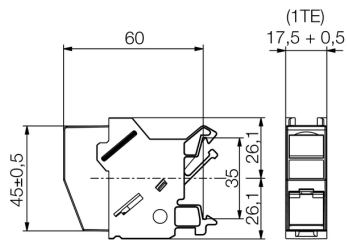
## IE-XM-RJ45/RJ45

**Weidmüller Interface GmbH & Co. KG**  
Klingenbergstraße 26  
D-32758 Detmold  
Germany

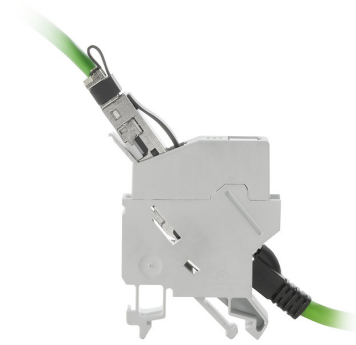
[www.weidmueller.com](http://www.weidmueller.com)

## Zeichnungen

### Dimensioned drawing



### Product image



### Product image

