

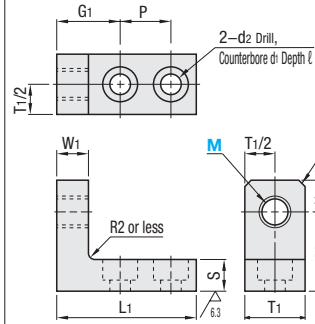
# Locating Screw Stopper Blocks

CAD Data

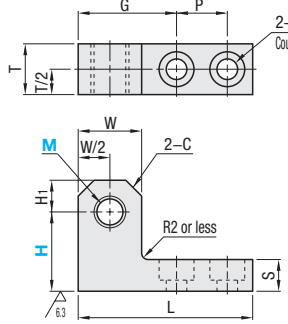


Type		Material	Surface Treatment
Lengthways Adjustable Type	Widthways Adjustable Type		
Coarse	Fine	Coarse	Fine
<a href="#">AJLTT</a>	<a href="#">AJLSTT</a>	<a href="#">AJLCTY</a>	<a href="#">AJLCSY</a>
<a href="#">AJLTTM</a>	<a href="#">AJLSTTM</a>	<a href="#">AJLCTYM</a>	<a href="#">AJLCSYM</a>
<a href="#">AJLTTNS</a>	<a href="#">AJLSTTNS</a>	<a href="#">AJLCTYNS</a>	<a href="#">AJLCSYNS</a>
		Bottom Mounting Type*	
<a href="#">AJLNN</a>	<a href="#">AJLNS</a>	<a href="#">AJLNM</a>	<a href="#">AJLNSM</a>
<a href="#">AJLTTSS</a>	<a href="#">AJLSTTSS</a>	<a href="#">AJLCTYSS</a>	<a href="#">AJLCSYSS</a>
		Material	Surface Treatment
		*1.1191/C45E	Black Oxide
		1.4301/X5CrNi18-10	Electroless Nickel Plating
		*1.0040/Ust.42.2 for Bottom Mounting Type	

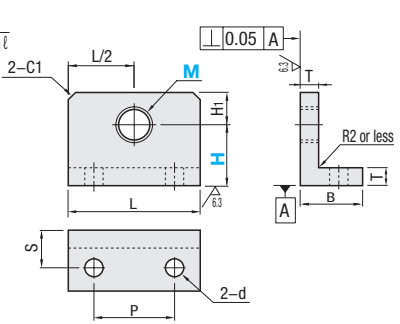
Lengthways Adjustable Type



Widthways Adjustable Type



Bottom Mounting Type



### Lengthways Adjustable Type

Part Number	Type	M	H Selection	H <sub>1</sub>	T <sub>1</sub>	MxPitch		W <sub>1</sub>	L <sub>1</sub>	P	S	d <sub>1</sub>	d <sub>2</sub>	l	G <sub>1</sub>	Unit Price Qty. 1-4		
						Coarse	Fine									AJLTT	AJLSTT	AJLTTM
(Coarse) AJLTT AJLTTM AJLTTNS AJLTTSS	(Fine) AJLSTT AJLSTTM	3	15 20	4	9	3x0.5	3x0.35	5	25	10	6	6.5	3.5	3.5	10	15.60	16.40	26.80
		4	15 20	6	12	4x0.7	4x0.5	8	32	10	8	8	4.5	4.5	15	15.60	16.40	26.80
		5	15 20	10	22	5x0.8	5x0.5	10	44	16	10	11	6.5	6.5	20	15.60	16.40	26.80
		6	15 20	15	30	6x1.0	6x0.75	15	65	30	15	14	9	9	25	15.60	16.40	26.80
		8	20 25 30	10	22	8x1.25	8x0.75	10	44	16	10	11	6.5	6.5	20	23.10	24.30	41.30
		10	20 25 30	15	30	10x1.5	10x1.0	15	65	30	15	14	9	9	25	23.10	24.30	41.30
		12	20 25 30	20	40	12x1.75	12x1.0	20	90	40	20	18	11	11	30	23.10	24.30	41.30
		16	35 40	15	30	16x2.0	16x1.5	15	65	30	15	14	9	9	25	36.20	38.00	66.80
		20		20	40	20x2.5	20x1.5	20	90	40	20	18	11	11	30	36.20	38.00	66.80

### Widthways Adjustable Type

Part Number	Type	M	H Selection	H <sub>1</sub>	T	MxPitch		L	W	P	S	d <sub>1</sub>	d <sub>2</sub>	l	C	G	Unit Price Qty. 1-4		
						Coarse	Fine										AJLCTY	AJLCSY	AJLCTYM
(Coarse) AJLCTY AJLCTYM AJLCTYNS AJLCTYSS	(Fine) AJLCSY AJLCSYM	3	10 15	4	9	3x0.5	3x0.35	28	8	10	6	6.5	3.5	3.5	2	13	15.20	16.00	24.40
		4	15 20	6	10	4x0.7	4x0.5	32	10	10	8	8	4.5	4.5	2	17	15.20	16.00	24.40
		5	15 20	10	16	5x0.8	5x0.5	44	16	16	10	11	6.5	6.5	5	31	15.20	16.00	24.40
		6	20 25 30	10	16	6x1.0	6x0.75	55	20	16	10	11	6.5	6.5	5	31	15.20	16.00	24.40
		8	25 30 40	15	19	8x1.25	8x0.75	68	25	19	14	14	9	9	7	45	23.00	24.00	40.50
		10	20 25 30	20	25	10x1.5	10x1.0	82	30	25	19	17	11	11	9	45	23.00	24.00	40.50
		12	25 30 40	25	35	12x1.75	12x1.0	98	35	30	25	19	11	11	9	45	23.00	24.00	40.50
		16	30 35 40	30	45	16x2.0	16x1.5	118	40	35	25	19	11	11	9	45	32.20	33.70	59.30
		20	35 40	40	55	20x2.5	20x1.5	142	45	45	25	19	11	11	9	45	32.20	33.70	59.30

### Bottom Mounting Type

Part Number	Type	M	H Selection	H <sub>1</sub>	T	MxPitch		L	B	P	S	d	Unit Price Qty. 1-4			
						Coarse	Fine						AJLNN	AJLNS	AJLNM	AJLNSM
AJLNN AJLNS AJLNM AJLNSM AJLNSNS AJLNSSS		3	15 20	10	6	3x0.5	3x0.35	13	10	14	12	4.5	14.00	14.00	39.80	
		4	15 20	15	10	4x0.7	4x0.5	16	13	17	15	6.5	14.00	14.00	39.80	
		5	15 20 25	20	15	5x0.8	5x0.5	19	16	20	18	9	6.5	14.00	14.00	39.80
		6	15 20 25 30	25	20	6x1.0	6x0.75	22	19	23	21	11	6.5	14.00	14.70	42.00
		8	25 30 40	30	25	8x1.25	8x0.75	27	24	28	26	13	6.5	18.70	19.40	68.00
		10	25 30 40	35	30	10x1.5	10x1.0	32	29	34	31	15	6.5	18.70	19.40	68.00
		12	25 30 40	40	35	12x1.75	12x1.0	37	34	39	36	17	6.5	18.70	19.40	68.00
		16	30 40 50	45	45	16x2.0	16x1.5	44	40	46	43	19	6.5	38.40	39.10	-
		20	30 40 50	55	55	20x2.5	20x1.5	52	48	54	51	21	6.5	38.40	39.10	-

\*T dimension of AJLNS and AJLSS (Material: Stainless Steel) is shown in ( ). M16 and 20 is not available.

Order Example Part Number: **AJLTT5** - **H 15**
Days to Ship **8 Days**
Express A **3,00 EUR/piece**
P.92

\*An Express Charge of 8,10 EUR for 3 or more identical pieces.

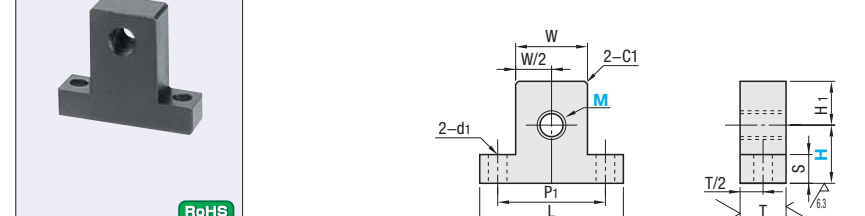
**Price** ■ Volume Discount P.92

Quantity	1-4	5-9	10-19	20-49
Rate	Price List	5%	10%	15%

For orders larger than indicated values, please request for quotation.  
For Lengthways Adjustable Type and Widthways Adjustable Type, please request a quotation for orders over 20 pcs.

### T-Shaped Type

Type		Material	Surface Treatment
Coarse	Fine		
<a href="#">AJTN</a>	<a href="#">AJTS</a>	1.0040/Ust.42.2	Black Oxide
<a href="#">AJTNM</a>	<a href="#">AJTSM</a>		Electroless Nickel Plating
<a href="#">AJTNS</a>	<a href="#">AJTSS</a>	1.4301/X5CrNi18-10	-



Part Number	Type	M	H Selection	H <sub>1</sub>	T	MxPitch		L	W	P <sub>1</sub>	S	d <sub>1</sub>	Unit Price Qty. 1-4		
						Coarse	Fine						AJTN	AJTNM	AJTNS
AJTN AJTNM AJTNS AJTSM AJTSS		3	15 20	10	10	3x0.5	3x0.35	32	16	24	5	4.5	12,80	13,30	25,60
		4	15 20	15	15	4x0.7	4x0.5	32	16	24	5	4.5	12,80	13,30	25,60
		5	15 20	20	20	5x0.8	5x0.5	32	16	24	5	4.5	12,80	13,30	25,60
		6	20 25 30	20	25	6x1.0	6x0.75	32	16	24	5	4.5	15,20	15,70	30,40
		8	20 25 30	25	30	8x1.25	8x0.75	32	16	24	5	4.5	17,10	17,60	34,20
		10	20 25 30	30	35	10x1.5	10x1.0	32	16	24	5	4.5	17,10	17,60	34,20
		12	20 25 30	40	45	12x1.75	12x1.0	32	16	24	5	4.5	17,10	17,60	34,20
		16	25 30 40	40	50	16x2.0	16x1.5	40	25	38	10	6.5	24,30	26,20	48,60
		20	25 30 40	55	60	20x2.5	20x1.5	50	40	57	15	9	24,30	26,20	48,60

### T-Shaped Slit Type

Type		Material	Surface Treatment
Coarse	Fine		
<a href="#">AJTWN</a>	<a href="#">AJTWS</a>	1.0040/	Black Oxide
<a href="#">AJTWNM</a>	<a href="#">AJTWSM</a>	Ust.42.2	Electroless Nickel Plating

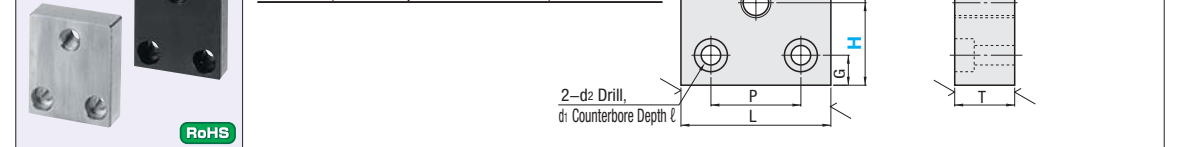
T-Shaped Slit Type can fix adjusting screws without using nuts.



Part Number	Type	M	H Selection	H <sub>2</sub>	T	MxPitch		L <sub>2</sub>	W <sub>2</sub>	P <sub>2</sub>	S	d	E	F	G	Unit Price Qty. 1-4	
						Coarse	Fine									AJTWN	AJTWS
AJTWN AJTWS AJTWNM AJTWSM		5	15 20	3.5	10	5x0.8	5x0.5	32	16	24	5	4.5	5	1	1	28,80	29,50
		6	20 25 30	4	10	6x1.0	6x0.75	34	18	26	5	4.5	6	1	1	33,70	34,50
		8	20 25 30	5.5	16	8x1.25	8x0.75	50	25	38	10	6.5	9	2	1	34,00	35,00
		10	20 25 30	6.5	16	10x1.5	10x1.0	50	25	38	10	6.5	9	2	3.3	34,00	35,00
		12	20 25 30	7.5	16	12x1.75	12x1.0	50	25	38	10	6.5	9	2	3.3	34,00	35,00

### Side Counterbore Type

Type		Material	Surface Treatment
Coarse	Fine		
<a href="#">AJFN</a>	<a href="#">AJFS</a>	1.0040/Ust.42.2	Black Oxide
<a href="#">AJFNM</a>	<a href="#">AJFSM</a>		Electroless Nickel Plating
<a href="#">AJFNS</a>	<a href="#">AJFSS</a>	1.4301/X5CrNi18-10	-



Part Number	Type	M	H Selection	H <sub>1</sub>	T	MxPitch		L	P	d <sub>1</sub>	d <sub>2</sub>	l	G	Unit Price Qty. 1-4		
						Coarse	Fine							AJFN	AJFNM	AJFNS
AJFN AJFS AJFNM AJFSM AJFNS AJFSS		3	20 25	10	10	3x0.5	3x0.35	32	20	8	4.5	4.5	5	6,70	7,10	13,60
		4	20 25	15	15	4x0.7	4x0.5	32	20	8	4.5	4.5	5	6,70	7,10	13,60
		5	20 25	20	20	5x0.8	5x0.5	32	20	8	4.5	4.5	5	6,70	7,10	13,60
		6	20 25 35	25	25	6x1.0	6x0.75	32	20	8	4.5	4.5	5	7,40	7,80	15,00
		8	35 40 50	30	30	8x1.25	8x0.75	32	20	8	4.5	4.5	5	8,60	9,10	17,40
		10	35 40 50	35	35	10x1.5	10x1.0	44 (50)	28	11	6.5	6.5	9	8,60	9,10	17,40
		12	35 40 50	40	40	12x1.75	12x									