



# Floating Joints

-Mount Flange, Cylinder Connector (Female Thread) Sets Standard Type/Space Saving Type-



Shape	Type			Mounting Flange			Cylinder Connector		
	Standard	Separate	Compact	□	□	□	□	□	□
Standard	FJA	FJB	FJC	1.1191/C45E	50-55HRC	Black Oxide	1.1191/C45E	□ Section 45-50HRC Surface Induction Hardening	□
	FJAS	FJBS	FJCS	1.4125/X105CrMo17*		—	1.4125/X105CrMo17*		
Space Saving	FJUA	FJUB	FJUC	1.1191/C45E	1.4031/X38Cr13	Black Oxide	1.1191/C45E	□	□
	FJUAS	FJUBS	FJUCS	1.4031/X38Cr13		—	1.4031/X38Cr13		

25 / ( 6.3 )

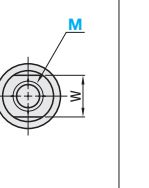
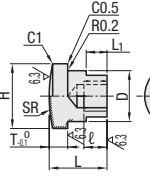
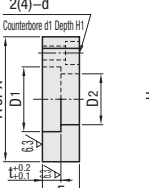
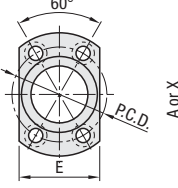
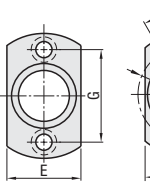
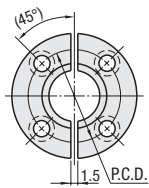
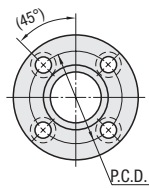
## Mounting Flange

Standard Type

Separate Type

Compact Type

Space Saving Type



## Standard Type

Part Number	Type	Mounting Flange						Cylinder Connector													
		M	A	D1	D2	t	F	P.C.D.	d	d1	H1	E	G	MxPitch	ℓ	L	D	H	T	W	L1
Standard Type FJA FJAS	3	42	18	13	5	10	30	4.5	8	5	24	30	3x0.5	6	15	12	17	5	10	6	40
	4	48	20	15	6	12	34	6	9.5	5.5	28	34	4x0.7	8	20	14	19	6	12	8	50
	5	51	24	17	8	16	37	7	11	6	30	37	5x0.8	10	25	16	23	8	14	10	60
	6	54	28	21	8	16	40	7	11	6	32	40	6x1.0	12	25	16	23	8	14	10	60
	8	51	24	17	8	16	37	7	11	6	30	37	8x1.25	14	25	16	23	8	14	10	60
Separate Type FJB FJBS	10	54	28	21	8	16	40	7	11	6	32	40	10x1.25	15	25	16	23	8	14	10	60
	12	70	36	27	10	20	52	10	14	8	42	52	12x1.25	18	35	25	34	10	22	12	100
	14	70	36	27	10	20	52	10	14	8	42	52	14x1.5	21	35	25	34	10	22	12	100
	16	90	46	35	12	24	68	12	17.5	10	54	68	16x1.5	24	45	32	43	12	27	15	150
Compact Type FJC FJCS	18	90	46	35	12	24	68	12	17.5	10	54	68	18x1.5	27	45	32	43	12	27	15	150
	20	106	56	44	15	30	80	14	20	12	66	80	20x1.5	30	55	40	52	15	32	18	200
	22	106	56	44	15	30	80	14	20	12	66	80	22x1.5	33	55	40	52	15	32	18	200
	24	116	66	53	16	32	86	14	20	12	78	86	24x1.5	36	60	49	62	16	41	23	250
	26	116	66	53	16	32	86	14	20	12	78	86	26x1.5	39	60	49	62	16	41	23	250
30	134	74	59	18	40	104	18	26	18	80	104	30x1.5	43	65	54	69	18	46	24	250	
36	134	74	59	18	40	104	18	26	18	80	104	36x1.5	45	65	54	69	18	46	24	250	

\*1.4125/1.4031/X38Cr13Mo17 and 1.4031/X38Cr13 Hardened Type may discolor due to Hardening.

## Space Saving Type

Part Number	Type	Mounting Flange						Cylinder Connector												
		M	A	D1	D2	t	F	P.C.D.	d	d1	H1	E	G	MxPitch	ℓ	L	D	H	T	W
Standard Type FJUA FJUAS	5	34	17	13	5	11	24	4.5	8	5	22	24	5x0.8	10	12	16	5	10	6	50
	6	40	23	17	5	11	30	4.5	8	5	25	30	6x1.0	12	12	16	5	10	6	50
	8	40	23	17	5	11	30	4.5	8	5	25	30	8x1.25	14	16	22	5	10	6	50
	10	40	23	17	5	11	30	4.5	8	5	25	30	10x1.25	15	16	22	5	10	6	50
	12	52	32	24	5.5	12	40	6	9.5	5.5	34	40	12x1.25	18	22	30	5.5	19	10	60
Separate Type FJUB FJUBS	14	52	32	24	5.5	12	40	6	9.5	5.5	34	40	14x1.5	21	22	30	5.5	19	10	60
	16	62	39	31	8	16	48	7	11	6	41	48	16x1.5	24	28	36	8	21	12	100
	18	62	39	31	8	16	48	7	11	6	41	48	18x1.5	27	28	36	8	21	12	100
	20	74	46	36	10	20	58	10	14	8	48	58	20x1.5	30	32	42	10	26	15	150
Compact Type FJUC FJUCS	22	74	46	36	10	20	58	10	14	8	48	58	22x1.5	33	32	42	10	26	15	150
	24	80	52	42	12	24	64	10	14	8	54	64	24x1.5	36	38	48	12	32	16	200
	26	80	52	42	12	24	64	10	14	8	54	64	26x1.5	39	38	48	12	32	16	200
	30	90	62	52	16	32	74	14	18	8	64	74	30x1.5	43	48	58	16	36	18	250
	36	90	62	52	16	32	74	14	18	8	64	74	36x1.5	45	48	58	16	36	18	250

\*1.4031/X38Cr13 Hardened Type may discolor due to Hardening. \*Space saving type is a special floating joint for air cylinders.

M	Standard Type						Space Saving Type					
	FJA	FJB	FJC	FJAS	FJBS	FJCS	FJUA	FJUB	FJUC	FJUAS	FJUBS	FJUCS
3	10,90	12,40	10,90	29,00	45,00	32,80	-	-	-	-	-	-
4	-	-	-	-	-	-	-	-	-	-	-	-
5	12,20	13,20	12,20	31,20	49,50	38,70	11,90	14,50	12,00	27,80	32,20	28,70
6	13,30	14,30	13,30	22,90	29,10	22,90	17,70	20,60	17,80	30,40	35,00	31,40
8	13,70	14,70	13,70	24,10	30,40	24,10	-	-	-	-	-	-
10	13,70	14,70	13,70	24,10	30,40	24,10	-	-	-	-	-	-
12	20,00	22,40	20,00	37,80	48,20	37,80	21,50	26,00	21,60	41,10	47,10	42,00
14	20,00	22,40	20,00	37,80	48,20	37,80	-	-	-	-	-	-
16	29,50	32,20	29,50	60,90	79,70	60,90	27,50	31,90	27,80	57,80	66,90	59,10
18	29,50	32,20	29,50	60,90	79,70	60,90	-	-	-	-	-	-
20	31,70	35,00	31,70	144,40	216,00	151,00	36,60	40,80	36,60	73,40	98,20	74,70
22	31,70	35,00	31,70	144,40	216,00	151,00	-	-	-	-	-	-
24	46,30	51,00	49,20	112,00	117,80	114,30	44,20	49,70	45,20	88,90	106,90	91,20
26	46,30	51,00	49,20	112,00	117,80	114,30	-	-	-	-	-	-
30	89,60	103,00	94,60	157,50	164,50	159,80	76,40	81,80	77,40	130,70	149,90	133,00
36	89,60	103,00	94,60	157,50	164,50	159,80	-	-	-	-	-	-

M	U
3-10	0.5
12-14	1
16-18	1.5
20-26	2
30-36	2.5 (2)

\*Value in ( ) is for Space Saving Type.

\*Red figures in the price list are the prices for the added specifications.

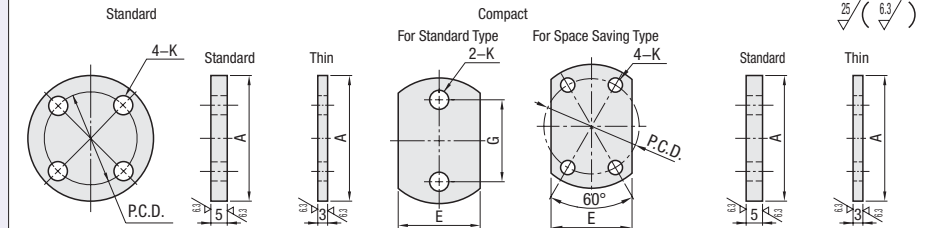
Order Example, Volume Discount and Product time # Next Page

## Backing Plates



Shape	Type				□	□	□
	Standard		Compact				
For Standard Type	Standard	Thin	Standard	Thin	1.1191/C45E	45-50HRC	Black Oxide
	BPFAS	BPFUA	BPFCS	BPFUCS			1.4125/X105CrMo17*
For Space Saving Type	BPUAS	BPUUA	BPUCS	BPUUCS	1.1191/C45E	1.4031/X38Cr13	Black Oxide
	BPUAS	BPUUA	BPUCS	BPUUCS			1.4031/X38Cr13

\*Material for 1.4031/X38Cr13 and BPFUCS is 1.4031/X38Cr13



## Floating Joint (For Standard Type) Backing Plates

Part Number	Type	No.	A	P.C.D.	E	G	K	Unit Price							Qty. 1-4	
								Standard				Thin				
								BPFA	BPFC	BPFAS	BPFCS	BPFUA	BPFUCS	BPUAS	BPUUCS	
Standard Type Standard BPFA BPFAS	Thin BPFUA BPFUCS	3	42	30	24	30	4.5	3,30	3,50	10,20	10,80	-	-	-	-	-
		4	48	34	28	34	6	3,60	3,90	10,60	12,30	4,50	4,60	9,20	9,20	-
		5	51	37	30	37	7	3,60	3,90	5,40	5,50	5,10	5,40	10,80	10,90	-
		6	54	40	32	40	7	3,60	3,90	5,40	5,50	5,10	5,40	10,80	10,90	-
		8	51	37	30	37	7	3,60	3,90	5,40	5,50	5,10	5,40	10,80	10,90	-
		10	54	40	32	40	7	3,60	3,90	5,40	5,50	5,10	5,40	10,80	10,90	-
		12	70	52	42	52	10	4,90	4,90	8,50	8,80	6,60	6,90	11,30	11,40	-
		14	70	52	42	52	10	4,90								