



Miniature Linear Guides

-Standard Block · Interchangeable, Slight Clearance-

Linear Guide Related Products			
Position-keeping Parts	Rails Height Adjusting Blocks	Blocks Fall-off Prevention Parts Dust Resistant Parts	Blocks / Rails Fixing Parts
P581~ P588			

CAD Data

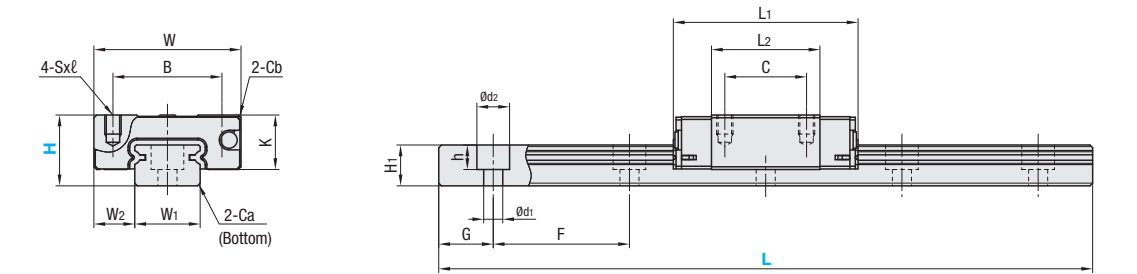
Features: The most basic type among all industry standard specifications. Select the block from standard types.



Material Hardness	Type Standard Grade				L Dimension	Blocks Quantity
	Sets		Blocks	Rails		
	Side Seals	No Side Seal				
JIS STKM (Alloy Steel including JIS SCM) 58HRC~	SEBZ	SEBZ-N	SEZB	STZL	Selectable	1
	SE2BZ	SE2BZ-N		STZLF		2
	SEBLZ	SEBLZ-N	SEZB-N	STZLF	Specified	1
	SE2BLZ	SE2BLZ-N				2
Stainless Steel (1.4125/ X105CrMo17 Material) 56HRC~	SSEBZ	SSEBZ-N	SZB	SZL	Selectable	1
	SSE2BZ	SSE2BZ-N		SZLF		2
	SSEBLZ	SSEBLZ-N	SZB-N	SZLF	Specified	1
	SSE2BLZ	SSE2BLZ-N				2

Blocks and rails can be used interchangeably with Interchangeable-Slight Clearance Type.

Heat Resistant Temperature: -20~80°C



Precautions for Use

- Blocks are equipped with retainers (wire) to prevent balls from falling out. Refer to P501
- Straight grooves are provided on datum planes. Be sure to match the datum lines when using.
- No Side Seal Type is not equipped with side seals to prevent foreign object intrusions, thus the product cannot be used in airborne particle contaminated environments.
- Rails cannot be connected to be extended.
- Running parallelism is the value measured after the rail is mounted.

Accessories

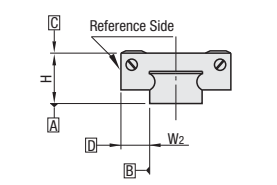
- H8 comes with cap screws (M2x6).
- Others: For G dimensions of L Dimension Configurable Type, refer to P507
- Lithium soap based grease (Multemp Grease PS2 by Kyodo Yushi Co., Ltd.) is filled.

Part Number	Block Dimensions				Guide Rail Dimensions												
	Type	H	W ±0.05	L1	B	C	SxL	L2	K	Cb	W1 ±0.005	W2	H1	Ca	Counterbored Holes d1xd2xh	F	G
JIS STKM (1 Block)	(2 Blocks)	8	17	23.6 (22.8)	12	8	M2x2.5	13.6	6.5	0.3	7	5	4.7	0.3	2.4x4.2x2.3	15	5
SEBZ	SE2BZ	10	20	30 (29.2)	15	10	M3x3	19	7.8	0.3	9	5.5	5.5	0.3	3.5x6x3.5	20	7.5
SEBLZ	SE2BLZ																
No Side Seal		13	27	33.9	20	15	M3x3.5	19.9	10	0.5	12	7.5	7.5	0.5	3.5x6x4.5	25	10
SEBZ-N	SE2BZ-N																
SEBLZ-N	SE2BLZ-N																
Rails		16	32	42.4	25	20	M3x4	27.4	12	0.5	15	8.5	9.5	0.5	3.5x6x4.5	40	15
STZL	SZL																
STZLF	SZLF																
Blocks		20	40	50	30	25	M4x6	34.6	15	0.5	20	10	11	0.5	6x9.5x5.5	60	20
SEZB	SEZB-N																
SZB	SZB-N																

No side seal option is available for H8 and 10 only. Values in () are for No Seal Type.

H	Basic Load Rating		Allowable Static Moment			Mass	
	C (Dynamic) kN	Co (Static) kN	MA N·m	Mb N·m	Mc N·m	Blocks kg	Guide Rails kg/m
8	0.9	1.5	4.1	4.1	5.2	0.01	0.19
10	1.5	2.5	5.1	5.1	10.2	0.02	0.31
13	2.2	3.3	8.8	9.5	16.1	0.04	0.61
16	3.6	5.4	21.6	23.4	39.6	0.06	1.02
20	5.2	8.5	48.4	48.4	86.4	0.12	1.65

Preload and Accuracy Standards



Radial Clearance (µm)	
Interchangeable-Slight Clearance	0~15

Dimension Precision (µm)		Standard Grade
Height H Tolerance		±20
Height H Pair Variation		40
Width W2 Tolerance		±25
Width W2 Pair Variation		40
Running Parallelism of surf. C against surf. A		Refer to P501
Running Parallelism of surf. D against surf. B		

Standard Class (Interchangeable-Slight Clearance) meets the above values even after the block is replaced.

Sliding Resistance (N)

Height (H)	Standard	No Side Seal
8	0.3	0.2
10	0.5	0.4

Data above are reference values.

Sliding resistance for No Side Seal Type is smaller than that for Standard Type.

Order Example

Part Number - L

SSEBZ10 - 75

SZL10 - 75

SZB10

SSEBZ10L - 75 (L Type Greased)

SSEBZ10G - 75 (G Type Greased)

Alternative grease types available. For Days to Ship, Price and Performance, refer to P507

Days to Ship

8 Days

6 Days

Express A 8,00 EUR / piece P. 87

Express Charge of 21.60 EUR for 3 or more identical pieces. Express Services not available for No Side Seal Type.

Price

Volume Discount (Round down to one Cent.) P. 87

Quantity	1-6	7 or 8	9 or 10	11-29
Discount Rate	5%	10%	10%	18%

For Days to Ship of No Side Seal Type of more than 11 pcs., please request a quotation.

Alterations

Part Number - L - (MC · RLC · LLC)

SEBZ13 - 95 - RLC

MC only 10 Days

Alterations	Code	Spec.	Price Adder
Female Thread Holes	MC	Changes rail mounting holes from H 8 M3 to H 10 M4 tapped holes. Express Services not available.	Free of charge
Rail Ends Cut	LLC	Cuts rail ends. Ordering Code LLC	5,00
Rail is cut with the product ID facing out (datum on other side).	RLC	Applicable to Selectable Type only. Overall length will be shorter by cutting. Not applicable to H8. Not applicable to H10, H35 and H13, L45.	5,00

H	Selectable L	€ Unit Price							
		1 Block SEBZ SEBZ-N	1 Block SSEBZ SSEBZ-N	2 Blocks SE2BZ SE2BZ-N	2 Blocks SSE2BZ SSE2BZ-N	STZL	SZL	SEZB SEZB-N	SZB SZB-N
8	40								
8	55								
8	70								
8	85								
8	100								
8	115								
8	130								
10	35								
10	55								
10	75								
10	95								
10	115								
10	135								
10	155								
10	175								
10	195								
10	215								
10	235								
10	255								
10	275								
13	45								
13	70								
13	95								
13	120								
13	145								
13	170								
13	195								
13	220								
13	245								
13	270								
13	295								
13	320								
13	345								
13	370								
13	395								
13	420								
13	445								
13	470								
16	70								
16	110								
16	150								
16	190								
16	230								
16	270								
16	310								
16	350								
16	390								
16	430								
16	470								
16	510								
16	550								
16	590								
16	630								
16	670								
20	100								
20	160								
20	220								
20	280								
20	340								
20	400								
20	460								
20	520								
20	580								
20	640								
20	700								

H	L Specified (1mm Increment)	€ Unit Price							
		1 Block SEBLZ SEBLZ-N	1 Block SSEBLZ SSEBLZ-N	2 Blocks SE2BLZ SE2BLZ-N	2 Blocks SSE2BLZ SSE2BLZ-N	STZLF	SZLF		
8	41-54								
8	56-69								
8	71-84								
8	86-99								
8	101-114								
8	116-129								
10	36-54								
10	56-74								
10	76-94								
10	96-114								
10	116-134								
10	136-154								
10	156-174								
10	176-194								
10	196-214								
10	216-234								
10	236-254								
10	256-274								
13	46-69								
13	71-94								
13	96-119								
13	121-144								
13	146-169								
13	171-194								
13	196-219								
13	221-244								
13	246-269								
13	271-294								
13	296-319								
13	321-344								
13	346-369								
13	371-394								
13	396-419								
13	421-444								
13	446-469								
16	71-109								
16	111-149								
16	151-189								
16	191-229								
16	231-269								
16	271-309								
16	311-349								
16	351-389								
16	391-429								
16	431-469								
16	471-509								
16	511-549								
16	551-589								
16	591-629								
16	631-669								
20	101-159								
20	161-219								
20	221-279								
20	281-339		</						