

Miniature Linear Guides

-Long Blocks / Interchangeable, Slight Clearance-

Linear Guide Related Products			
Position-keeping Parts	Rails Height Adjusting Blocks	Blocks Fall-off Prevention Parts Dust Resistant Parts	Blocks / Rails Fixing Parts
P581~ P588			

CAD Data

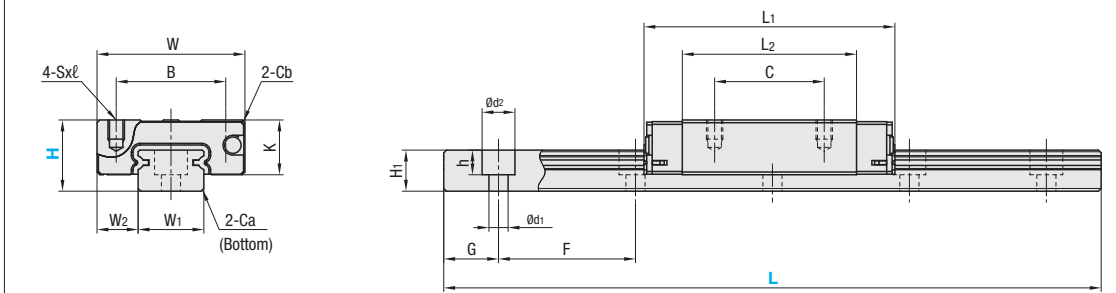
Features: Long Block Type of industry standard specifications. Higher load ratings and allowable moments than standard blocks.



Material Hardness	Type Standard Grade		L Dimensions	Blocks Quantity
	Sets	Blocks		
JIS STKM (Alloy Steel including JIS SCM) 58HRC~	SELBZ	SZLB	Selectable	1
	SEL2BZ		2	
	SELBLZ		1	
	SEL2BLZ		2	
Stainless Steel (1.4125/X105CrMo17 Material) 56HRC~	SSELBZ	SSZLB	Selectable	1
	SSEL2BZ		2	
	SSELBLZ		1	
	SSEL2BLZ		2	

Heat Resistant Temperature: -20~80°C

Blocks and rails can be used interchangeably with Interchangeable-Slight Clearance Type.



- Precautions for Use**
- Blocks are equipped with retainers (wire) to prevent balls from falling out. Refer to P501
 - Straight grooves are provided on datum planes. Be sure to match the datum lines when using.
 - Rails cannot be connected to be extended.
 - Running parallelism is the value measured after the rail is mounted.
- Accessories**
- H8 comes with cap screws (M2x6).
 - Others: For G dimensions of L Dimension Configurable Type, refer to P507
 - Lithium soap based grease (Multemp Grease PS2 by Kyodo Yushi Co., Ltd.) is filled.

Part Number	Block Dimensions										Guide Rail Dimensions					
	Type	H	W ±0.05	L1	B	C	Sxℓ	L2	K	Cb	W1 ±0.005	W2	H1	Ca	Counterbored Holes d1xd2xh	F
JIS STKM (1 Block)	8	17	32	12	13	M2x2.5	22	6.5	0.3	7	5	4.7	0.3	2.4x4.2x2.3	15	5
SELBZ (2 Blocks)		20	40	15	16	M3x3	29	7.8	0.3	9	5.5	5.5	0.3	3.5x6x3.5	20	7.5
SEL2BZ (1 Block)	10	27	45.8	20	20	M3x3.5	31.8	10	0.5	12	7.5	7.5	0.5	3.5x6x4.5	25	10
SELBLZ (2 Blocks)		32	58.3	25	25	M3x4	43.3	12	0.5	15	8.5	9.5	0.5	3.5x6x4.5	40	15
SEL2BLZ (1 Block)	13	40	67.7	30	30	M4x6	52.3	15	0.5	20	10	11	0.5	6x9.5x5.5	60	20
SSELBZ (2 Blocks)		40	67.7	30	30	M4x6	52.3	15	0.5	20	10	11	0.5	6x9.5x5.5	60	20
SSEL2BZ (1 Block)	16	40	67.7	30	30	M4x6	52.3	15	0.5	20	10	11	0.5	6x9.5x5.5	60	20
SSEL2BLZ (2 Blocks)		40	67.7	30	30	M4x6	52.3	15	0.5	20	10	11	0.5	6x9.5x5.5	60	20

kgf=Nx0.101972

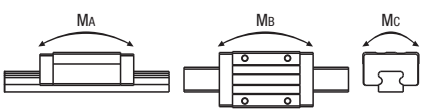
H	Basic Load Rating		Allowable Static Moment			Mass	
	C (Dynamic) kN	Co (Static) kN	Ma N·m	Mb N·m	Mc N·m	Blocks kg	Guide Rails kg/m
8	1.6	2.4	7.5	7.5	9.0	0.016	0.19
10	2.2	3.7	12.3	12.3	13.0	0.03	0.31
13	3.5	5.3	24.5	26.4	32.3	0.06	0.61
16	5.8	8.7	57.8	62.6	67.6	0.10	1.02
20	7.2	13.5	80.7	80.7	138.2	0.18	1.65

Preload and Accuracy Standards

Radial Clearance (µm)	
Interchangeable-Slight Clearance	0~15

Dimension Precision (µm)		Standard Grade
Height H Tolerance	±20	
Height H Pair Variation	40	
Width W2 Tolerance	±25	40
Width W2 Pair Variation	40	
Running Parallelism of surf. C against surf. A		Refer to P501
Running Parallelism of surf. D against surf. B		

Standard Class (Interchangeable-Slight Clearance) meets the above values even after the block is replaced.



Order Example

Part Number - L

SELBZ10 - 275

SELBZ10L - 75 (L Type Greased)

SELBZ10G - 75 (G Type Greased)

Alternative grease types available.
For Days to Ship, Price and Performance, refer to P507

Days to Ship

8 Days

Express A 8,00 EUR / piece P. 88

A Express Charge of 21,60 EUR for 3 or more identical pieces.

Price

Quantity	1~6	7 or 8	9 or 10	11~15
Discount Rate	€ Unit Price	5%	10%	18%

Volume Discount (Round down to one Cent.) P. 87

Alterations

Part Number - L - (MC · RLC · LLC)

SEL2BZ16 - 430 - MC - RLC

MC only 10 Days

Alterations	Code	Spec.	Price Adder
Female Thread Holes	MC	Changes the rail mounting hole from counterbored holes to tapped holes. Express Service is not available.	Free of charge
Rail Ends Cut	LLC	Cuts rail ends. Ordering Code LLC	5,00
Rail Ends Cut	RLC	Cuts rail ends. Ordering Code LLC	5,00

H	Selectable L	€ Unit Price			
		1 Block	2 Blocks	SZLB	SSZLB
8	40				
	55				
	70				
	85				
	100				
	115				
	130				
	145				
	170				
	195				
10	55				
	75				
	95				
	115				
	135				
	155				
	175				
	195				
	215				
	235				
13	255				
	275				
	300				
	320				
	345				
	370				
	395				
	420				
	445				
	470				
16	510				
	550				
	590				
	630				
	670				
	710				
	750				
	790				
	830				
	870				
20	910				
	950				
	990				
	1030				
	1070				
	1110				
	1150				
	1190				
	1230				
	1270				

H	L Specified (1mm Increment)	€ Unit Price			
		SELBLZ	SSELBLZ	SEL2BLZ	SSEL2BLZ
8	41-54				
	56-69				
	71-84				
	86-99				
	101-114				
	116-129				
10	56-74				
	76-94				
	96-114				
	116-134				
	136-154				
	156-174				
	176-194				
	196-214				
	216-234				
	236-254				
13	256-274				
	271-294				
	296-319				
	321-344				
	346-369				
	371-394				
	396-419				
	421-444				
	446-469				
	471-509				
16	511-549				
	551-589				
	591-629				
	631-669				
	671-709				
	711-749				
	751-789				
	791-829				
	831-869				
	871-909				
20	911-949				
	951-989				
	991-1029				
	1031-1069				
	1071-1109				
	1111-1149				
	1151-1189				
	1191-1229				
	1231-1269				
	1271-1309				

For rail unit price for Interchangeable-Slight Clearance Type, see P516