

# Housing Units with Clamp Lever

Tall Blocks - Single/Double, Right/Left Clamp Lever

= For customers selecting MISUMI original specifications =

The part enclosed in the red frame is right lever part of standard specifications. Consider these specifications while selecting the product.

# Housing Units with Clamp Lever

Wide Blocks - Single/Double, Right/Left Clamp Lever

= For customers selecting MISUMI original specifications =

The part enclosed in the red frame is right lever part of standard specifications. Consider these specifications while selecting the product.

■Features: MISUMI original. The Clamp Lever Type can position workloads easier compared to the Standard.

## MISUMI Original

### Right Lever, Single



### Left Lever, Single



### Right Lever, Double



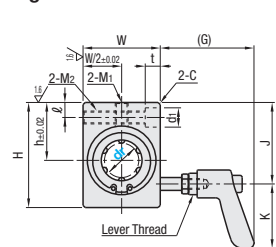
### Left Lever, Double



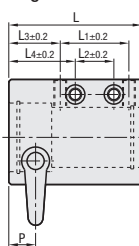
RoHS10

Type				Linear Bushing Used (≠P315)	Housing		Collar / Thread	Clamp Lever (≠P2-1141)	Lever		Lever Thread	Nut	Ambient Operating Temp.
Right Lever		Left Lever			MMaterial	SSurface Treatment	MMaterial		MMaterial	SSurface Treatment	MMaterial	MMaterial	
Single	Double	Single	Double										
LHSSC	LHSSWC	LHSLC	LHSLWC	LMU	Aluminum Alloy	Clear Anodize	EN 1.4301 Equiv.	CLFSC	Zinc Diecast	Baked Paint	EN 1.4305 Equiv.	Stainless Steel (Stainless Steel)	-20~80°C

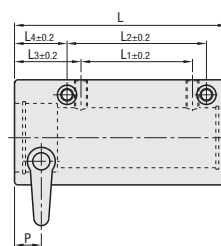
### Right Lever



### Single



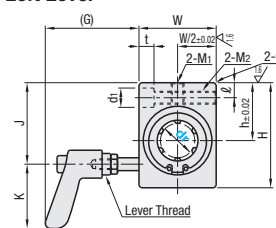
### Double



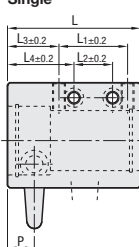
6.3 (1.6)



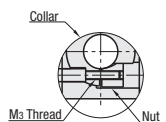
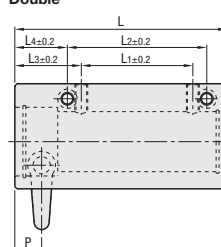
### Left Lever



### Single



### Double



The linear shaft is clamped by the internal nut as the lever is rotated.

Part Number				L		L1		L2		L3		L4		h	W	H	(G)	J	K	P	ℓ	M1 (Effective Length)	M2 (Effective Length)	M3	d1x1	C
Type	dr	Tolerance		Single	Double	Single	Double	Single	Double	Single	Double	Single	Double													
		Single	Double																							
LHSSC LHSLC LHSSWC LHSLWC	16	0 -0.009	0 -0.010	62	99	32	52	18	65	24	31	24.5	27	36	49	43.7	38	30	12.5	7	M6 (13)	M6 (29)	M4	9x7 (For M5 Screws)	1	
	20			67	109	36	58		70	23	33	32	27	31	42	54	40.7	44		30	8	M8 (15)		M8 (34)		11x8 (For M6 Screws)
	25	0 -0.010	0 -0.012	86	145	42	80	22	100	30.5	41	40.5	31	37	52	65	45.7	53.5	30	13.5	9	M10 (17)	M10 (42)	M5	14x10 (For M8 Screws)	
	30			91	155	44	90		110	32		43		40	58	71	42.7	59	30		M10 (17.5)	M10 (48)				

For Precautions for Use, see P303.

Make certain that the screws do not interfere with the bushing as M1 are through holes. The datum surface is located on the other side of product ID label.

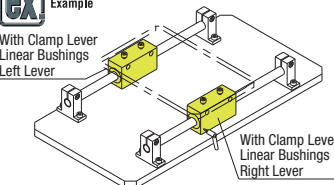
dr	Max. Thrust Load N		Basic Load Rating				Mass (g)		Unit Price	
	Greased	Tightening Torque N·m	C (Dynamic) N		Co (Static) N		Single	Double	LHSSC	LHSSWC
			Single	Double	Single	Double				
16	250	1.5	775	1230	1180	2350	347	526		
20	250	1.5	882	1400	1370	2740	438	686		
25	250	3	980	1560	1570	3140	841	1387		
30	500	3	1570	2490	2740	5490	1015	1689		

kgf=Nx0.101972

### Precautions for Use

- For installation, loosen a lever until the nut does not interfere with the shaft, then insert the shaft.
- Do not tighten the clamp without a shaft inserted. It may cause deformation and permanent damages.
- Use as an interim measure. Do not use as a permanent safety position holding device.

Example



### Max. Thrust Load Test Method

- The collar is tightened to torque value(s) shown in the chart, then compressive load is applied with the tester. The compressive load where the shaft begins to move is defined as the Max. Thrust Load.
- \* Max. thrust load of greased linear bushings was tested.



Ordering Example

### Part Number

- LHSSC16 (L Type Greased)
- LHSLC16L (L Type Greased)
- LHSSC16G (G Type Greased)
- LHSLC20H (H Type Greased)

Alternative grease types available.

For Days to Ship, Price and Performance, see P304.

■Features: MISUMI original. The Clamp Lever Type can position workloads easier compared to the Standard.

## MISUMI Original

### Right Lever, Single



### Left Lever, Single



### Right Lever, Double



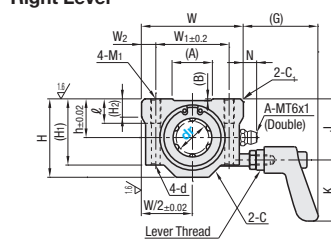
### Left Lever, Double



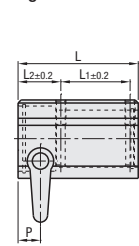
RoHS10

Type				Linear Bushing Used (≠P315)	Housing		Collar / Thread	Clamp Lever (≠P2-1141)	Lever		Lever Thread	Nut	Ambient Operating Temp.
Right Lever		Left Lever			MMaterial	SSurface Treatment	MMaterial		MMaterial	SSurface Treatment	MMaterial	MMaterial	
Single	Double	Single	Double										
LHBBBC	LHBBWC	LHBLC	LHBLWC	LMU	Aluminum Alloy	Clear Anodize	EN 1.4301 Equiv.	CLFSC	Zinc Diecast	Baked Paint	EN 1.4305 Equiv.	Stainless Steel (Stainless Steel)	-20~80°C

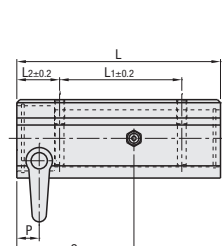
### Right Lever



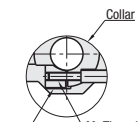
### Single



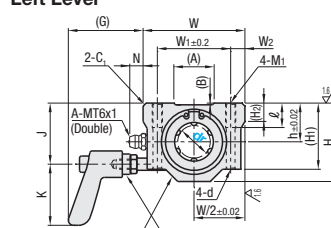
### Double



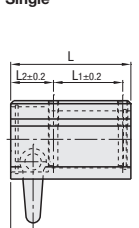
6.3 (1.6)



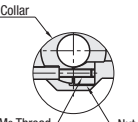
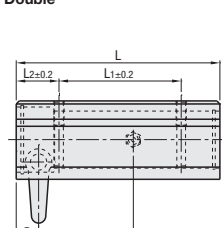
### Left Lever



### Single



### Double



The linear shaft is clamped by the internal nut as the lever is rotated.

Part Number		L		L1		L2		h	H	(H1)	(H2)	W	W1	W2	M1	M2	d	ℓ	(A)	(B)	(G)	J	K	P	N*	Q*	C	C1
Type	dr	Tolerance Single	Tolerance Double	Single	Double	Single	Double																					
LHBBC	16	0 -0.009	0 -0.010	59	100	34	60	21	21	19	38.5	32.5	9	50	36	M5	4.3	12	19.8	0.85	36.7	30		11	6.5	57.5	6	1.5
LHBLC	20			69	111	40	70	24	23	21	41	35	11	54	40	M6	5.2		21	0.5	34.7	34		11.5	7.5	63	6	1.5
LHBBWC	25	0 -0.010	0 -0.012	85	148	50	100	26.5	27	26	51.5	42	12	76	54	11	M8	7	36	1	33.7	42.5		13.5	4.5	83	9.5	1.5
LHBLWC	30			90	158	58	110	25	27	30	59.5	49	15	78	58	10			39.9	0.75	32.7	49			5.5	88	10.5	1.5

For Precautions for Use, see P303.

Make certain that the screws do not interfere with the bushing as M1 are through holes. The datum surface is located on the other side of product ID label.

\* Only available for Double Type.

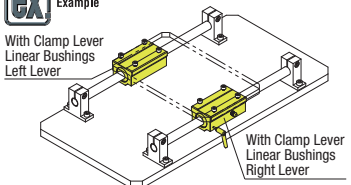
dr	Max. Thrust Load N		Basic Load Rating				Mass (g)		Unit Price	
	Greased	Tightening Torque N·m	C (Dynamic) N		Co (Static) N		Single	Double	LHBBC	LHBBWC
			Single	Double	Single	Double				
16	250	1.5	775	1230	1180	2350	358	538		
20	250	1.5	882	1400	1370	2740	420	725		
25	250	3	980	1560	1570	3140	865	1465		
30	500	3	1570	2490	2740	5490	1039	1784		

kgf=Nx0.101972

### Precautions for Use

- For installation, loosen a lever until the nut does not interfere with the shaft, then insert the shaft.
- Do not tighten the clamp without a shaft inserted. It may cause deformation and permanent damages.
- Use as an interim measure. Do not use as a permanent safety position holding device.

Example



### Max. Thrust Load Test Method

- The collar is tightened to torque value(s) shown in the chart, then compressive load is applied with the tester. The compressive load where the shaft begins to move is defined as the Max. Thrust Load.
- \* Max. thrust load of greased linear bushings was tested.



Ordering Example

### Part Number

- LHBBC16 (L Type Greased)
- LHBLC20L (L Type Greased)
- LHBBC16G (G Type Greased)
- LHBLC20H (H Type Greased)

Alternative grease types available.

For Days to Ship, Price and Performance, see P304.