

Single Axis Actuators LX20 Standard / Cover Type



Convenient Sensor Sets are also available. P420

Design/Utility Model Registered



Specifications	
LX20	
Standard / Cover	
Screw Shaft Dia. (mm)	6
Lead (mm)	1, 5
Accuracy	High Grade / Precision Grade
A Accessory	
① Motor Adapter Plate M EN AW-5052 Equiv. S Black Anodize	
② Adapter Plate Screw 4 pcs. M EN 1.4567 Equiv.	
No accessory is included with No Motor Bracket Type.	
For Material table, see P.411	

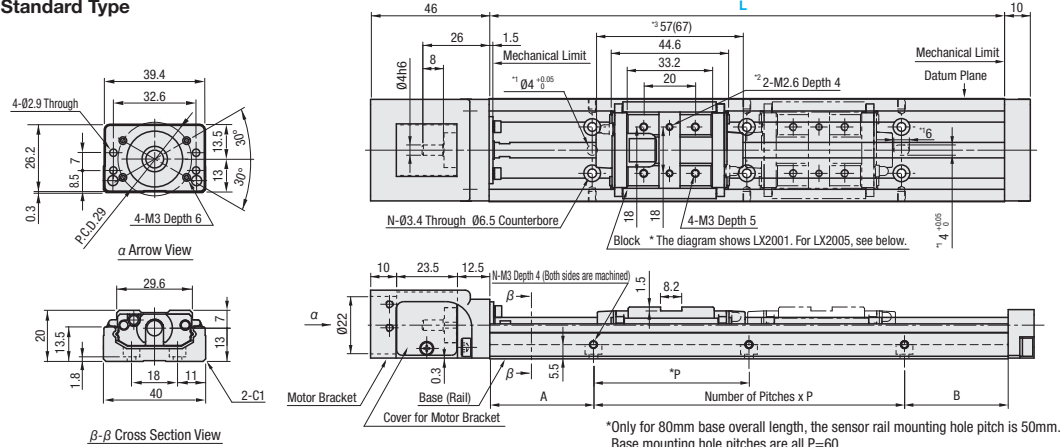
Part Number	Standard Grease		Low Dust Generation Grease		Lubrication Unit MX-equipped (Standard Grease)	
	High Grade	Precision Grade	High Grade	Precision Grade	High Grade	Precision Grade
Lead 1	LX2001 (C)	LX2001 (C) P	LX2001 (C) G	LX2001 (C) PG	LX2001 (C) -MX	LX2001 (C) P-MX
Lead 5	LX2005 (C)	LX2005 (C) P	LX2005 (C) G	LX2005 (C) PG	LX2005 (C) -MX	LX2005 (C) P-MX

(C) is for Cover Type.

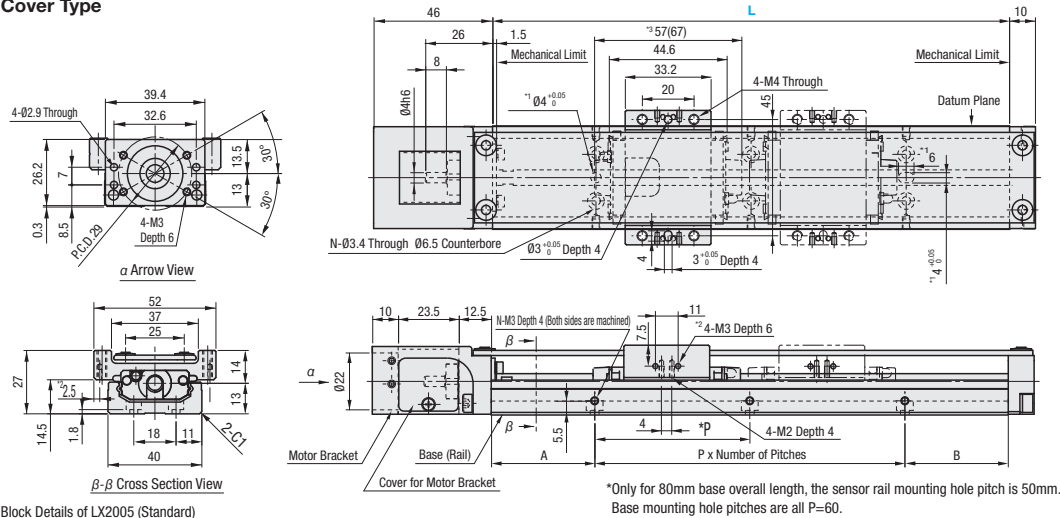
Low Dust Generation Grease Information P.414

Lubrication Unit MX Information P.408

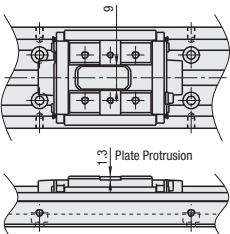
Standard Type



Cover Type



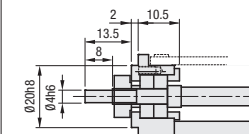
Block Details of LX2005 (Standard)



- *1: Dowel Holes for Base Positioning
- *2: Tapped Holes for Sensor Flag Mount
- *3: Value in () is for Lubrication Unit MX-equipped Type.

No Motor Bracket Type

* For details of the mounting parts, see P.419



- When using LX20 No Motor Bracket Type as per the folding specifications given on P.433 to P.436, shaft may get damaged by the belt tension. Refrain from using it.
- For Double Block Type, double-dashed lined blocks are not connected with the ball screw.
- Precision specification value is the value achieved after fixing rails. (It is not a value before tightening the rail screws.) For values, see P.413

- Effective stroke is the value with 2.5mm margin on each side from mechanical limits, i.e., 5mm in total.
- For Double Block Type, effective strokes are the values when two blocks contact with each other.

Part Number		Block Qty.	Motor Adapter Plates	Base Length (L)	* Effective Stroke			Total Mass (kg)				Mounting Hole Dimensions				
High Grade	* Precision Grade				B1	B2	MX-equipped (B)	B1	B2	B1	B2	A	P	B	Number of Pitches	Number of Holes (N)
(Standard Grease) LX2001 (C) LX2005 (C)	(Standard Grease) LX2001 (C) P LX2005 (C) P	(1 pc.) B1 * MX-equipped types are available in B1 only.	(Servo Motor) A2025 A2028 A2038 A2040 E2040	80 (Lead 1 only)	16.5	-		0.40	0.51	-	0.56	-	10	10	1	4
(Low Dust Generation Grease) LX2001 (C) G LX2005 (C) G	(Low Dust Generation Grease) LX2001 (C) PG LX2005 (C) PG		100	36.5	0.45			20								
			150	86.5	76.5			0.58					0.69			
(Lubrication Unit MX-equipped, Standard Grease) LX2001 (C) -MX LX2005 (C) -MX	(Lubrication Unit MX-equipped, Standard Grease) LX2001 (C) P-MX LX2005 (C) P-MX		(2 pcs.) B2	(No Adapter Plate) N (No Motor Bracket) F	200	136.5	79.5	126.5	0.71	0.79	0.81	0.97	40	60	15	2
				250 (Lead 5 only)	186.5	129.5	176.5	0.83	0.92	0.94	1.10	35		40	3	8
				300 (Lead 5 only)	236.5	179.5	226.5	0.96	1.05	1.07	1.23	30		30	4	10

* Precision Certificate is enclosed with precision grade products.

* Motor adapter plate and mounting screws are not included with No Adapter Plate Type.

* Effective stroke is indicated in dimensions with a margin of 2.5mm each from the ends.

* (C) is for Cover Type.

For Max. Velocity, see P.413

For Moment of Inertia, see P.412

0.004kg will be added to MX-equipped types.

Servo Motor Application Table

Part Number	Flange Size	Manufacturer	Wattage
A2025	25	Yasukawa/Mitsubishi Electric Corporation	10W/20W/30W
A2028	28	Mitsubishi Electric Corporation	30W/50W/100W
A2038	38	Panasonic	50W/100W
E2040	40	SIEMENS	50W/100W
A2040	40	Yasukawa Electric Corporation	50W
		Mitsubishi Electric Corporation	50W
		Keyence Corporation	50W
		Omron Corporation	50W
		Sanyo Denki Co., Ltd.	30W/50W

For details on supported motor types and detailed diagram of Motor Adapter Plates, see P.419

Stepping Motor Application Table

Part Number	Flange Size	Manufacturer	Type
T2028	28	Oriental Motor	2-phase / 5-phase / α -Step
T2042	42		
T2056.4	56.4	NEMA standards	-

NEMA standards are a set of standards stipulated by National Electrical Manufacturers Association of United States.

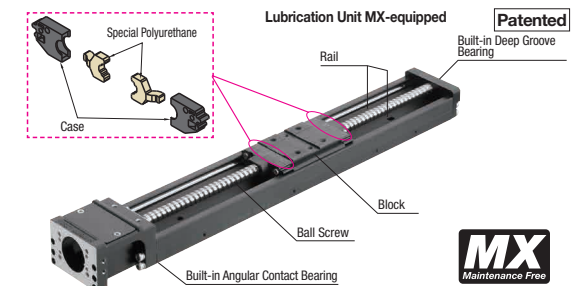
For details on supported motor types and detailed diagram of Motor Adapter Plates, see P.419



Part Number	Block Qty.	Motor Adapter Plates	Base Length (L)
LX2001C	B1	A2025	200
LX2005-MX	B1	A2028	150

Accuracy Standards

Accuracy Standards	High Grade	Precision Grade
Positioning (mm)	0.06	0.02
Backlash (mm)	0.01	0.003
Positioning Repeatability (mm)	± 0.005	± 0.003
Running Parallelism (mm)	0.025	0.01
Starting Torque (N-cm)	1.2	1.2



Unit price for Precision Grade / Low Particle Generation Grease Option / Lubrication Unit MX-equipped

Specifications	Unit Price
Precision Grade	
Low Dust Generation Grease	
Lubrication Unit MX-equipped	
Listed Price + Unit Price = Product Price	
Volume Discount Rate is applicable.	

High Grade Unit Price										
Part Number	L=80 (Lead 1 only)	L=100	L=150	L=200	L=250 (Lead 5 only)	L=300 (Lead 5 only)	Motor Adapter Plates	Block Qty.	Screw Shaft Dia.	Lead
LX20□□-B1-□							Servo Stepping No Adapter Plate	1	6	1
LX20□□-B2-□	-	-	-	-	-	-		2		
LX20□□-B1-F							No Bracket	1	6	5
LX20□□-B2-F	-	-	-	-	-	-		2		
LX20□□C-B1-□							Servo Stepping No Adapter Plate	1	6	1
LX20□□C-B2-□	-	-	-	-	-	-		2		
LX20□□C-B1-F							No Bracket	1	6	5
LX20□□C-B2-F	-	-	-	-	-	-		2		

LX20□□(C) Series sensor set can be specified as an alteration. For Detailed alteration diagram, see P.420