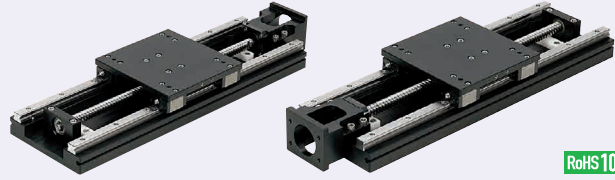


Single Axis Units

Rolled Ball Screws / Precision Ball Screws

Features: Various Sensor Sets (listed on **P515**) are available! Single Axis Units driven by Rolled Ball Screws and Precision Ball Screw. Suitable for heavy load transfer.



Note 1) When fixing a workpiece to the table, make sure that the screw length is not longer than plate thickness t_2 .
 Note 2) Access hole is provided when $L=340$ (except $L_1=100$).
 Note 3) Stroke limit is the stroke at the point of contact with the stopper.
 Note 4) Some motor brackets have D dimensions smaller than D_1 . When selecting couplings, refer to "Coupling Application Examples Parts Numbers" below.

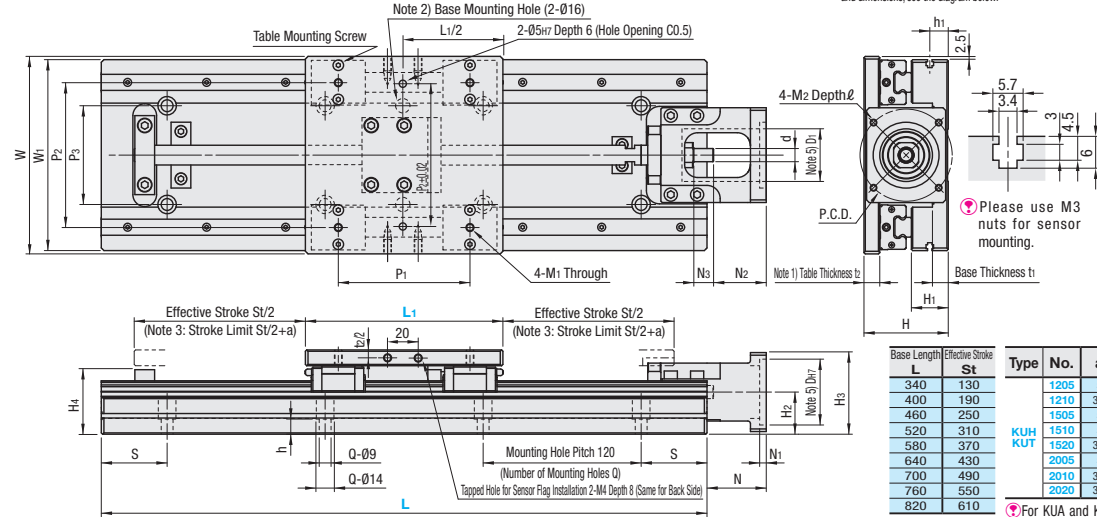


Rolled Ball Screws
KUA (Servo Motor Type)
KUB (Stepping Motor Type)

Precision Ball Screw
KUH (Servo Motor Type)
KUT (Stepping Motor Type)

KUB/KUH Motor Installation Interface

For KUB/KUH Motor installation interface drawing and dimensions, see the diagram below.

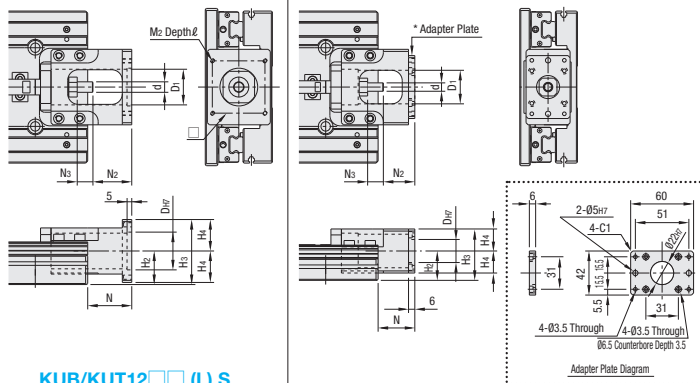


Type	No.	a
KUA KUB	1205	5
	1210	3.5
	1505	5
	1510	5
	1520	5
KUH KUT	1520L	3.5
	2005	5
	2010	3.5
	2020	3.5
	2020L	3.5

For KUA and KUB, $a=5$.

Parts	Base	Table	Motor Bracket	Nut Bracket	Fixed Side Support Unit	Support Side Bearing with Housing	Stopper
Material	Aluminum Alloy	Aluminum Alloy	Aluminum Alloy	Aluminum Alloy	Steel	Aluminum Alloy	Plastic
Surface Treatment	Black Anodize	Black Anodize	Black Anodize	Black Anodize	Black Oxide	Black Anodize	-

KUB/KUT Motor Installation Interface / NEMA Motor Installation Interface (KUA/KUB/KUH/KUT)



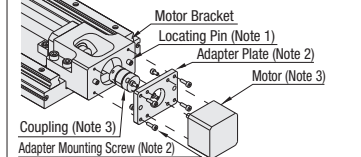
KUB/KUT12 (L) S
KUB/KUT15 (L)
KUB/KUT20 L

KUB/KUT12 (L)

Please see Motor Adapter Plate installation diagram.

Mounting Instruction

KUB/KUT12 (L) Flange (L) 42 Only



Note 1) Locating pins are press-fit into the motor bracket.
 Note 2) A motor adapter plate and 4 pcs. of mounting screws M3x10 are included.
 Note 3) Motor and coupling are not included.

Part Number	Motor Installation Interface (KUB/KUT)											
Type	No.	D	D1	H2	H3	H4	N	N2	N3	d	M2	ℓ
Stepping Motor Type KUB KUT	12 (S) (L)	50	22	33.5	49	21	35	30		8		
	*12 (S) (LS)	31		58	45	40	15					
	15 (L)	31		62	43	38				10		
	2005L	64		64							M4	8
	2010L	50	36	35.5	70	30		58	40	18	12	
KUB KUT	2020L	64		64								
	2020L	70		70								

KUB/KUT12 (S) (L) Flanged surface (its dimensions) protrudes downward from the base bottom surface by 2mm.

NEMA Motor Installation Interface

Type	Part Number	NEMA Motor Installation Interface (KUA/KUB/KUH/KUT)											
NEMA23	KUA KUB KUH KUT	12 (S, L, LS)	28	58									
		15 (L)	32	62									
		2005L	34	64									
		2010L	40	70									
		2020L	34	64									
NEMA34	KUA KUB KUH KUT	15 (L)	32	75								14	
		2005L	34	77									
		2010L	40	83									
		2020L	34	77									
		2020L	40	83									

* When $H_2-H_4 < 0$, Motor Bracket protrudes from Base Fixing Surface.
 * When MCSLC40 is to be applied to NEMA34 series, select Torque 9.0N·m (=1270oz-in) or less.

Part Number	Selection		Ball Screw				Table				Coupling Application Examples									
	Type	No.	Base Length	Table Length	Type	Diameter	Lead	W	H	H1	H2	W	t2	M1	P1	P2	KUA/KUH	KUB/KUT		
Rolled Ball Screw KUA KUB	Precision / Rolled	1204	100	150	12	10	4	150	55	21	28	150	10	M6	110	-	CPDW25	CPDW19		
		1205															MCSLC25	MCSLC20		
		1210															-	CPDW32		
		*1204S															MCSLC32	CPDW32		
		*1205S															-	CPDW32		
		*1210S															100	50	MCSLC32	
		1505															150	100	-	
		1510															460	520	CPDW40	CPDW32
		1520															MCSLC40	MCSLC32		
		1204L															580	640	CPDW25	CPDW19
1205L	640	700	MCSLC25	MCSLC20																
1210L	700	760	-	CPDW32																
*1204LS	760	820	CPDW40	CPDW32																
*1205LS	820	880	MCSLC40	MCSLC32																
*1210LS	880	940	-	CPDW32																
1505L	940	1000	CPDW40	CPDW32																
1510L	1000	1060	MCSLC40	MCSLC32																
1520L	1060	1120	-	CPDW32																
2005L	1120	1180	CPDW40	CPDW32																
2010L	1180	1240	MCSLC40	MCSLC32																
2020L	1240	1300	-	CPDW32																

Caution: Cautions are required when CPDW is used for 400W Servo Motors. Motor peak torque may exceed coupling allowable torque.

Part Number	Base			Base Mounting Hole			Motor Installation Interface (KUA/KUH)																																	
	Type	No.	W1	H4	t1	h1	P3	h	Q	S	P.C.D.	D	D1	H3	N	N1	N2	N3	d	M2	ℓ																			
Rolled Ball Screw KUA KUB	Precision / Rolled	1204(S)	145	42	10	13	9.5	75	L	W=150	W=200	46	30	34	49	37	32	8	M4	8	8																			
		1205(S)																				49	12	20	11.5	400	6	6	340	50	50	70	50	45	62	45	40	10	M5	10
		1505																				400	6	8	400	80	20	46	30	34	49	37	32	8	M4	8				
		1510																				460	8	8	460	50	50	70	50	45	62	45	40	10	M5	10				
		1520																				520	8	10	520	80	20	46	30	34	49	37	32	8	M4	8				
		*1204LS																				580	10	10	580	50	50	70	50	45	62	45	40	10	M5	10				
		*1205LS																				640	10	12	640	80	20	46	30	34	49	37	32	8	M4	8				
		1210L(S)																				700	12	12	700	50	50	70	50	45	62	45	40	10	M5	10				
		1505L																				760	12	14	760	80	20	46	30	34	49	37	32	8	M4	8				
		2005L																				820	14	14	820	50	50	70	50	45	62	45	40	10	M5	10				
2010L	880	14	14	880	50	50	70	50	45	62	45	40	10	M5	10																									
2020L	940	14	14	940	50	50	70	50	45	62	45	40	10	M5	10																									

Part Number	Type	Unit Price 1 - 2 pcs(s).								
		L=340	L=400	L=460	L=520	L=580	L=640	L=700	L=760	L=820
Rolled Ball Screw KUA KUB	Precision / Rolled	1204	-	-	-	-	-	-	-	-
		1210	-	-	-	-	-	-	-	-
		*1204S	-	-	-	-	-	-	-	-
		*1210S	-	-	-	-	-	-	-	-
		1505	-	-	-	-	-	-	-	-
		1510	-	-	-	-	-	-	-	-
		1520	-	-	-	-	-	-	-	-
		1204L	-	-	-	-	-	-	-	-
		1210L	-	-	-	-	-	-	-	-
		*1204LS	-	-	-	-	-	-	-	-
*1210LS	-	-	-	-	-	-	-	-		
1505L	-	-	-	-	-	-	-	-		
1510L	-	-	-	-	-	-	-	-		
1520L	-	-	-	-	-	-	-	-		
2005L	-	-	-	-	-	-	-	-		
2010L	-	-	-	-	-	-	-	-		
2020L	-	-	-	-	-	-	-	-		

Part Number	Type	Unit Price 1 - 2 pcs(s).								
		L=340	L=400	L=460	L=520	L=580	L=640	L=700	L=760	L=820
Precision Ball Screw KUH KUT	Precision	1205	-	-	-	-	-	-	-	-
		1210	-	-	-	-	-	-	-	-
		*1205S	-	-	-	-	-	-	-	-
		*1210S	-	-	-	-	-	-	-	-
		1505	-	-	-	-	-	-	-	-
		1510	-	-	-	-	-	-	-	-
		1520	-	-	-	-	-	-	-	-
		1205L	-	-	-	-	-	-	-	-
		1210L	-	-	-	-	-	-	-	-
		*1205LS	-	-	-	-	-	-	-	-
*1210LS	-	-	-	-	-	-	-	-		
1505L	-	-	-	-	-	-	-	-		
1510L	-	-	-	-	-	-	-	-		
1520L	-	-	-	-	-	-	-	-		
2005L	-	-	-	-	-	-	-	-		
2010L	-	-	-	-	-	-	-	-		
2020L	-	-	-	-	-	-	-	-		

Servo Motor Application Table

Part Number	Manufacturer	Part Number	Output (W)	Flange
KUA/KUH12 (L)	Yasukawa Electric Corporation	SGMAH-A3	30	□40
		SGMAH-A5	50	
		SGMAH-01	100	
		HC-MFS03	50	
		HC-MFS13	100	
	Mitsubishi Electric Corporation	HF-MP03	50	
		HC-MFS13	100	
		HF-MP13	100	
		R2AA04003F	30	
		R2AA04005F	50	
Sanyo Denki Co., Ltd.	R2AA04101F	100		
	R88M-W03030	30		
	R88M-W05030	50		
	R88M-W10030	100		
	SGMAH-02	200		
KUA/KUH15 (L)	Yasukawa Electric Corporation	SGMAH-04	400	□60
		HC-MFS23	200	
		HC-KFS23	200	
		HF-MP23	200	
		HF-MP23	200	
	Mitsubishi Electric Corporation	HA-KP23	200	
		HC-MF43	400	
		HC-KFS43	400	
		HF-MP43	400	
		HF-MP43	400	
Sanyo Denki Co., Ltd.	R2AA06020F	200		
	R2AA06040F	400		
	R88M-W20030	200		
	R88M-W40030	400		
	R88M-W40030	400		

Accuracy / Static Load Capacity

Part Number	Type	No.	Positioning Reproducibility		Static Load Capacity (kg)	Parallelism	
			Horizontal	Vertical		Horizontal	Vertical
Rolled Ball Screw KUA KUB	Precision / Rolled	1204(S)	±0.03 (Rolled)		1679	138	
		1205(S)					
		1210(S)					
		1505	±0.05 (Rolled)				
		1510	±0.03 (Precision)				
		1520					
		1204L(S)	±0.03 (Rolled)				
		1205L(S)					
		1210L(S)					
		*1204LS					
Precision Ball Screw KUH KUT	Precision	1505L	±0.05 (Rolled)		2897	137	
		1510L	±0.03 (Precision)				
		1520L					
		2005L					
		2010L	±0.08 (Rolled)				
		2020L	±0.03 (Precision)				
		2010L	±0.05 (Rolled)				
		2020L					