

Details of Special Greases / Rail Length (L Dimension) Configurable Type

About Special Greases

The standard grease used in the linear guides can be changed to the following types.

Part Number	Product Name	Main Features
● L Type	ET-100K (Made by Kyodo Yushi)	Excels in heat resistance, oxidation stability, adhesion and adhesive power. In addition, splash or leakage is little.
● G Type	LG2 (Made by NSK Ltd.)	Special grease for linear guides, ball screws and etc. for clean-room use.

Product Name	Page	Grease Selection	Unit Price Added to the price of Standard Type
Miniature Linear Guides Ⓢ Not applicable to Heat/Dust Resistant products or products with Lubrication Unit (listed on our website).	P533-P568	● L ● G	
Medium/Heavy Load Linear Guide Ⓢ Not applicable to Plastic Retainer Type.	P569-P572	● L ● G	

Ordering Example

Part Number - L

● SEBL10L - 270 (L Type Greased)
● SEBL10G - 270 (G Type Greased)

Please add L or G after the part number of Regular Type when placing an order.

Alterations

Part Number - L

SEBL10L - 270

Confirm the details of alterations on the page shown in the table on the left.
Not applicable to C-VALUE Products.

Add the unit price in the above table to the unit price of applicable standard product.

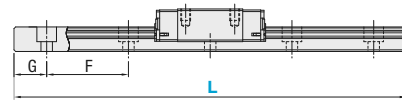
Price Calculation Example: SEBL10L-270 (Standard Preload Type)
(Standard Type Unit Price) + (Additional Unit Price in the Table) = (Total)

Details of the Dimensions about L Dimension Configurable Type

Both ends of the rail are evenly cut for L Configurable. For the number of rail mounting holes (M) in that case, see the table below. In addition, G dimensions are calculated with the formula below.

$$G = \frac{L - (M - 1) \times F}{2}$$

Example: For SSEB13-168, G = $\frac{168 - (7 - 1) \times 25}{2} = 9$ (mm)



Miniature Linear Guides - Standard Rails

H	6, 8	10	13	16	20	Number of Mounting Holes M
L	26~35	36~47	46~57	71~87	101~139	2
L	36~50	48~67	58~82	88~127	140~199	3
L	51~65	68~87	83~107	128~167	200~259	4
L	66~80	88~107	108~132	168~207	260~319	5
L	81~95	108~127	133~157	208~247	320~379	6
L	96~110	128~147	158~182	248~287	380~439	7
L	111~125	148~167	183~207	288~327	440~499	8
L	126~129	168~187	208~232	328~367	500~559	9
L	-	188~207	233~257	368~407	560~619	10
L	-	208~227	258~282	408~447	620~679	11
L	-	228~247	283~307	448~487	680~699	12
L	-	248~267	308~332	488~527	-	13
L	-	268~274	333~357	528~567	-	14
L	-	-	358~382	568~607	-	15
L	-	-	383~407	608~647	-	16
L	-	-	408~432	648~669	-	17
L	-	-	433~457	-	-	18
L	-	-	458~469	-	-	19
F	15	20	25	40	60	

Miniature Type - Wide Rails

H	6, 5	9	12	14	16	Number of Mounting Holes M
L	-	51~67	51~67	71~89	71~89	2
L	51~67	68~97	68~97	90~129	90~129	3
L	68~87	98~127	98~127	130~169	130~169	4
L	88~107	128~157	128~157	170~209	170~209	5
L	108~127	158~187	158~187	210~249	210~249	6
L	128~129	188~217	188~217	250~289	250~289	7
L	-	218~247	218~247	290~329	290~329	8
L	-	248~277	248~277	330~369	330~369	9
L	-	278~289	278~289	370~409	370~409	10
L	-	-	-	410~449	410~449	11
L	-	-	-	450~489	450~489	12
L	-	-	-	490~529	490~529	13
L	-	-	-	530~569	530~569	14
L	-	-	-	570~609	570~609	15
L	-	-	-	610~649	610~649	16
L	-	-	-	650~669	650~669	17
F	20	30	40			

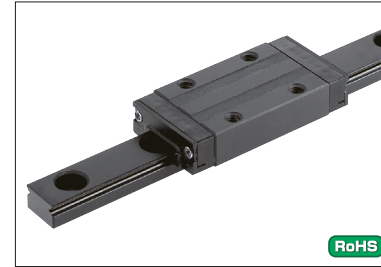
M (number of mounting holes) for H16 type will be Mx2 since there are two rows of mounting holes.
Min. length of L dimension varies depending on the number of blocks. See each product page for details.

Medium/Heavy Load Type

H	24, 28*1	28*2, 30	33, 36, 40	42, 45	Number of Mounting Holes M
L	101~131	-	-	-	2
L	132~191	160~199	160~201	201~279	3
L	192~251	200~259	202~261	281~343	4
L	252~311	260~319	262~321	344~423	5
L	312~371	320~379	322~381	424~503	6
L	372~431	380~439	382~441	504~583	7
L	432~491	440~499	442~501	584~663	8
L	492~551	500~559	502~561	664~743	9
L	552~611	560~619	562~621	744~823	10
L	612~671	620~679	622~681	824~903	11
L	672~731	680~739	682~741	904~983	12
L	732~791	740~799	742~801	984~1063	13
L	792~851	800~859	802~861	1064~1143	14
L	852~911	860~919	862~921	1144~1223	15
L	912~971	920~979	922~981	1224~1303	16
L	972~1031	980~1039	982~1041	1304~1383	17
L	1032~1091	1040~1099	1042~1101	1384~1463	18
L	1092~1151	1100~1159	1102~1161	1464~1543	19
L	1152~1211	1160~1219	1162~1221	1544~1623	20
L	1212~1271	1220~1279	1222~1281	1624~1703	21
L	1272~1331	1280~1339	1282~1341	1704~1783	22
L	1332~1391	1340~1399	1342~1401	1784~1863	23
L	1392~1451	1400~1459	1402~1461	1864~1943	24
L	1452~1511	1460~1519	1462~1521	1944~1959	25
L	1512~1571	1520~1579	1522~1581	-	26
L	1572~1631	1580~1639	1582~1641	-	27
L	1632~1691	1640~1699	1642~1701	-	28
L	1692~1751	1700~1759	1702~1761	-	29
L	1752~1811	1760~1819	1762~1821	-	30
L	1812~1871	1820~1879	1822~1881	-	31
L	1872~1931	1880~1939	1882~1941	-	32
L	1932~1959	1940~1959	1942~1959	-	33
F		60		80	

Min. length of L dimension varies depending on the number of blocks. See each product page for details.
*1. C-VALUE Super Heavy Load Applicable Dimension (P583)
*2. Medium/Heavy Load Applicable Dimension (P569-P580)

Linear Guides with LTBC Plating



Low Temperature Black Chrome Plated Linear Guide Features

LTBC Plating on linear guides is 5μm of fluoropolymer layer chemically deposited as black film on rails and blocks, and it has long-lasting rust prevention effect. The coating layer is immune to cracking from tight radii strike-folding and does not flake under repeated bending. Any superficial coating particles that may come off the rolling contact surfaces are mixed in with the grease and remain its lubricity. (Note) Surface treatment will not be applied to mounting holes of rails and blocks of low temperature black chrome plated linear guides.

Description of Low Temperature Black Chrome Plated Model Type:

For low temperature black chrome plated products, change the first letter of part numbers "S" to "R".

(Ex.)	[Standard]	[Low Temperature Black Chrome Plated Products]
	SEB10-115	RSEB10-115
	SSEB16-270	RSEB16-270
	SKR24-520	RKR24-520
	SSVR33-700	RSSVR33-700

The precision grade and standard type of the existing products and C-VALUE products are not available. Only the high grade type of the existing products is available.
Cannot be combined with Alteration WC (Parallel Use of 2 Rails).

Table: Low Temperature Black Chrome Plated Miniature Linear Guides

Rail	Block Length	Block Type	Catalog Page	Carbon Steel				Stainless Steel			
				1 block		2 blocks		1 block		2 blocks	
				Selectable	Configurable	Selectable	Configurable	Selectable	Configurable	Selectable	Configurable
Standard	Standard	Standard	P533	REB	REBL	RE2B	RE2BL	RSEB	RSEBL	RSE2B	RSE2BL
	Long	Standard	P539	RELB	RELBL	REL2B	REL2BL	RSELB	RSELBL	RSEL2B	RSEL2BL
Wide	Standard	Standard	P555	REBW	REBWL	RE2BW	RE2BWL	RSEBW	RSEBWL	RSE2BW	RSE2BWL
	Long	Standard	P563	RELBW	RELBWL	REL2BW	REL2BWL	RSELBW	RSELBWL	RSEL2BW	RSEL2BWL

Table: Low Temperature Black Chrome Plated Medium and Heavy Load Linear Guides

Rail	Block Length	Block Type	Catalog Page	Carbon Steel				Stainless Steel			
				1 block		2 blocks		1 block		2 blocks	
				Selectable	Configurable	Selectable	Configurable	Selectable	Configurable	Selectable	Configurable
Standard	Medium Load	Standard	P569, 589	RVR	RVRRL	RV2R	RV2RL	RSVR	RSVRRL	RSV2R	RSV2RL
		With Dowel Holes	P597	RVRN	RVRNL	RV2RN	RV2RNL	-	-	-	-
		Wide (Through Holes)	P569	RVW	RVWL	RV2W	RV2WL	-	-	-	-
		Wide (Tapped Holes)	P569	RVWT	RVWTL	RV2WT	RV2WTL	-	-	-	-
		Standard	P575, 589	RXR	RXRRL	RX2R	RX2RL	RSXR	RSXRRL	RSX2R	RSX2RL
Standard	Heavy Load	With Dowel Holes	P597	RXRN	RXRNL	RX2RN	RX2RNL	-	-	-	-
		Wide (Through Holes)	P575	RXW	RXWL	RX2W	RX2WL	-	-	-	-
		Wide (Tapped Holes)	P575	RXWT	RXWTL	RX2WT	RX2WTL	-	-	-	-

Price of LTBC Plating Surface Treatment (For low temperature black chrome plated products, add the prices below for surface treatment to the unit price of Linear Guides.)

Part Number	Type	H	L	Unit Price		Part Number	Type	H	L	Unit Price		Part Number	Type	H	L	Unit Price	
				Block 1 pc.	Block 2 pcs.					Block 1 pc.	Block 2 pcs.					Block 1 pc.	Block 2 pcs.
Miniature Linear Guides - Standard Rails	Page P533, P539	8	40~55			Miniature Type - Wide Rails	Page P555, P563	9	50~110			Medium/Heavy Load Type	Page P569, P575, P589, P597	24	100~220		
			56~70						111~140						221~280		
			71~85						141~170						281~340		
			86~100						171~200						341~400		
			101~115						201~230						401~460		
			116~130						231~260						461~520		
			35~75						261~290						521~580		
			76~95						50~110						581~640		
			96~115						111~140						641~700		
			116~135						141~170						701~760		
Miniature Linear Guides - Standard Rails	Page P533, P539	10	136~155			Miniature Type - Wide Rails	Page P555, P563	12	171~195			Medium/Heavy Load Type	Page P569, P575, P589, P597	28	160~280		
			156~175						171~200						281~340		
			176~195						201~230						341~400		
			196~215						231~260						401~460		
			216~235						261~290						461~520		
			236~255						291~320						521~580		
			256~275						70~150						581~640		
			45~95						151~190						641~700		
			96~120						191~230						701~760		
			121~145						231~270						761~820		
Miniature Linear Guides - Standard Rails	Page P533, P539	13	146~170			Miniature Type - Wide Rails	Page P555, P563	14	171~195			Medium/Heavy Load Type	Page P569, P575, P589, P597	33	160~280		
			171~195						191~230						281~340		
			196~220						231~260						341~400		
			221~245						261~290						401~460		
			246~270						291~320						461~520		
			271~295						321~345						521~580		
			296~320						346~370						581~640		
			321~345						371~395						641~700		
			346~370						396~420						701~760		
			371~395						421~445						761~820		
Miniature Linear Guides - Standard Rails	Page P533, P539	16	446~470			Miniature Type - Wide Rails	Page P555, P563	16	471~510			Medium/Heavy Load Type	Page P569, P575, P589, P597	33	160~280		
			471~510						511~550						281~340		