



# Miniature Linear Guides

## Long Blocks, Light Preload

= For customers using industry standard products =

frame-surrounded products are compliant with the industry standard specifications (Stainless Steel, Light Preload, High Grade Type). Select the block from this spec.

Similar Products Comparison Points | The industry standard Long Block Type. Select from Light Preload Types with superior precision and rigidity.

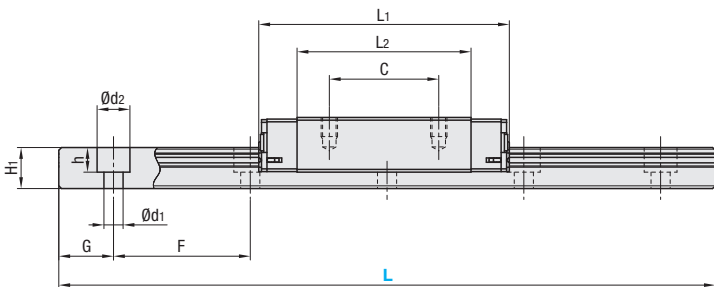
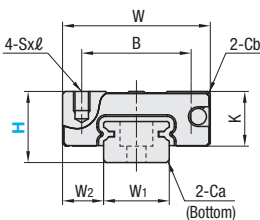
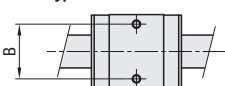
### Industry Standard



RoHS 10

- This Type has the same fitting dimensions as the other company products, and thus, can be substituted for them.
- Blocks and rails are not sold as separate items. This Type has guaranteed radial clearances and accuracies as sets of blocks and rails.

#### H6 Type



For L Configurable, G dimensions differ from those shown in the table below. For details, see P.531.

#### Precautions for Use

- Blocks are equipped with retainers (wire) to prevent balls from falling off. For how to handle the blocks, see P.525.
- Radial clearances and accuracies are not guaranteed if the blocks and rails are interchanged from the original set combinations.
- Straight grooves are provided on datum planes. Be sure to match the datum lines when using.
- Rails cannot be connected end to end.
- The accuracy of Linear Guides is guaranteed after mounting the rail (after fastening screws on the rail and pushing it onto the datum plane).
- Minor bending of the rail will be adjusted after being mounted and will not affect the performance.

#### Accessory

- H6 comes with Number 0, Class 1 Phillips button head screws (M2x6).
- H8 comes with cap screws (M2x6).

#### Others

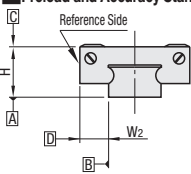
- Filled with Lithium soap based grease (Multemp Grease PS2 by Kyodo Yushi Co., Ltd.).
- For operating life calculation, see P.527.
- For operating life calculations, use our free calculation software from [http://download.misumi.jp/mol/fa\\_soft.html](http://download.misumi.jp/mol/fa_soft.html).
- The MX type is greased with a lithium complex grease (TOUGHLIX GREASE MP2, made by JXTG Nippon Oil & Energy Corporation).

Part Number				L	Block Dimension								Guide Rail Dimension							
Type	MX		H		W	L1	B	C	Sxℓ	L2	K	Cb	W1	W2	H1	Ca	Counterbored Hole d1xd2xh	F	G	
Ⓜ Dimensions in ( ) are for 2-Block Type.				6	40-100 (70)	12	21	8	-	M2x1.5	13.3	4.5	0.3	5	3.5	4	0.3	2.4x3.5x1	15	5
<div>Stainless Steel</div> <div>Industry Standard Specifications</div> <div>SSELB    SSELBV    SSELBZ</div> <div>SSEL2B   SSEL2BV   SSEL2BZ</div> <div>SSELBL   SSELBLV   SSELBLZ</div> <div>SSEL2BL   SSEL2BLV   SSEL2BLZ</div>				8	40-130 (85)	17	32	12	13	M2x2.5	22	6.5	0.3	7	5	4.7	0.3	2.4x4.2x2.3	15	5
				10	55-275 (95)	20	40	15	16	M3x3	29	7.8	0.3	9	5.5	5.5	0.3	3.5x6x3.5	20	7.5
				13	70-470 (120)	27	45.8	20	20	M3x3.5	31.8	10	0.5	12	7.5	7.5	0.5	3.5x6x4.5	25	10
				16	110-670 (150)	32	58.3	25	25	M3x4	43.3	12	0.5	15	8.5	9.5	0.5	3.5x6x4.5	40	15
				20	160-700 (220)	40	67.7	30	30	M4x6	52.3	15	0.5	20	10	11	0.5	6x9.5x5.5	60	20
<div>Carbon Steel</div> <div>SELB    SELBV    SELBZ</div> <div>SEL2B   SEL2BV   SEL2BZ</div> <div>SELBL   SELBLV   SELBLZ</div> <div>SEL2BL   SEL2BLV   SEL2BLZ</div>				Blank: None -MX: Provided		(for stainless steel only)														

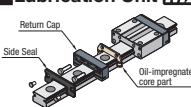
kgf=Nx0.101972									
H	Basic Load Rating C (Dynamic) kN	Co (Static) kN	MA N-m	Me N-m	Mc N-m	Block kg	Guide Rail kg/m	Mass	
6	0.6	1.0	1.8	1.8	2.3	0.005	0.13		
8	1.6	2.4	7.5	7.5	9.0	0.016	0.19		
10	2.2	3.7	12.3	12.3	13.0	0.03	0.31		
13	3.5	5.3	24.5	26.4	32.3	0.06	0.61		
16	5.8	8.7	57.8	62.6	67.6	0.10	1.02		
20	7.2	13.5	80.7	80.7	138.2	0.18	1.65		



#### Preload and Accuracy Standards



#### Lubrication Unit MX



Specifications	Light Preload, High Grade	Light Preload, Precision Grade	Slight Clearance Standard Grade
Radial Clearance	-3~0	0~+15	0~+15
Height H Tolerance	±20	±10	±20
Pair Variation of Height H	15	7	40
Width W2 Tolerance	±25	±15	±25
Pair Variation of Width W2	20	10	40
Running Parallelism of Plane C against Plane A	See P.525		
Running Parallelism of Plane D against Plane A	See P.525		

Slight Clearance Type has clearance (Gap) between rails and blocks. If precision / rigidity is required, select Light Preload Type.

The same block size as existing products!

The oil-impregnated porous core part has been built into the product.

- Advantages of the Lubrication Unit MX:
  - Provides long-term maintenance-free operation.
  - Reduces maintenance costs.

H	L	Unit Price							
		Stainless Steel				Carbon Steel			
		SSELB	SSEL2B	SSELBZ	SSEL2BZ	SELB	SEL2B	SELBZ	SEL2BZ
6	40	-	-	-	-	-	-	-	-
	55	-	-	-	-	-	-	-	-
	70	-	-	-	-	-	-	-	-
	85	-	-	-	-	-	-	-	-
	100	-	-	-	-	-	-	-	-
8	40	-	-	-	-	-	-	-	-
	55	-	-	-	-	-	-	-	-
	70	-	-	-	-	-	-	-	-
	85	-	-	-	-	-	-	-	-
	100	-	-	-	-	-	-	-	-
10	115	-	-	-	-	-	-	-	-
	130	-	-	-	-	-	-	-	-
	145	-	-	-	-	-	-	-	-
	170	-	-	-	-	-	-	-	-
	195	-	-	-	-	-	-	-	-
13	220	-	-	-	-	-	-	-	-
	245	-	-	-	-	-	-	-	-
	270	-	-	-	-	-	-	-	-
	295	-	-	-	-	-	-	-	-
	320	-	-	-	-	-	-	-	-
16	345	-	-	-	-	-	-	-	-
	370	-	-	-	-	-	-	-	-
	395	-	-	-	-	-	-	-	-
	420	-	-	-	-	-	-	-	-
	445	-	-	-	-	-	-	-	-
20	470	-	-	-	-	-	-	-	-
	510	-	-	-	-	-	-	-	-
	550	-	-	-	-	-	-	-	-
	590	-	-	-	-	-	-	-	-
	630	-	-	-	-	-	-	-	-
20	670	-	-	-	-	-	-	-	-
	160	-	-	-	-	-	-	-	-
	220	-	-	-	-	-	-	-	-
	280	-	-	-	-	-	-	-	-
	340	-	-	-	-	-	-	-	-
20	400	-	-	-	-	-	-	-	-
	460	-	-	-	-	-	-	-	-
	520	-	-	-	-	-	-	-	-
	580	-	-	-	-	-	-	-	-
	640	-	-	-	-	-	-	-	-
20	700	-	-	-	-	-	-	-	-

#### L Dimension Configurable Type (1mm Increment)

H	Unit Price			
	Stainless Steel		Carbon Steel	
	SSELBL	SSEL2BL	SELBL	SEL2BL
	SSELBLZ	SSEL2BLZ	SELBLZ	SEL2BLZ
6	-	-	-	-
8	-	-	-	-
10	-	-	-	-
13	-	-	-	-
16	-	-	-	-
20	-	-	-	-

For calculation of L Dimension Configurable Type (1mm Increment), add the above amount to the unit price of the Selectable Type longer than, and closest to this L Dimension Configurable Type.



Ordering Example

Part Number - L

SSELB10 - 275  
SSELB-MX10 - 275  
RSELB10 - 75  
SSELB10L - 75  
SSELB10G - 75

(With Lubrication Unit)  
(LTBC Plating)  
(L Type Greased)  
(G Type Greased)

LTBC Plating and various Grease types available as alternative.

P.531



Alterations

Part Number - L - (MC, RLC, LLC, WC, B3, B4)

SSEL2BL16 - 450 - MC

Alterations	Code	Spec.			
Tapped Hole	MC	Changes the rail mounting holes from counterbored holes to tapped holes.	H	MC	H
			6	M2.6	13
			8	M3	16
			10	M4	20
Rail End Cut:	LLC	Cuts rail ends. Ordering Code LLC	H	L	Cut
			10	2.5	N
			13	5	5
			16	10	
Left End Cut	RLC				
Right End Cut	RLC				
Parallel Use of 2 Rails	WC	Pair variation of Height H between 2 rails is set within 15µm. Rails are shipped in pairs. Specify the actual rail quantity (even number) to order, not "pairs". Applicable to High Grade Type only. Not applicable to low temperature chrome plated products.			
3-Block Specifications	B3	Add 2 blocks to 1-block product to ship as 3-block separate item. There are restrictions for the L dimension length. See "Selectable Shortest Rail Length" for details. Selection Example: SSELB10-215-B3			
4-Block Specifications	B4	Add 3 blocks to 1-block product to ship as 4-block separate item. There are restrictions for the L dimension length. See "Selectable Shortest Rail Length" for details. Selection Example: SELB213-220-B4			

#### Additional Block Price (Same Price for High/Standard Grade)

H	B3: Price Adder		B4: Price Adder	
	Stainless Steel	Carbon Steel	Stainless Steel	Carbon Steel
8	-	-	-	-
10	-	-	-	-
13	-	-	-	-
16	-	-	-	-
20	-	-	-	-

Not applicable to H6.

#### Selectable Shortest Rail Length for B3/B4

H	B3 (3-block)		B4 (4-block)	
	Stainless Steel	Carbon Steel	Stainless Steel	Carbon Steel
6	85	-	-	-
8	115	-	-	-
10	155	195	-	-
13	170	220	-	-
16	230	270	-	-
20	280	340	-	-

#### Options for Linear Guide

Position Retaining Parts	Block / Rail Fixing Parts
Rail Push Plates P.607	Rail Push Plates P.612
Rail Height Adjusting Blocks P.609	Linear Lock P.613
Block Derailment Prevention Parts Stopper Bolts P.612	Linear Guide Lock Units P.614