

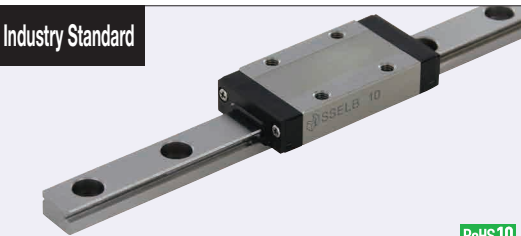


Miniature Linear Guides

Long Blocks, Light Preload

Similar Products Comparison Points | The industry standard Long Block Type. Select from Light Preload Types with superior precision and rigidity.

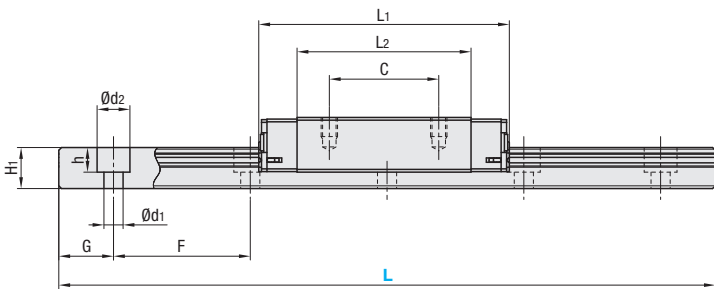
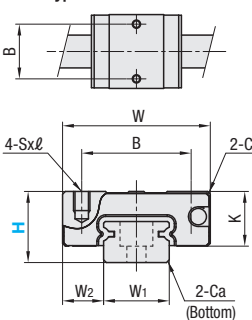
Industry Standard



RoHS 10

- This Type has the same fitting dimensions as the other company products, and thus, can be substituted for them.
- Blocks and rails are not sold as separate items. This Type has guaranteed radial clearances and accuracies as sets of blocks and rails.

H6 Type



For L Configurable, G dimensions differ from those shown in the table below. For details, see P.531.

Precautions for Use

- Blocks are equipped with retainers (wire) to prevent balls from falling off. For how to handle the blocks, see P.525.
- Radial clearances and accuracies are not guaranteed if the blocks and rails are interchanged from the original set combinations.
- Straight grooves are provided on datum planes. Be sure to match the datum lines when using.
- Rails cannot be connected end to end.
- The accuracy of Linear Guides is guaranteed after mounting the rail (after fastening screws on the rail and pushing it onto the datum plane). Minor bending of the rail will be adjusted after being mounted and will not affect the performance.

Accessory

- H6 comes with Number 0, Class 1 Phillips button head screws (M2x6).
- H8 comes with cap screws (M2x6).

Others

- Filled with Lithium soap based grease (Multemp Grease PS2 by Kyodo Yushi Co., Ltd.).
- For operating life calculation, see P.527.
- For operating life calculations, use our free calculation software from http://download.misumi.jp/mol/fa_soft.html.
- The MX type is greased with a lithium complex grease (TOUGHLIX GREASE MP2, made by JXTG Nippon Oil & Energy Corporation).

Part Number			L	Block Dimension								Guide Rail Dimension								
Type	MX	H		W	L ₁	B	C	Sxℓ	L ₂	K	Cb	W ₁	W ₂	H ₁	Ca	Counterbored Hole d ₁ x d ₂ x h	F	G		
SSELB SSEL2B SSELBL SSEL2BL	SSELBV SSEL2BV SSELBLV SSEL2BLV	SSELBZ SSEL2BZ SSELBLZ SSEL2BLZ	Blank: None -MX: Provided	6	40~100 (70)	12	21	8	-	M2x1.5	13.3	4.5	0.3	5	3.5	4	0.3	2.4x3.5x1	15	5
				8	40~130 (85)	17	32	12	13	M2x2.5	22	6.5	0.3	7	5	4.7	0.3	2.4x4.2x2.3	15	5
				10	55~275 (95)	20	40	15	16	M3x3	29	7.8	0.3	9	5.5	5.5	0.3	3.5x6x3.5	20	7.5
				13	70~470 (120)	27	45.8	20	20	M3x3.5	31.8	10	0.5	12	7.5	7.5	0.5	3.5x6x4.5	25	10
				16	110~670 (150)	32	58.3	25	25	M3x4	43.3	12	0.5	15	8.5	9.5	0.5	3.5x6x4.5	40	15
				20	160~700 (220)	40	67.7	30	30	M4x6	52.3	15	0.5	20	10	11	0.5	6x9.5x5.5	60	20

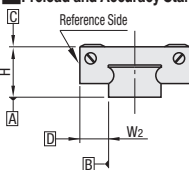
📏 Dimensions in () are for 2-Block Type.

Dimensions in () are for 2-Block Type.

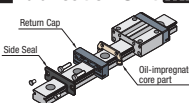
H	Basic Load Rating		Allowable Static Moment		Mass	
	C (Dynamic) kN	Co (Static) kN	MA N-m	Me N-m	Mc N-m	Block kg Guide Rail kg/m
6	0.6	1.0	1.8	1.8	2.3	0.005 0.13
8	1.6	2.4	7.5	7.5	9.0	0.016 0.19
10	2.2	3.7	12.3	12.3	13.0	0.03 0.31
13	3.5	5.3	24.5	26.4	32.3	0.06 0.61
16	5.8	8.7	57.8	62.6	67.6	0.10 1.02
20	7.2	13.5	80.7	80.7	138.2	0.18 1.65



Preload and Accuracy Standards



Lubrication Unit MX



Specifications	Light Preload, High Grade	Light Preload, Precision Grade	Slight Clearance Standard Grade
Radial Clearance	-3~0	0~+15	0~+15
Height H Tolerance	±20	±10	±20
Pair Variation of Height H	15	7	40
Width W2 Tolerance	±25	±15	±25
Pair Variation of Width W2	20	10	40
Running Parallelism of Plane C against Plane A	See P.525		
Running Parallelism of Plane D against Plane A	See P.525		

Slight Clearance Type has clearance (Gap) between rails and blocks. If precision / rigidity is required, select Light Preload Type.

The same block size as existing products!

The oil-impregnated porous core part has been built into the product.

- Advantages of the Lubrication Unit MX:
 - Provides long-term maintenance-free operation.
 - Reduces maintenance costs.

H	L	Unit Price			
		SSELB	SSEL2B	SSELBZ	SSEL2BZ
6	40	-	-	-	-
	55	-	-	-	-
	70	-	-	-	-
	85	-	-	-	-
	100	-	-	-	-
	115	-	-	-	-
8	40	-	-	-	-
	55	-	-	-	-
	70	-	-	-	-
	85	-	-	-	-
	100	-	-	-	-
	115	-	-	-	-
10	130	-	-	-	-
	145	-	-	-	-
	160	-	-	-	-
	175	-	-	-	-
	190	-	-	-	-
	205	-	-	-	-
13	220	-	-	-	-
	235	-	-	-	-
	250	-	-	-	-
	265	-	-	-	-
	280	-	-	-	-
	295	-	-	-	-
16	310	-	-	-	-
	325	-	-	-	-
	340	-	-	-	-
	355	-	-	-	-
	370	-	-	-	-
	385	-	-	-	-
20	400	-	-	-	-
	415	-	-	-	-
	430	-	-	-	-
	445	-	-	-	-
	460	-	-	-	-
	475	-	-	-	-

L Dimension Configurable Type (1mm Increment)

H	Unit Price	
	SSELBL SSELBLZ	SSEL2BL SSEL2BLZ
6		
8		
10		
13		
16		
20		

For calculation of L Dimension Configurable Type (1mm Increment), add the above amount to the unit price of the Selectable Type longer than, and closest to this L Dimension Configurable Type.



Ordering Example

Part Number - L

- SSELB10 - 275 (With Lubrication Unit)
- SSELB-MX10 - 275 (LTBC Plating)
- RSELB10 - 75 (L Type Greased)
- SSELB10L - 75 (G Type Greased)
- SSELB10G - 75 (G Type Greased)

LTBC Plating and various Grease types available as alternative.



P.531



Alterations

Part Number - L - (MC, RLC, LLC, WC, B3, B4)

SSEL2BL16 - 450 - MC

Alterations	Code	Spec.																		
<div>Tapped Hole</div> <div></div>	MC	Changes the rail mounting holes from counterbored holes to tapped holes.		<table><tr><td>H</td><td>MC</td><td>H</td><td>MC</td></tr><tr><td>6</td><td>M2.6</td><td>13</td><td>M4</td></tr><tr><td>8</td><td>M3</td><td>16</td><td>M5</td></tr><tr><td>10</td><td>M4</td><td>20</td><td>M6</td></tr></table>	H	MC	H	MC	6	M2.6	13	M4	8	M3	16	M5	10	M4	20	M6
H	MC	H	MC																	
6	M2.6	13	M4																	
8	M3	16	M5																	
10	M4	20	M6																	
<div>Rail End Cut:</div> <div></div> <div>Rail is cut with the product ID facing out (datum on other side).</div>	<div>Left End Cut</div> <div>LLC</div> <div>Right End Cut</div> <div>RLC</div>	Cuts rail ends. Ordering Code LLC		<table><tr><th>H</th><th>L</th><th>Cut</th><th>N</th></tr><tr><td>10</td><td>2.5</td><td rowspan="3">5</td><td></td></tr><tr><td>13</td><td>5</td></tr><tr><td>16</td><td>10</td></tr></table> <div>⚠ Applicable to Selectable Type only. ⚠ Overall length will be shorter by cutting. ⚠ Not applicable to H6, 8, 20.</div>	H	L	Cut	N	10	2.5	5		13	5	16	10				
H	L	Cut	N																	
10	2.5	5																		
13	5																			
16	10																			
Parallel Use of 2 Rails	WC	Pair variation of Height H between 2 rails is set within 15µm. Rails are shipped in pairs. ⚠ Specify the actual rail quantity (even number) to order, not "pairs". ⚠ Applicable to High Grade Type only. ⚠ Not applicable to low temperature chrome plated products.																		
3-Block Specifications	B3	Add 2 blocks to 1-block product to ship as 3-block separate item. ⚠ There are restrictions for the L dimension length. See "Selectable Shortest Rail Length" for details. Selection Example: SSELB10-215-B3																		
4-Block Specifications	B4	Add 3 blocks to 1-block product to ship as 4-block separate item. ⚠ There are restrictions for the L dimension length. See "Selectable Shortest Rail Length" for details. Selection Example: SSELB213-220-B4																		

Additional Block Price (Same Price for High/Standard Grade)

H	B3: Price Adder		B4: Price Adder	
	Standard	Standard MX	Standard	Standard MX
8				
10				
13				
16				
20				

Not applicable to H6.

Selectable Shortest Rail Length for B3/B4

H	B3 (3-block)		B4 (4-block)	
	Standard	Standard MX	Standard	Standard MX
6	85			
8	115			
10	155		195	
13	170		220	
16	230		270	
20	280		340	

Options for Linear Guide

Position Retaining Parts	Block / Rail Fixing Parts
Rail Height Adjusting Blocks	Linear Lock
Block Derailment Prevention Parts	Linear Guide Lock Units
Stopper Bolts	