



Miniature Linear Guides

Long Blocks with Dowel Holes, Light Preload

Similar Products Comparison Points | MISUMI original specifications with dowel holes. Requires less time for assembly and has better repeatability.

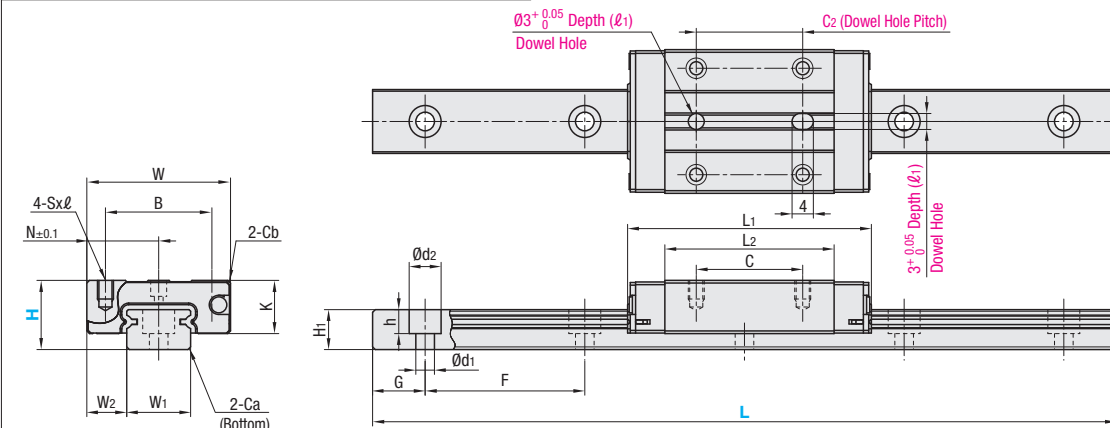
MISUMI Original



Material Hardness	Type Light Preload High Grade	MX (Lubrication Unit)	L Dimension	Number of Blocks
Standard Materials	Stainless Steel 56HRC~	Blank: None -MX: Provided	Selectable	1
			2	2
			Configurable	1
			2	2
Carbon Steel 58HRC~	SELBN SEL2BN SELBNL SEL2BNL		Selectable	1
			2	2
			Configurable	1
			2	2

Heat Resistant Temperature: -20 ~ 80°C

Blocks and rails are not sold as separate items. This Type has guaranteed radial clearances and accuracies as sets of blocks and rails.

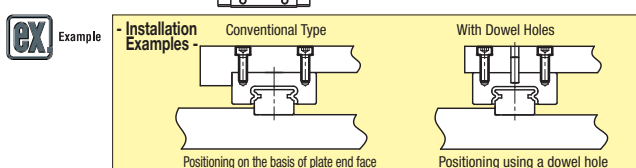


For L Configurable, G dimensions differ from those shown in the table below. For details, see P531.

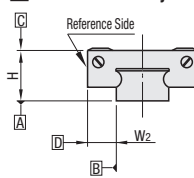
- Precautions for Use
 - Blocks are equipped with retainers (wire) to prevent balls from falling off. For how to handle the blocks, see P525.
 - Radial clearances and accuracies are not guaranteed if the blocks and rails are interchanged from the original set combinations.
 - Straight grooves are provided on datum planes. Be sure to match the datum lines when using.
 - Rails cannot be connected end to end.
 - The accuracy of Linear Guides is guaranteed after mounting the rail (after fastening screws on the rail and pushing it onto the datum plane).
 - Minor bending of the rail will be adjusted after being mounted and will not affect the performance.
- Accessories
 - H8 comes with cap screws (M2x6).
- Others
 - Filled with Lithium soap based grease (Multemp Grease PS2 by Kyodo Yushi Co., Ltd.).
 - For operating life calculation, see P527.
 - For operating life calculations, use our free calculation software from http://download.misumi.jp/mol/fa_soft.html.
 - The MX type is greased with a lithium complex grease (TOUGHLIX GREASE MP2, made by JXTG Nippon Oil & Energy Corporation).

Part Number			L	Block Dimension								Dowel Hole Dimensions				Guide Rail Dimension							
Type	MX	H		W	L ₁	B	C	Sxℓ	L ₂	K	Cb	N	C ₂	(ℓ ₁)	W ₁	W ₂	H ₁	Ca	Counterbored Hole d ₁ x d ₂ h	F	G		
⚡ Dimensions in () are for 2-Block Type.			-	8	40~130 (100)	17	32	12	13	M2x2.5	22	6.5	0.3	8.5	13	2	7	5	4.7	0.3	2.4x4.2x2.3	15	5
Stainless Steel Standard Specifications SSELBN SSEL2BN SSELBNL SSEL2BNL	Carbon Steel	Blank: None -MX: Provided (for stainless steel only)	10	55~275 (115)	20	40	15	16	M3x3	29	7.8	0.3	10	16	2.5	9	5.5	5.5	0.3	3.5x6x3.5	20	7.5	
			13	70~470 (120)	27	45.8	20	20	M3x3.5	31.8	10	0.5	13.5	20	3	12	7.5	7.5	0.5	3.5x6x4.5	25	10	
			16	110~670 (150)	32	58.3	25	25	M3x4	43.3	12	0.5	16	25	4	15	8.5	9.5	0.5	3.5x6x4.5	40	15	
			20	160~700 (220)	40	67.7	30	30	M4x6	52.3	15	0.5	20	30	4	20	10	11	0.5	6x9.5x5.5	60	20	

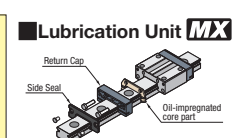
kgf=Nx0.101972	
H	Basic Load Rating C (Dynamic) kN
8	1.6
10	2.2
13	3.5
16	5.8
20	7.2
H	Allowable Static Moment MA N·m
8	7.5
10	12.3
13	24.5
16	57.8
20	80.7
H	Mass Block kg
8	0.016
10	0.03
13	0.06
16	0.10
20	0.18



Preload and Accuracy Standards



Specifications	Light Preload, High Grade
Radial Clearance	-3~0
Height H Tolerance	±20
Pair Variation of Height H	15
Width W ₂ Tolerance	±25
Pair Variation of Width W ₂	20
Running Parallelism of Plane C against Plane A	See P525
Running Parallelism of Plane D against Plane A	See P525



The same block size as existing products!
The oil-impregnated porous core part has been built into the product.
● Advantages of the Lubrication Unit MX:
Provides long-term maintenance-free operation.
Reduces maintenance costs.

= For customers selecting MISUMI original specifications =
frame-surrounded products are compliant with the standard specifications (Stainless Steel, Light Preload, High Grade Type).
Select the block from this spec.



Ordering
Example

Part Number - L
SSELBN10 - 275
SSELBN-MX10 - 275 (With Lubrication Unit)
SSELBN10L - 75 (L Type Greased)
SSELBN10G - 75 (G Type Greased)
Alternative grease types available.
P531



Alterations

Part Number - L - (MC, RLC, LLC, B3, B4)
SSEL2BN16 - 430 - MC - RLC

Alterations	Code	Spec.
Tapped Hole	MC	Changes the rail mounting holes from counterbored holes to tapped holes. H MC 8 M3 10 M4 13 M5 16 M5 20 M6
Rail End Cut	Left End Cut LLC Right End Cut RLC	Cuts rail ends. Ordering Code LLC H L Cut N 10 2.5 5 13 5 5 16 10 5 Applicable to Selectable Type only. Overall length will be shorter by cutting. Not applicable to H8/20
3-Block Specifications	B3	Add 2 blocks to 1-block product to ship as 3-block separate item. There are restrictions for the L dimension length. See "Selectable Shortest Rail Length" for details. Selection Example: SELBN10-195-B3
4-Block Specifications	B4	Add 3 blocks to 1-block product to ship as 4-block separate item. There are restrictions for the L dimension length. See "Selectable Shortest Rail Length" for details. Selection Example: SELBN16-510-B4

■ Additional Block Price							■ Selectable Shortest Rail Length for B3/B4			
H	B3: Price Adder			B4: Price Adder			H	B3 (3-block)	B4 (4-block)	
	Stainless Steel	Carbon Steel	MX	Stainless Steel	Carbon Steel	MX				
8			-	-	-	-	8	115	-	
10							10	155	195	
13							13	170	220	
16							16	230	270	
20							20	280	340	

Not applicable to H8 B4 (4 blocks)

Options for Linear Guide

Position Retaining Parts	Block / Rail Fixing Parts
Rail Push Plates P607	Linear Lock P612
Rail Height Adjusting Blocks P609	Linear Guide Lock Units P613
Block Derailment Prevention Parts Stopper Bolts P612	Linear Guide Lock Units P614

L Dimension Configurable Type (1mm Increment)

H	Unit Price			
	Stainless Steel SSELBNL	Stainless Steel SSEL2BNL	Carbon Steel SELBNL	Carbon Steel SEL2BNL
8				
10				
13				
16				
20				

For calculation of L Dimension Configurable Type (1mm Increment), add the above amount to the unit price of the Selectable Type longer than, and closest to this L Dimension Configurable Type.