



# Miniature Linear Guides

## Short Blocks, Light Preload / Slight Clearance

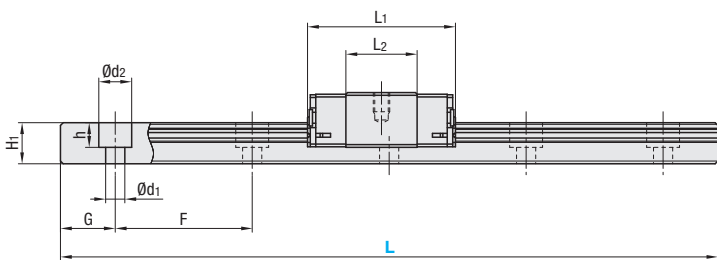
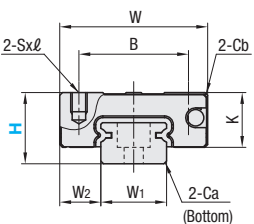
■ **Features:** Short Block Type of industry-standard spec. **20% more compact** than standard blocks.

### Industry Standard



RoHS10

- ⚡ This Type has the same fitting dimensions as the other company products, and thus, can be substituted for them.
- ⚡ Blocks and rails are not sold as separate items. This Type has guaranteed radial clearances and accuracies as sets of blocks and rails.



⚡ For L Configurable, G dimensions differ from those shown in the table below. For details, see **P531**

### Precautions for Use

- ⚡ Blocks are equipped with retainers (wire) to prevent balls from falling off. For how to handle the blocks, see **P525**.
- ⚡ Radial clearances and accuracies are not guaranteed if the blocks and rails are interchanged from the original set combinations. Straight grooves are provided on datum planes. Be sure to match the datum lines when using.
- ⚡ Rails cannot be connected end to end.
- ⚡ The accuracy of Linear Guides is guaranteed after mounting the rail (after fastening screws on the rail and pushing it onto the datum plane).
- Minor bending of the rail will be adjusted after being mounted and will not affect the performance.

### Accessory

- H8 comes with cap screws (M2x6).

### Others

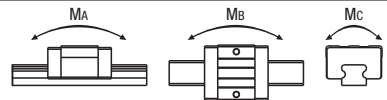
- Filled with Lithium soap based grease (Multemp Grease PS2 by Kyodo Yushi Co., Ltd.). For operating life calculation, see **P527**.
- For operating life calculations, use our free calculation software from [http://download.misumi.jp/mol/fa\\_soft.html](http://download.misumi.jp/mol/fa_soft.html).
- The MX type is greased with a lithium complex grease (TOUGHLIX GREASE MP2, made by JXTG Nippon Oil & Energy Corporation).

Part Number			L	Block Dimension							Guide Rail Dimension							
Type	MX	H		W	L <sub>1</sub>	B	Sxℓ	L <sub>2</sub>	K	Cb	W <sub>1</sub>	W <sub>2</sub>	H <sub>1</sub>	Ca	Counterbored Hole d1xd2xh	F	G	
🔌Dimensions in ( ) are for 2-Block Type.																		
Stainless Steel	-	8	40~130 (55)	17	19.6	12	M2x2.5	9.6	6.5	0.3	7	5	4.7	0.3	2.4x4.2x2.3	15	5	
Industry Standard Specifications	SSEBSZ SSE2BSZ SSEBSLZ SSE2BSLZ	Blank: None -MX: Provided (for stainless steel only)	10	35~275 (75)	20	22.9	15	M3x3	11.9	7.8	0.3	9	5.5	5.5	0.3	3.5x6x3.5	20	7.5
Carbon Steel			13	45~470 (95)	27	27	20	M3x3.5	13	10	0.5	12	7.5	7.5	0.5	3.5x6x4.5	25	10
SEBS SE2BS SEBSL SE2BSL			16	70~670 (110)	32	32.7	25	M3x4	17.7	12	0.5	15	8.5	9.5	0.5	3.5x6x4.5	40	15

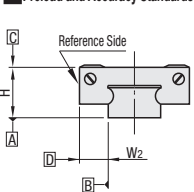
kgf=Nx0.101972

Unit: μm

Basic Load Rating		Allowable Static Moment		Mass	
H	C (Dynamic) kN	Co (Static) kN	MA N·m	Ms N·m	Mc N·m
8	0.79	1.27	1.9	1.6	4.6
10	1.16	1.68	3.1	2.6	7.9
13	1.63	2.38	5.2	4.4	14.8
16	3.08	4.23	12.3	10.3	32.6



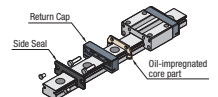
### Preload and Accuracy Standards



Specifications	Light Preload, High Grade	Slight Clearance, Standard Grade
Radial Clearance	~3~0	0~+15
Height H Tolerance	±20	±20
Pair Variation of Height H	15	40
Width W2 Tolerance	±25	±25
Pair Variation of Width W2	20	40
Running Parallelism of Plane C against Plane A	See <b>P525</b>	
Running Parallelism of Plane D against Plane A		

⚡ Slight Clearance Type has clearance (Gap) between rails and blocks. If precision / rigidity is required, select Light Preload Type.

### Lubrication Unit MX



**The same block size as existing products!**

The oil-impregnated porous core part has been built into the product.

- Advantages of the Lubrication Unit MX:
  - Provides long-term maintenance-free operation.
  - Reduces maintenance costs.

= For customers using industry standard products =

□ frame-surrounded products are compliant with the industry standard specifications (Stainless Steel, Light Preload, High Grade Type). Select the block from this spec.



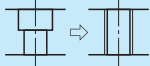
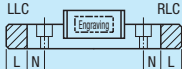
Ordering Example

Part Number - L  
**SSE2BS10** - **275**  
**SSEBN-MX10** - **275** (With Lubrication Unit)  
**SSE2BS10L** - **175** (L Type Greased)  
**SSE2BS10G** - **175** (G Type Greased)  
Alternative grease types available. **P531**



Alterations

Part Number - L - (MC, RLC, LLC, B3, B4)  
**SSE2BSL16** - **450** - **MC**

Alterations	Code	Spec.												
<p>Tapped Hole</p> 	<b>MC</b>	<p>Changes the rail mounting holes from counterbored holes to tapped holes.</p> <table><tr><td>H</td><td>MC</td></tr><tr><td>8</td><td>M3</td></tr><tr><td>10</td><td>M4</td></tr><tr><td>13</td><td></td></tr><tr><td>16</td><td>M5</td></tr></table>	H	MC	8	M3	10	M4	13		16	M5		
H	MC													
8	M3													
10	M4													
13														
16	M5													
<p>Rail End Cut</p> 	<p>Left End Cut <b>LLC</b></p> <p>Right End Cut <b>RLC</b></p>	<p>Cuts rail ends. Ordering Code: LLC</p> <table><tr><td>H</td><td>L Cut</td><td>N</td></tr><tr><td>10</td><td>2.5</td><td></td></tr><tr><td>13</td><td>5</td><td>5</td></tr><tr><td>16</td><td>10</td><td></td></tr></table> <ul style="list-style-type: none"><li>⚡ Applicable to Selectable Type only.</li><li>⚡ Overall length will be shorter by cutting.</li><li>⚡ Not applicable to H8.</li><li>⚡ Not applicable to L35 of H10 and L45 of H13.</li></ul>	H	L Cut	N	10	2.5		13	5	5	16	10	
H	L Cut	N												
10	2.5													
13	5	5												
16	10													
<p>3-Block Specifications</p>	<b>B3</b>	<p>Add 2 blocks to 1-block product to ship as 3-block separate item.</p> <ul style="list-style-type: none"><li>⚡ There are restrictions for the L dimension length. See "Selectable Shortest Rail Length" for details. Selection Example: SSEBS10-120-B3</li></ul>												
<p>4-Block Specifications</p>	<b>B4</b>	<p>Add 3 blocks to 1-block product to ship as 4-block separate item.</p> <ul style="list-style-type: none"><li>⚡ There are restrictions for the L dimension length. See "Selectable Shortest Rail Length" for details. Selection Example: SSEBS16-190-B4</li></ul>												

### Additional Block Price (Same Price for High/Standard Grade)

B3: Price Adder		B4: Price Adder	
H	Stainless Steel	Carbon Steel	MX
8			
10			
13			
16			

### Selectable Shortest Rail Length for B3/B4

H	B3 (3-block)	B4 (4-block)
8	85	100
10	95	135
13	120	145
16	150	190

### Options for Linear Guide

Position Retaining Parts	Block / Rail Fixing Parts
 P607 P609	 P612 P613
 P609	 P612
 P612	 P614