



# Miniature Linear Guides

## Short Blocks with Dowel Holes, Light Preload

■ **Features:** MISUMI original specifications with dowel holes. Requires less time for assembly and has better repeatability.

**MISUMI Original**

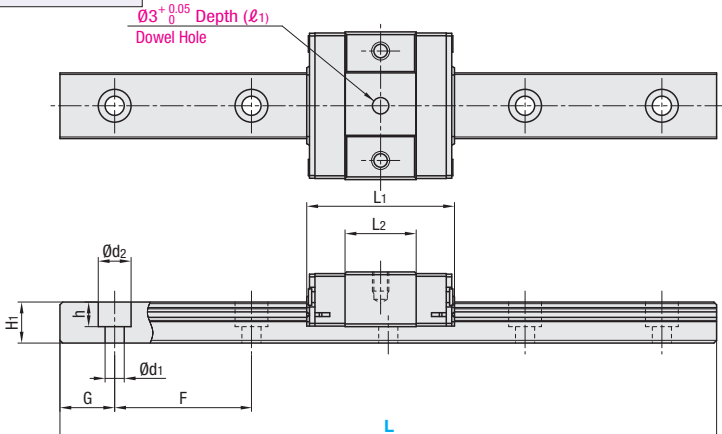
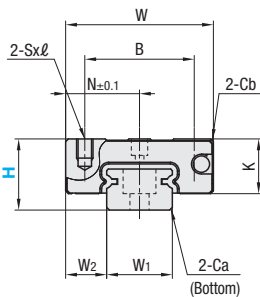


⚠ Blocks and rails are not sold as separate items. This Type has guaranteed radial clearances and accuracies as sets of blocks and rails.

M Material H Hardness	Type High Grade	MX (Lubrication Unit)	L Dimension	Number of Blocks
Stainless Steel 56HRC~	SSEBSN	Blank: None -MX: Provided	Selectable	1
	SSE2BSN			2
	SSEBSNL		Configurable	1
	SSE2BSNL			2

Heat Resistant Temperature: -20 ~ 80°C

Ø3<sup>+0.05</sup><sub>0</sub> Depth (ℓ<sub>1</sub>)  
Dowel Hole



⚠ For L Configurable, G dimensions differ from those shown in the table below. For details, see P. 531.

### ■ Precautions for Use

- ⚠ Blocks are equipped with retainers (wire) to prevent balls from falling off. For how to handle the blocks, see P. 525.
- ⚠ Radial clearances and accuracies are not guaranteed if the blocks and rails are interchanged from the original set combinations.
- ⚠ Straight grooves are provided on datum planes. Be sure to match the datum lines when using.
- ⚠ Rails cannot be connected end to end.
- ⚠ The accuracy of Linear Guides is guaranteed after mounting the rail (after fastening screws on the rail and pushing it onto the datum plane).
- Minor bending of the rail will be adjusted after being mounted and will not affect the performance.

### ■ Accessory

- H8 comes with cap screws (M2x6).

### ■ Others

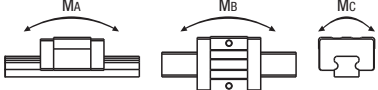
- Filled with Lithium soap based grease (Mullemp Grease PS2 by Kyodo Yushi Co., Ltd.).
- For operating life calculation, see P. 527.
- For operating life calculations, use our free calculation software from [http://download.misumi.jp/mol/fa\\_soft.html](http://download.misumi.jp/mol/fa_soft.html).
- The MX type is greased with a lithium complex grease (TOUGHLIX GREASE MP2, made by JXTG Nippon Oil & Energy Corporation).

Part Number			L	Block Dimension							Dowel Hole Dimensions		Guide Rail Dimension						
Type	MX	H		W	L <sub>1</sub>	B	Sxℓ	L <sub>2</sub>	K	Cb	N	(ℓ <sub>1</sub> )	W <sub>1</sub>	W <sub>2</sub>	H <sub>1</sub>	Ca	Counterbored Hole d1xd2xh	F	G
SSEBSN SSE2BSN SSEBSNL SSE2BSNL	-	8		40~130 (55)	17	19.6	12	M2x2.5	9.6	6.5	0.3	8.5	2	7	5	4.7	0.3	2.4x4.2x2.3	15
	Blank: None -MX: Provided	10	35~275 (75)	20	22.9	15	M3x3	11.9	7.8	0.3	10	2.5	9	5.5	5.5	0.3	3.5x6x3.5	20	7.5
		13	45~470 (95)	27	27	20	M3x3.5	13	10	0.5	13.5	3	12	7.5	7.5	0.5	3.5x6x4.5	25	10
		16	70~670 (110)	32	32.7	25	M3x4	17.7	12	0.5	16	4	15	8.5	9.5	0.5	3.5x6x4.5	40	15

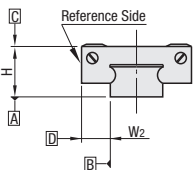
📏Dimensions in ( ) are for 2-Block Type.

⚠ Dimensions in ( ) are for 2-Block Type.

H	Basic Load Rating/Allowable Static Moment			Mass		
	C (Dynamic) kN	Co (Static) kN	MA N·m	Mb N·m	Mc N·m	Block kg
8	0.79	1.27	1.9	1.6	4.6	0.008
10	1.16	1.68	3.1	2.6	7.9	0.015
13	1.63	2.38	5.2	4.4	14.8	0.025
16	3.08	4.23	12.3	10.3	32.6	0.05



### ■ Preload and Accuracy Standards

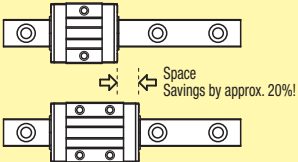


Specifications		Unit: µm
Radial Clearance		-3~0
Height H Tolerance		±20
Pair Variation of Height H		15
Width W <sub>2</sub> Tolerance		±25
Pair Variation of Width W <sub>2</sub>		20
Running Parallelism of Plane C against Plane A		See P. 525
Running Parallelism of Plane D against Plane A		See P. 525



Example

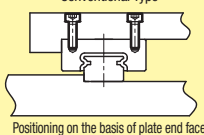
Short Block



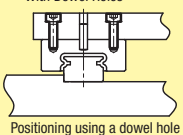
Standard Block

### - Installation Examples -

Conventional Type



With Dowel Holes



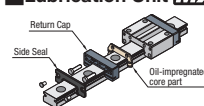
H	L	Unit Price	
		SSEBSN	SSE2BSN
8	40		
	55		-
	70		
	85		
	100		
	115		
	130		
10	35		-
	55		-
	75		-
	95		
	115		
	135		
	155		
	175		
	195		
	215		
13	235		
	255		
	275		
	45		-
	70		-
	95		-
	120		
	145		
	170		
	195		
	220		
	245		
	270		
	295		
	320		
	345		
	370		
16	395		
	420		
	445		
	470		
	70		-
	110		-
	150		
	190		
	230		
	270		
	310		
	350		
	390		
	430		
	470		
	510		
	550		
	590		
	630		
	670		

### ■ L Dimension Configurable Type (1mm Increment)

H	Unit Price	
	SSEBSNL	SSE2BSNL
8		
10		
13		
16		

⚠ For calculation of L Dimension Configurable Type (1mm Increment), add the above amount to the unit price of the Selectable Type longer than, and closest to this L Dimension Configurable Type.

### ■ Lubrication Unit MX



The same block size as existing products!

The oil-impregnated porous core part has been built into the product.

- Advantages of the Lubrication Unit MX:
  - Provides long-term maintenance-free operation.
  - Reduces maintenance costs.



Ordering Example

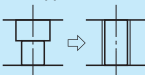
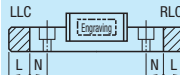
Part Number	-	L
SSE2BSN10	-	275
SSE2BSN-MX10	-	275
SSE2BSN10L	-	175
SSE2BSN10G	-	175

(With Lubrication Unit)  
(L Type Greased)  
(G Type Greased)  
Alternative grease types available.  
P. 531



Alterations

Part Number	-	L	-	(MC, RLC, LLC, B3, B4)
SSE2BSN16	-	430	-	MC

Alterations	Code	Spec.												
<p>Tapped Hole</p> 	MC	<p>Changes the rail mounting holes from counterbored holes to tapped holes.</p> <table border="1"><tr><th>H</th><th>MC</th></tr><tr><td>8</td><td>M3</td></tr><tr><td>10</td><td>M4</td></tr><tr><td>13</td><td></td></tr><tr><td>16</td><td>M5</td></tr></table>	H	MC	8	M3	10	M4	13		16	M5		
H	MC													
8	M3													
10	M4													
13														
16	M5													
<p>Rail End Cut</p> 	<p>Left End Cut LLC</p> <p>Right End Cut RLC</p>	<p>Cuts rail ends. Ordering Code LLC</p> <table border="1"><tr><th>H</th><th>L Cut</th><th>N</th></tr><tr><td>10</td><td>2.5</td><td></td></tr><tr><td>13</td><td>5</td><td>5</td></tr><tr><td>16</td><td>10</td><td></td></tr></table> <p>⚠ Applicable to Selectable Type only. ⚠ Overall length will be shorter by cutting. ⚠ Not applicable to H8. ⚠ Not applicable to L35 of H10 and L45 of H13.</p>	H	L Cut	N	10	2.5		13	5	5	16	10	
H	L Cut	N												
10	2.5													
13	5	5												
16	10													
<p>Rail is cut with the product ID facing out (datum on other side).</p>														
<p>3-Block Specifications</p>	B3	<p>Add 2 blocks to 1-block product to ship as 3-block separate item.</p> <p>⚠ There are restrictions for the L dimension length. See "Selectable Shortest Rail Length" for details. Selection Example: SSEBSN10-135-B3</p>												
<p>4-Block Specifications</p>	B4	<p>Add 3 blocks to 1-block product to ship as 4-block separate item.</p> <p>⚠ There are restrictions for the L dimension length. See "Selectable Shortest Rail Length" for details. Selection Example: SSEBSN16-670-B4</p>												

### ■ Additional Block Price

H	B3: Price Adder		B4: Price Adder	
	Standard	Standard MX	Standard	Standard MX
8				
10				
13				
16				

### ■ Selectable Shortest Rail Length for B3/B4

H	B3 (3-block)		B4 (4-block)	
	Standard	Standard MX	Standard	Standard MX
8	85	100		
10	95	135		
13	120	145		
16	150	190		

### ■ Options for Linear Guide

Position Retaining Parts	Block / Rail Fixing Parts
Rail Push Plates	Linear Lock
Rail Height Adjusting Blocks	Linear Guide Lock Units
Block Derailment Prevention Parts	Stopper Bolts