

Miniature Linear Guides - Wide Rails -

Standard Blocks, Light Preload / Slight Clearance

= For customers using industry standard products =

frame-surrounded products are compliant with the industry standard specifications (Stainless Steel, Light Preload, High Grade Type). Select the block from this spec.

Similar Products Comparison Points | The industry standard Wide Rails, Standard Blocks. Select from Light Preload Types with superior precision and rigidity.

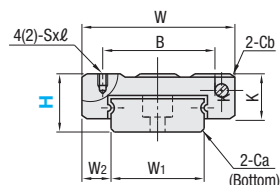
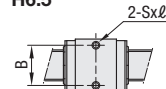
Industry Standard



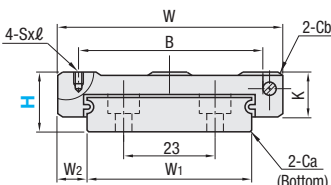
RoHS10

- This Type has the same fitting dimensions as the other company products, and thus, can be substituted for them.
- Blocks and rails are not sold as separate items. This Type has guaranteed radial clearances and accuracies as sets of blocks and rails.

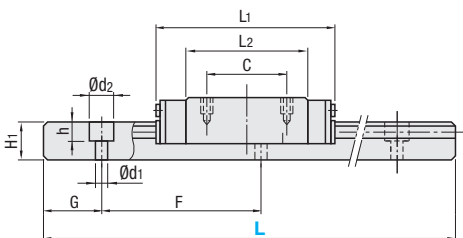
H6.5



H6.5, 9, 12, 14



H16



For L Configurable, G dimensions differ from those shown in the table below. For details, see P.531.

Precautions for Use

- Blocks are equipped with retainers (wire) to prevent balls from falling off. For how to handle the blocks, see P.525.
- Radial clearances and accuracies are not guaranteed if the blocks and rails are interchanged from the original set combinations.
- Straight grooves are provided on datum planes. Be sure to match the datum lines when using.
- Rails cannot be connected end to end.
- The accuracy of Linear Guides is guaranteed after mounting the rail (after fastening screws on the rail and pushing it onto the datum plane).
- Minor bending of the rail will be adjusted after being mounted and will not affect the performance.

Accessory

- H6.5 comes with Number 0, Class 1 Phillips button head screws (M2.5x7).

Others

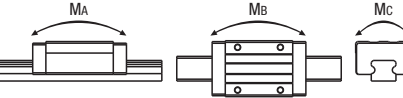
- Filled with Lithium soap based grease (Multemp Grease PS2 by Kyodo Yushi Co., Ltd.).
- For operating life calculation, see P.527.
- For operating life calculations, use our free calculation software from http://download.misumi.jp/mol/fa_soft.html.

Part Number			H	L	Block Dimension							Guide Rail Dimension							
Type					W	L ₁	B	C	Sxℓ	L ₂	K	Cb	W ₁	W ₂	H ₁	Ca	Counterbored Hole d1xd2xh	F	G
🌀Dimensions in () are for 2-Block Type.			6.5	50~130 (70)	17	21	13	-	M2.5x1.5	13.3	5	0.3	10	3.5	4	0.3	3x5x1.6	20	5
Stainless Steel Industry Standard Specifications SSEBW SSE2BW SSEBWL SSE2BWL	SSEBWV SSE2BWV SSEBWL SSE2BWL	SSEBWZ SSE2BWZ SSEBWLZ SSE2BWLZ	9	50~290 (110)	25	31.1	18	12	M2.6x2.5	20.1	7	0.3	14	5.5	5.2	0.5	3.5x6x3.2	30	10
			12	50~290 (110)	30	38	21	12	M2.6x3	27	9	0.3	18	6	7.5	0.5	3.5x6x4.5	30	10
			14	70~470 (150)	40	44.3	28	15	M3x3.5	30.1	11	0.5	24	8	8	0.5	4.5x8x4.5	40	15
			16	70~670 (190)	60	55	45	20	M4x4.5	40	13	0.5	42	9	9.5	0.5	4.5x8x4.5	40	15

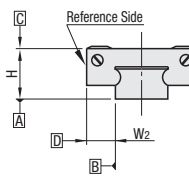
kgf=Nx0.101972

Unit: µm

Basic Load Rating/Allowable Static Moment		Mass	
H	C (Dynamic) kN	Co (Static) kN	MA
6.5	0.5	0.9	2.0
9	1.4	2.2	7.8
12	2.3	3.7	13.7
14	3.5	5.3	20.6
16	5.8	8.5	40.2



Preload and Accuracy Standards



Specifications	Light Preload, High Grade	Light Preload, Precision Grade	Slight Clearance, Standard Grade
Radial Clearance	-3~0	0~+15	0~+15
Height H Tolerance	±20	±10	±20
Pair Variation of Height H	15	7	40
Width W2 Tolerance	±25	±15	±25
Pair Variation of Width W2	20	10	40
Running Parallelism of Plane C against Plane A	See P.525		
Running Parallelism of Plane D against Plane A	See P.525		

Slight Clearance Type has clearance (Gap) between rails and blocks. If precision / rigidity is required, select Light Preload Type.

H	L	Unit Price							
		Stainless Steel				Carbon Steel			
		SSEBW	SSE2BW	SSEBWZ	SSE2BWZ	SEBW	SE2BW	SEBWZ	SE2BWZ
6.5	50	-	-	-	-	-	-	-	-
	70	-	-	-	-	-	-	-	-
	90	-	-	-	-	-	-	-	-
	110	-	-	-	-	-	-	-	-
	130	-	-	-	-	-	-	-	-
9	50	-	-	-	-	-	-	-	-
	80	-	-	-	-	-	-	-	-
	110	-	-	-	-	-	-	-	-
	140	-	-	-	-	-	-	-	-
	170	-	-	-	-	-	-	-	-
12	200	-	-	-	-	-	-	-	-
	230	-	-	-	-	-	-	-	-
	260	-	-	-	-	-	-	-	-
	290	-	-	-	-	-	-	-	-
	320	-	-	-	-	-	-	-	-
14	350	-	-	-	-	-	-	-	-
	380	-	-	-	-	-	-	-	-
	410	-	-	-	-	-	-	-	-
	440	-	-	-	-	-	-	-	-
	470	-	-	-	-	-	-	-	-
16	500	-	-	-	-	-	-	-	-
	530	-	-	-	-	-	-	-	-
	560	-	-	-	-	-	-	-	-
	590	-	-	-	-	-	-	-	-
	620	-	-	-	-	-	-	-	-

L Dimension Configurable Type (1mm Increment)

H	Unit Price			
	Stainless Steel		Carbon Steel	
	SSEBWL	SSE2BWL	SEBWL	SE2BWL
6.5	-	-	-	-
9	-	-	-	-
12	-	-	-	-
14	-	-	-	-
16	-	-	-	-

For calculation of L Dimension Configurable Type (1mm Increment), add the above amount to the unit price of the Selectable Type longer than, and closest to this L Dimension Configurable Type.



Ordering Example
Part Number - L
SSEBW12 - 200 (LTBC Plating)
RSEBW12 - 200 (L Type Greased)
SSEBW12L - 200 (G Type Greased)
SSEBW12G - 200
LTBC Plating and various Grease types available as alternative.
P531



Alterations
Part Number - L - (MC, RLC, LLC, WC, B3, B4)
SSE2BWL16 - 450 - MC

Alterations	Code	Spec.
Tapped Hole	MC	Changes the rail mounting holes from counterbored holes to tapped holes. H MC 6.5 M3 9 M4 12 M5 14 M5 16 M5
Rail End Cut	LLC	Cuts rail ends. Ordering Code LLC H L Cut N 9 5 12 5 14 5 16 10
Parallel Use of 2 Rails	WC	Pair variation of Height H between 2 rails is set within 15µm. Rails are shipped in pairs. Specify the actual rail quantity (even number) to order, not "pairs". Applicable to High Grade Type only. Not applicable to low temperature chrome plated products.
3-Block Specifications	B3	Add 2 blocks to 1-block product to ship as 3-block separate item. There are restrictions for the L dimension length. See "Selectable Shortest Rail Length" for details. Selection Example: SEBW9-260-B3
4-Block Specifications	B4	Add 3 blocks to 1-block product to ship as 4-block separate item. There are restrictions for the L dimension length. See "Selectable Shortest Rail Length" for details. Selection Example: SEBWL14-465-B4

Additional Block Price (Same Price for Standard/Same Grade)

H	B3: Price Adder	B4: Price Adder
6.5	Stainless Steel Carbon Steel	Stainless Steel Carbon Steel
9	-	-
12	-	-
14	-	-
16	-	-

Selectable Shortest Rail Length for B3/B4

H	B3 (3-block)	B4 (4-block)
6	90	110
9	140	170
12	140	220
14	190	230
16	230	270

Options for Linear Guide

Position Retaining Parts	Block / Rail Fixing Parts
Block Derailment Prevention Parts	Rail Push Plates
Stopper Bolts	Linear Lock
	Linear Guide Lock Units
P607	P612
P612	P613
	P614