

Miniature Linear Guides - Wide Rails - Standard Blocks, Light Preload / Slight Clearance

Similar Products Comparison Points | The industry standard Wide Rails, Standard Blocks. Select from Light Preload Types with superior precision and rigidity.

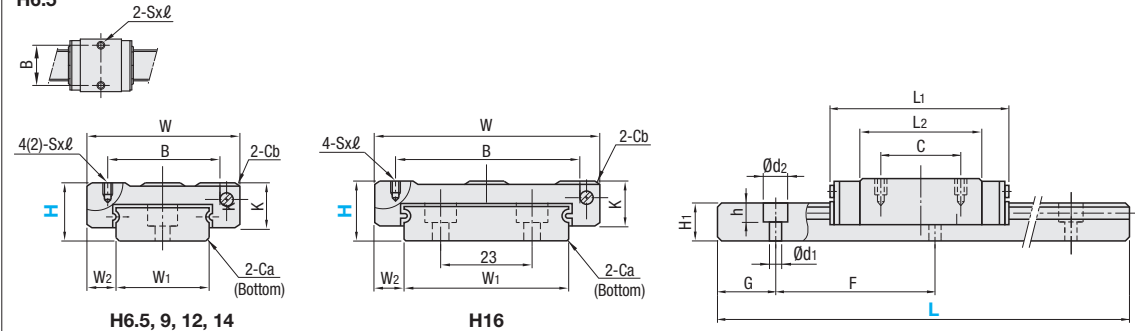
Industry Standard



RoHS10

- This Type has the same fitting dimensions as the other company products, and thus, can be substituted for them.
- Blocks and rails are not sold as separate items. This Type has guaranteed radial clearances and accuracies as sets of blocks and rails.

H6.5



For L Configurable, G dimensions differ from those shown in the table below. For details, see P.531.

The number in () is the Number of tapped holes for H6.5.

- Precautions for Use**
 - Blocks are equipped with retainers (wire) to prevent balls from falling off. For how to handle the blocks, see P.525.
 - Radial clearances and accuracies are not guaranteed if the blocks and rails are interchanged from the original set combinations.
 - Straight grooves are provided on datum planes. Be sure to match the datum lines when using.
 - Rails cannot be connected end to end.
 - The accuracy of Linear Guides is guaranteed after mounting the rail (after fastening screws on the rail and pushing it onto the datum plane).
 - Minor bending of the rail will be adjusted after being mounted and will not affect the performance.
- Accessory**
 - H6.5 comes with Number 0, Class 1 Phillips button head screws (M2.5x7).
- Others**
 - Filled with Lithium soap based grease (Multemp Grease PS2 by Kyodo Yushi Co., Ltd.).
 - For operating life calculation, see P.527.
 - For operating life calculations, use our free calculation software from http://download.misumi.jp/mol/fa_soft.html.

Part Number	Type	H	L	Block Dimension				Guide Rail Dimension											
				W	L1	B	C	Sxl	L2	K	Cb	W1	W2	H1	Ca	Counterbored Hole d1xd2xh	F	G	
SSEBW SSE2BW SSEBWL SSE2BWL	SSEBWV SSE2BWV SSEBWL SSE2BWL	SSEBWZ SSE2BWZ SSEBWLZ SSE2BWLZ	6.5	50~130 (70)	17	21	13	-	M2.5x1.5	13.3	5	0.3	10	3.5	4	0.3	3x5x1.6	20	5
			9	50~290 (110)	25	31.1	18	12	M2.6x2.5	20.1	7	0.3	14	5.5	5.2	0.5	3.5x6x3.2	30	10
			12	50~290 (110)	30	38	21	12	M2.6x3	27	9	0.3	18	6	7.5	0.5	3.5x6x4.5	30	10
			14	70~470 (150)	40	44.3	28	15	M3x3.5	30.1	11	0.5	24	8	8	0.5	4.5x8x4.5	40	15
			16	70~670 (190)	60	55	45	20	M4x4.5	40	13	0.5	42	9	9.5	0.5	4.5x8x4.5	40	15

Dimensions in () are for 2-Block Type.

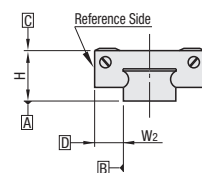
kgf=Nx0.101972

Unit: μm

H	Basic Load Rating/Allowable Static Moment			Mass			
	C (Dynamic) kN	Co (Static) kN	MA N-m	Me N-m	Mc N-m	Block kg	Guide Rail kg/m
6.5	0.5	0.9	2.0	2.0	4.0	0.006	0.28
9	1.4	2.2	7.8	7.8	15.5	0.02	0.50
12	2.3	3.7	13.7	16.3	30.4	0.04	0.96
14	3.5	5.3	20.6	22.3	52.1	0.08	1.40
16	5.8	8.5	40.2	43.6	148	0.15	2.95



Preload and Accuracy Standards



Specifications	Light Preload, High Grade	Light Preload, Precision Grade	Slight Clearance, Standard Grade
Radial Clearance	-3~0	0~+15	0~+15
Height H Tolerance	±20	±10	±20
Pair Variation of Height H	15	7	40
Width W2 Tolerance	±25	±15	±25
Pair Variation of Width W2	20	10	40
Running Parallelism of Plane C against Plane A	See P.525		
Running Parallelism of Plane D against Plane A	See P.525		

Slight Clearance Type has clearance (Gap) between rails and blocks. If precision / rigidity is required, select Light Preload Type.

H	L	Unit Price			
		SSEBW	SSE2BW	SSEBWZ	SSE2BWZ
6.5	50	-	-	-	-
	70	-	-	-	-
	90	-	-	-	-
	110	-	-	-	-
	130	-	-	-	-
9	50	-	-	-	-
	80	-	-	-	-
	110	-	-	-	-
	140	-	-	-	-
	170	-	-	-	-
12	200	-	-	-	-
	230	-	-	-	-
	260	-	-	-	-
	290	-	-	-	-
	310	-	-	-	-
14	70	-	-	-	-
	110	-	-	-	-
	150	-	-	-	-
	190	-	-	-	-
	230	-	-	-	-
16	270	-	-	-	-
	310	-	-	-	-
	350	-	-	-	-
	390	-	-	-	-
	430	-	-	-	-
16	470	-	-	-	-
	510	-	-	-	-
	550	-	-	-	-
	590	-	-	-	-
	630	-	-	-	-
670	-	-	-	-	

L Dimension Configurable Type (1mm Increment)

H	Unit Price	
	SSEBWL SSE2BWLZ	SSE2BWL SSE2BWLZ
6.5		
9		
12		
14		
16		

For calculation of L Dimension Configurable Type (1mm Increment), add the above amount to the unit price of the Selectable Type longer than, and closest to this L Dimension Configurable Type.

Ordering Example

Part Number - L

SSEBW12 - 200 (LTBC Plating)

RSEBW12 - 200 (L Type Greased)

SSEBW12L - 200 (G Type Greased)

SSEBW12G - 200

LTBC Plating and various Grease types available as alternative.

P531

Alterations

Part Number - L - (MC, RLC, LLC, WC, B3, B4)

SSE2BWL16 - 450 - MC

Alterations	Code	Spec.
Tapped Hole	MC	Changes the rail mounting holes from counterbored holes to tapped holes.
Rail End Cut	LLC	Cuts rail ends. Ordering Code LLC
Rail End Cut	RLC	Cuts rail ends. Ordering Code RLC
Parallel Use of 2 Rails	WC	Pair variation of Height H between 2 rails is set within 15μm. Rails are shipped in pairs. Specify the actual rail quantity (even number) to order, not "pairs". Applicable to High Grade Type only. Not applicable to low temperature chrome plated products.
3-Block Specifications	B3	Add 2 blocks to 1-block product to ship as 3-block separate item. There are restrictions for the L dimension length. See "Selectable Shortest Rail Length" for details. Selection Example: SSEBW9-260-B3
4-Block Specifications	B4	Add 3 blocks to 1-block product to ship as 4-block separate item. There are restrictions for the L dimension length. See "Selectable Shortest Rail Length" for details. Selection Example: SSEBW14-465-B4

Additional Block Price (Same Price for Standard/Same Grade) Selectable Shortest Rail Length for B3/B4

H	B3: Price Adder	B4: Price Adder	H	B3 (3-block)	B4 (4-block)
6.5			6	90	110
9			9	140	170
12			12	140	220
14			14	190	230
16			16	230	270

Options for Linear Guide

Position Retaining Parts	Block / Rail Fixing Parts
<ul style="list-style-type: none"> Block Derailment Prevention Parts Stopper Bolts 	<ul style="list-style-type: none"> Rail Push Plates Linear Guide Lock Units