

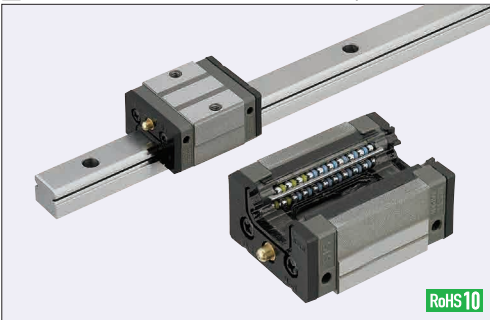
# Linear Guides for Medium Load

With Plastic Retainers, Interchangeable, Light Preload

= For customers using industry standard products =

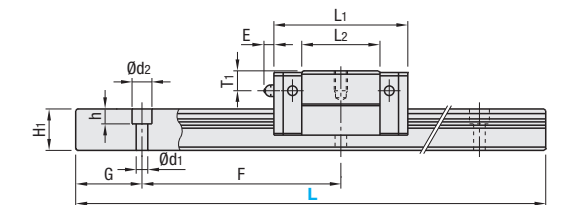
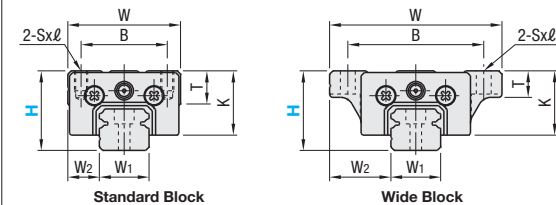
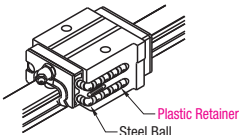
Frame-surrounded products are compliant with the industry standard specifications (Standard Block Type).  
Select the block from this spec.

■ **Features:** Linear Guides with Plastic Retainers prevent contact between balls and result in low noise levels under high-speed operation.



	Type		Block	Rail	L Dimension	Material Hardness
	1 block	2 blocks				
Standard	SVRZ	SV2RZ	SVRB	SRZL	Selectable	Carbon Steel 58HRC~
	SVRLZ	SV2RLZ		SRZLF	Configurable	
Wide Block Through Hole	SVWZ	SV2WZ	SVWB	SRZL	Selectable	
	SVWLZ	SV2WLZ		SRZLF	Configurable	
Wide Block Tapped Hole	SVWTZ	SV2WTZ	SVWTB	SRZL	Selectable	
	SVWTLZ	SV2WTLZ		SRZLF	Configurable	

Heat Resistant Temperature: 0 ~ 50°C



For L Configurable, G dimensions differ from those shown in the table below. For details, see P531.

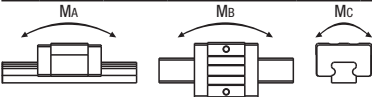
- **Precautions for Use**
- Blocks are equipped with retainers to prevent balls from falling off. For how to handle the blocks, see P525.
  - For Interchangeable, Light Preload Type, rails and blocks can be interchanged.
  - Straight grooves are provided on datum planes. Be sure to match the datum lines when using.
  - Rails cannot be connected end to end.
  - The accuracy of Linear Guides is guaranteed after mounting the rail (after fastening screws on the rail and pushing it onto the datum plane).
  - Minor bending of the rail will be adjusted after being mounted and will not affect the performance.

- **Others**
- Filled with Lithium soap based grease (Alvania Grease S2 by Showa Shell Sekiyu K.K.).
  - Grease Fittings: Straight Type for H24 and Angled Type for H28, H33 and H42.
  - Grease Fitting is screw-in type, and thus, can be repositioned.
  - For Operating Life Calculation, see P527.
  - For operating life calculations, use our free calculation software from [http://download.misumi.jp/mol/fa\\_soft.html](http://download.misumi.jp/mol/fa_soft.html).

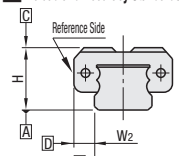
	Part Number		H	L	Block Dimension								Guide Rail Dimension							
	Type				W	L <sub>1</sub>	B	Sxℓ	L <sub>2</sub>	K	T	Grease Fitting			H <sub>1</sub>	W <sub>1</sub>	W <sub>2</sub>	Counterbored Hole d1xd2xh	F	G
	1 block	2 blocks										Mounting Hole	E	T <sub>1</sub>						
Standard Block	SVRZ	SV2RZ	24	100~1480 (160)	34	40.4	26	M4x6	23.6	19	10	Ø3	3	6	12.5	15	9.5	3.5x6x4.5	60	20
	SVRLZ	SV2RLZ																		
	(Block) SVRB	(Rail) SRZL SRZLF	28	160~1960 (220)	42	47.2	32	M5x7	30	22	12	M6xP0.75	11	5.5	15.5	20	11	6x9.5x8.5	60	20
			33	160~1960 (220)	48	59.6	35	M6x9	38	26	12	M6xP0.75	11	7	18	23	12.5	7x11x9	60	20
			42	200~1960 (280)	60	67.4	40	M8x12	42	33	13	M6xP0.75	11	8	23	28	16	7x11x9	80	20
Wide Block	SVWZ	SV2WZ	24	100~1480 (160)	52	40.4	41	4.5 (M5)	23.6	19	8	Ø3	3	6	12.5	15	18.5	3.5x6x4.5	60	20
	SVWLZ	SV2WLZ																		
	SVWTZ	SV2WTZ	28	160~1960 (220)	59	47.2	49	5.5 (M6)	30	22	10	M6xP0.75	11	5.5	15.5	20	19.5	6x9.5x8.5	60	20
	SVWTLZ	SV2WTLZ																		
	(Block) SVWB	(Rail) SRZL SRZLF	33	160~1960 (220)	73	59.6	60	7 (M8)	38	26	11	M6xP0.75	11	7	18	23	25	7x11x9	60	20
			42	200~1960 (280)	90	67.4	72	9 (M10)	42	33	11	M6xP0.75	11	8	23	28	31	7x11x9	80	20

L Dimension: Dimensions in ( ) are for 2-Block Type.  
Sxℓ Dimensions: Dimensions in ( ) are for Wide Block Tapped Hole.

H	Basic Load Rating		Allowable Static Moment			Mass		
	C (Dynamic) kN	Co (Static) kN	MA N · m	MB N · m	MC N · m	Block kg Standard	Guide Rail kg/m	Wide
24	4.9	7.8	21	18	39	0.14	0.17	1.4
28	7.25	11.8	40	34	80	0.19	0.24	2.3
33	12.7	20.8	96	81	164	0.34	0.44	3.1
42	18.7	29.6	153	128	282	0.58	0.76	4.8



## Preload and Accuracy Standards



## Interchangeable, Light Preload Type

Radial Clearance (µm)	
H24, 28	-4~0
H33, 42	-5~0

Dimensional Accuracy (µm)		Interchangeable
Height H Tolerance	±20	
Pair Variation of Height H	15	
Width W2 Tolerance	±30	
Pair Variation of Width W2	25	
Running Parallelism of Plane C against Plane A	See P525	
Running Parallelism of Plane D against Plane B		

H	Selectable L	Unit Price						
		1 block			2 blocks		Rail	Block
		SVRZ	SVWZ	SVWTZ	SV2RZ	SV2WZ	SV2WTZ	SVRB
								SVWB
								SVWTB
24	100							
	160							
	220							
	280							
	340							
	400							
	460							
	520							
	580							
	640							
	700							
	760							
	820							
	880							
	940							
	1000							
28	1060							
	1120							
	1180							
	1240							
	1300							
	1360							
	1420							
	1480							
	160							
	220							
	280							
	340							
	400							
	460							
	520							
	580							
33	640							
	700							
	760							
	820							
	880							
	940							
	1000							
	1060							
	1120							
	1180							
	1240							
	1300							
	1360							
	1420							
	1480							
	1540							
42	1600							
	1660							
	1720							
	1780							
	1840							
	1900							
	1960							
	200							
	280							
	360							
	440							
	520							
	600							
	680							
	760							
	840							
	920							
	1000							
	1060							
	1160							
	1240							
	1320							
	1400							
	1480							
	1560							
	1640							
	1720							
	1800							
	1880							
	1960							

## L Dimension Configurable Type (1mm Increment)

H	Unit Price						
	1 block			2 blocks		Rails	
	SVRLZ	SVWLZ	SVWTLZ	SV2RLZ	SV2WLZ	SV2WTLZ	SRZLF
24							
28							
33							
42							

For calculation of L Dimension Configurable Type (1mm Increment), add the above amount to the unit price of the Selectable Type longer than, and closest to this L Dimension Configurable Type.

Part Number - L  
SVRZ28 - 820

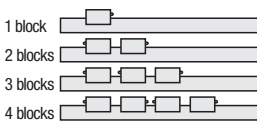
Alterations Part Number - L - (RLC, LLC~etc.)  
SVRZ28 - 640 - RLC

Alterations	Code	Spec.
Rail End Cut LLC	Left End Cut LLC	Cuts rail ends. Ordering Code: LLC H L Cut N 24 10 10 28 33 42
Rail is cut with the product ID facing out (datum on other side).	Right End Cut RLC	Applicable to Selectable Type only. Overall length will be shorter by cutting.
3-Block Specifications	B3	Add 2 blocks to 1-Block product to ship as 3-Block separate item. Selection Example: SVRZ24-400-B3
4-Block Specifications	B4	Add 3 blocks to 1-Block product to ship as 4-Block separate item. Selection Example: SVRZ24-400-B4

## Additional Block Price

H	B3:1Code			B4:1Code		
	Standard	Wide Through Holes	Wide Tapped Holes	Standard	Wide Through Holes	Wide Tapped Holes
24						
28						
33						
42						

## Position of Grease Fitting (Reference plane on the front side)



## Selectable Shortest Rail Length for B3/B4

H	B3 (3-Block)	B4 (4-Block)
24	280	340
28	340	400
33	340	400
42	360	440

## Options for Linear Guide

Linear Guide Clamps		Rail Height Adjusting Blocks	
P608		P609, 610	
Block Derailment Prevention Parts / Dust Resistant Parts		Block / Rail Fixing Parts	
■ Stopper Bolts		■ Rail Push Plates	
P612		P612	
■ Block Stopper Plates		■ Linear Locks	
P612		P613	
■ Rail Mounting Hole Caps		■ Linear Guide Lock Units	
P612		P614	