

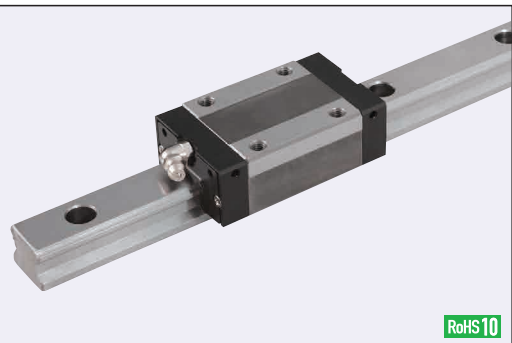
Linear Guides for Heavy Load

Normal Clearance



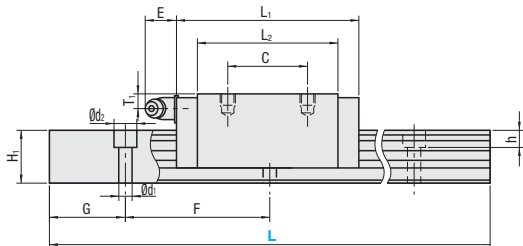
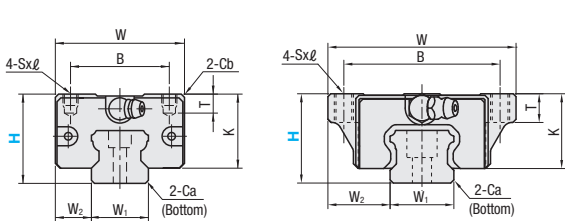
Similar Products Comparison Points

Select C-VALUE Products for medium-accuracy positioning, medium/low load, and medium-to-low frequency drive applications. When you consider using C-VALUE Products, select an appropriate model after comparing the specifications with those of the existing products. **P575, P579**



RoHS10

The mounting dimensions are same for the existing and C-VALUE Products.



For L Configurable, G dimensions differ from those shown in the table below. For details, see **P 531**.

Precautions for Use

- This product is All Ball Type. Blocks are equipped with retainers to prevent balls from derailing. For how to handle the blocks, see **P 525**.
- Radial clearances and accuracies are not guaranteed if the blocks and rails are interchanged from the original set combinations.
- Thick grooves are provided on the datum planes of blocks and rails. Be sure to match the datum planes when using.
- Rails cannot be connected end to end.
- The accuracy of Linear Guides is guaranteed after mounting the rail (after fastening screws on the rail and pushing it onto the datum plane).
- Minor bending of the rail will be adjusted after being mounted and will not affect the performance.

Others

- Filled with Lithium soap based grease (Alvania Grease S2 by Showa Shell Sekiyu K.K.).
- Grease Fittings: Straight Type for H24 and Angled Type for H28 and H33.
- Grease Fitting is screw-in type, and thus, can be repositioned.
- For installation and maintenance of Linear Guides, see **P 529**.

H	Type		H	L	Block Dimension											Guide Rail Dimension								
					W	L ₁	B	C	Sxℓ	L ₂	K	T	Cb	Grease Fitting			H ₁	W ₁	W ₂	Ca	Counterbored Hole d1xd2xh	F	G	
														Mounting Hole	E	T ₁								
Standard	(1 block) C-SXR C-SXRL	(2 blocks) C-SX2R C-SX2RL	24	100~1480 (160)	34	55.9	26	26	M4x5	39.5	20.8	6.2	0.5	M4x0.7	7	5.5	13	15	9.5	0.5	4.5x7.5x6	60	20	
			28	100~1960 (160)	42	66.7	32	32	M5x5	46.7	23.4	7.2	0.5	M6x1	14	4.5	16.5	20	11	0.5	6x9.5x8.5	60	20	
			33	100~1960 (220)	48	80	35	35	M6x6	59	27.2	8.15	1	M6x1	14	4.5	20	23	12.5	0.9	7x11x9	60	20	
			42	120~1960 (280)	60	95.3	40	40	M8x8	69.3	35	8.5	1.0	M6x1	14	8	23	28	16	1	9x14x12	80	20	
Wide Block	(1 block) C-SXWT C-SXWTL	(2 blocks) C-SX2WT C-SX2WTL	24	100~1480 (160)	52	55.9	41	26	M5x7	39.5	20.8	7	-	M4x0.7	7	5.5	13	15	18.5	0.5	4.5x7.5x6	60	20	
			28	100~1960 (160)	59	66.7	49	32	M6x9	46.7	23.4	9	-	M6x1	14	4.5	16.5	20	19.5	0.5	6x9.5x8.5	60	20	
			33	100~1960 (220)	73	80	60	35	M8x10	59	27.2	10	-	M6x1	14	4.5	20	23	25	0.9	7x11x9	60	20	

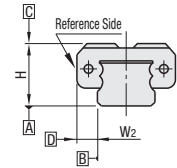
L Dimension: Dimensions in () are for 2-Block Type.

Allowable Load

kgf=N×0.10972

H	Basic Load Rating		Allowable Static Moment			Mass		
	C (Dynamic) kN	Co kN	MA N·m	MB N·m	MC N·m	Block kg		Guide Rail kg/m
						Standard	Wide	
24	4.9	9.7	48.4	48.4	75.7	0.13	0.17	1.32
28	7.7	14.1	81.9	81.9	150.4	0.18	0.24	2.28
33	10.6	19.7	141.2	141.2	240.8	0.3	0.44	3.17

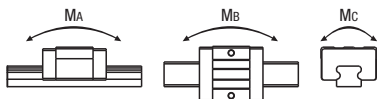
Preload and Accuracy Standards



Interchangeable, Light Preload Type

Radial Clearance (μm)	
H24	-4~+4
H28	-5~+5
H33	-6~+6

Dimensional Accuracy (μm)	
Height H Tolerance	±120
Variation of Height H	40
Width W ₂ Tolerance	±120
Variation of Width W ₂	40
Running Parallelism of Plane C against Plane A	See P 525
Running Parallelism of Plane D against Plane B	



H	L	Unit Price			
		1 block		2 blocks	
		C-SXR	C-SXWT	C-SX2R	C-SX2WT
24	100				
	160				
	220				
	280				
	340				
	400				
	460				
	520				
	580				
	640				
	700				
	760				
	820				
	880				
	940				
	1000				
	1060				
	1120				
	1180				
	1240				
28	1300				
	1360				
	1420				
	1480				
	1540				
	1600				
	1660				
	1720				
	1780				
	1840				
	1900				
	1960				
	100				
	160				
	220				
	280				
	340				
	400				
	460				
33	520				
	580				
	640				
	700				
	760				
	820				
	880				
	940				
	1000				
	1060				
	1120				
	1180				
	1240				
	1300				
	1360				
	1420				
	1480				
	1540				
	1600				
	1660				
42	1720				
	1780				
	1840				
	1900				
	1960				
	120				
	200				
	280				
	360				
	440				
	520				
	600				
	680				
	760				
	840				
	920				
	1000				
	1080				
	1160				
	1240				
	1320				
	1400				
	1480				
	1560				
	1640				
	1720				
	1800				
	1880				
	1960				

Similar Product Page **P575**



Ordering Example

Part Number - L
C-SXR28 - 880
C-SXWT28 - 880



Alterations

Part Number (Type, H) - L - (B3)
C-SXR28 - 640 - B3

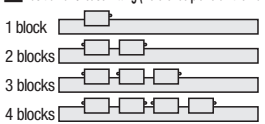
Alterations	Code	Spec.
3-Block Specifications	B3	Add 2 blocks to 1-block product to ship as 3-block separate item. Selection Example: C-SXR24-400-B3
4-Block Specifications	B4	Add 3 blocks to 1-block product to ship as 4-block separate item. Selection Example: C-SXR24-400-B4

L Dimension Configurable Type (10mm Increment)

H	Unit Price			
	1 block	2 blocks	3 blocks	4 blocks
24	C-SXRL	C-SXWTL	C-SX2RL	C-SX2WTL
28				
33				

For calculation of L Dimension Configurable Type (10mm Increment), add the above amount to the unit price of the Selectable Type longer than, and closest to this L Dimension Configurable Type.

Position of Grease Fitting (Reference plane on the front side)



Selectable Shortest Rail Length for B3/B4

H	B3 (3-block)	B4 (4-block)
24	340	400
28	400	460
33	440	520

Additional Block Price

H	Unit Price			
	B3: Price Adder		B4: Price Adder	
24	C-SXR	C-SXWT	C-SXR	C-SXWT
28				
33				



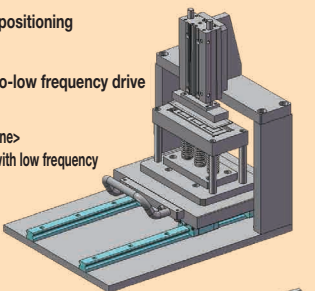
Example

C-VALUE Products - App. Example

- Medium-accuracy positioning
- Medium/low load
- Used for medium-to-low frequency drive

<Manual Press Fitting Machine>

Used for manual operation with low frequency



<Air Cylinder Drive Section>

Used for medium-accuracy positioning

