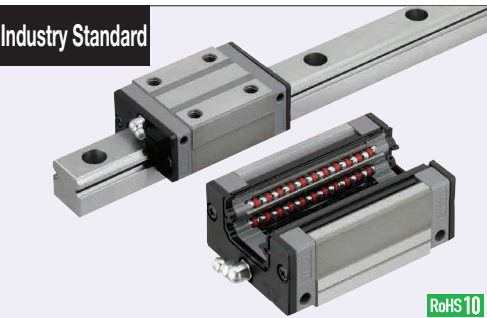


# Linear Guides for Super Heavy Load

## With Plastic Retainers, Interchangeable, Light Preload

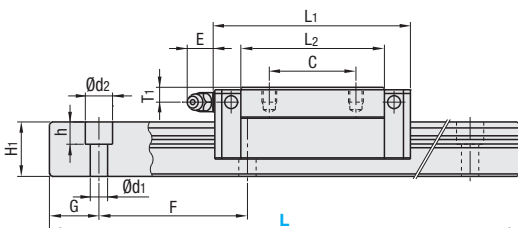
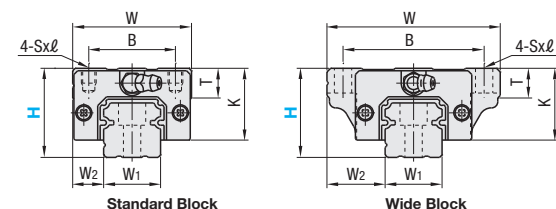
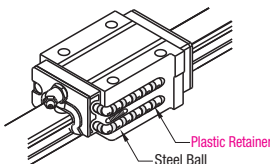
**Similar Products Comparison Points** | Select this product for high precision positioning, heavy load, and high frequency drive application.

### Industry Standard



	Type		Block	Rail	L Dimension	Material Hardness
	1 block	2 blocks				
Standard	SHRZ	SH2RZ	SHRB	SHZL	Selectable	Carbon Steel 58HRC~
	SHRLZ	SH2RLZ		SHZLF	Configurable	
Wide Block Through Hole	SHWZ	SH2WZ	SHWB	SHZL	Selectable	
	SHWLZ	SH2WLZ		SHZLF	Configurable	
Wide Block Tapped Hole	SHWTZ	SH2WTZ	SHWPB	SHZL	Selectable	
	SHWTLZ	SH2WTLZ		SHZLF	Configurable	

Heat Resistant Temperature: 0 ~ 50°C



For L Configurable, G dimensions differ from those shown in the table below. For details, see P531.

#### Precautions for Use

- Blocks are equipped with retainers to prevent balls from falling off. For how to handle the blocks, see P525.
- For Interchangeable, Light Preload Type, rails and blocks can be interchanged.
- Straight grooves are provided on datum planes. Be sure to match the datum lines when using.
- Rails cannot be connected end to end.
- The accuracy of Linear Guides is guaranteed after mounting the rail (after fastening screws on the rail and pushing it onto the datum plane).
- Minor bending of the rail will be adjusted after being mounted and will not affect the performance.

#### Others

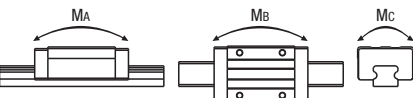
- Filled with Lithium soap based grease (Alvania Grease S2 by Showa Shell Sekiyu K.K.).
- Angled Grease Fitting Type
- Grease Fitting is screw-in type, and thus, can be repositioned.
- For Operating Life Calculation, see P527
- For operating life calculations, use our free calculation software from [http://download.misumi.jp/mol/fa\\_soft.html](http://download.misumi.jp/mol/fa_soft.html).

	Part Number		H	L	Block Dimension										Guide Rail Dimension						
	1 block	2 blocks			W	L <sub>1</sub>	B	C	Sxℓ	L <sub>2</sub>	K	T	Grease Fitting			H <sub>1</sub>	W <sub>1</sub>	W <sub>2</sub>	Counterbored Hole d1xd2xh	F	G
Standard Block	SHRZ SHRLZ	SH2RZ SH2RLZ	30	220~1960	44	69.8	32	36	M5x6	50	25	12	M6xP0.75	11	5	18	20	12	6x9.5x8.5	60	20
	(Block) SHRB	(Rail) SHZL SHZLF	36	220~1960	48	79	35	35	M6x6	58	29	12	M6xP0.75	11	6	22	23	12.5	7x11x9	60	20
			42	280~1960	60	85.6	40	40	M8x8	59	33	14	M6xP0.75	11	7	26	28	16	9x14x12	80	20
Wide Block	SHWZ SHWLZ SHWTZ SHWTLZ	SH2WZ SH2WLZ SH2WTZ SH2WTLZ	30	220~1960	63	69.8	53	40	6 (M6)	50	25	10	M6xP0.75	11	5	18	20	21.5	6x9.5x8.5	60	20
	(Block)	(Rail)	36	220~1960	70	79	57	45	7 (M8)	58	29	11	M6xP0.75	11	6	22	23	23.5	7x11x9	60	20
	SHWB SHWPB	SHZL SHZLF	42	280~1960	90	98.6	72	52	9 (M10)	72	33	11	M6xP0.75	11	7	26	28	31	9x14x12	80	20

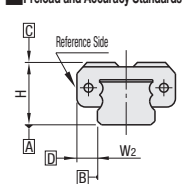
Sxℓ Dimensions: Dimensions in ( ) are for Wide Block Tapped Hole.

H	Basic Load Rating		Allowable Static Moment			Mass	
	C (Dynamic) kN	Co (Static) kN	MA N · m	Mb N · m	Mc N · m	Block kg	Guide Rail kg/m
30	16.3	29.6	167	141	199	0.33	0.45
36	22.4	37.5	246	207	295	0.46	0.63
42	31.0	51.5	356	305	490	0.69	1.20

Values in ( ) are for Wide Block (Through Holes and Tapped Holes) Type.



#### Preload and Accuracy Standards



#### Interchangeable, Light Preload Type

Radial Clearance (μm)	
H30, 36	-5~0
H42	-7~0

Dimensional Accuracy (μm)	
Height H Tolerance	±20
Pair Variation of Height H	15
Width W2 Tolerance	±30
Pair Variation of Width W2	25
Running Parallelism of Plane C against Plane A	See
Running Parallelism of Plane D against Plane B	P525

= For customers using industry standard products =

Frame-surrounded products are compliant with the industry standard specifications (Standard Block Type).  
Select the block from this spec.

H	Selectable L	Unit Price									
		1 block			2 blocks			Rail	Block		
		SHRZ	SHWZ	SHWTZ	SH2RZ	SH2WZ	SH2WTZ	SHZL	SHRB	SHWB	SHWPB
30	220										
	280										
	340										
	400										
	460										
	520										
	580										
	640										
	700										
	760										
	820										
	880										
	940										
	1000										
	1060										
	1120										
1180											
1240											
1300											
1360											
1420											
1480											
1540											
1600											
1660											
1720											
1780											
1840											
1900											
1960											
36	220										
	280										
	340										
	400										
	460										
	520										
	580										
	640										
	700										
	760										
	820										
	880										
	940										
	1000										
	1060										
	1120										
1180											
1240											
1300											
1360											
1420											
1480											
1540											
1600											
1660											
1720											
1780											
1840											
1900											
1960											
42	280										
	360										
	440										
	520										
	600										
	680										
	760										
	840										
	920										
	1000										
	1080										
	1160										
	1240										
	1320										
	1400										
	1480										
1560											
1640											
1720											
1800											
1880											
1960											