

Linear Guides for Medium/Heavy Load - Stainless Steel

Normal Clearance

= For customers using industry standard products =

Frame-surrounded products are compliant with the industry standard specifications (Standard Block Type).
Select the block from this spec.

■ **Features:** Linear Guides for Medium and Heavy Load excellent in corrosion resistance.

Industry Standard



⚠ Blocks and rails are not sold as separate items. Normal Clearance Type has guaranteed radial clearances and accuracies as sets of blocks and rails.

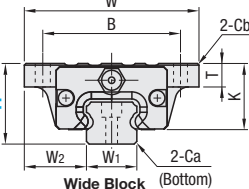
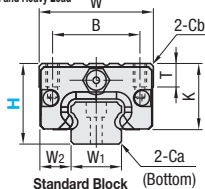
RoHS10

Lubrication Units MX
Provides long term maintenance-free operation.

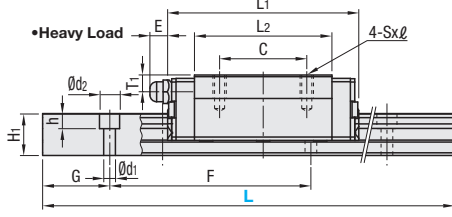
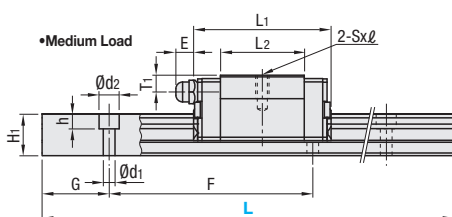
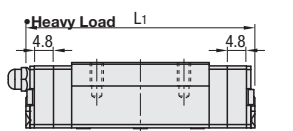
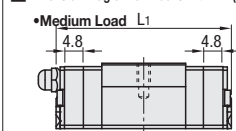
Type	MX (Lubrication Units)	L Dimension	Number of Blocks	Material Hardness
Medium Load				
SSVR		Selectable	1	
SSV2R		2		
SSVRL		Configurable	1	
SSV2RL		2		
SSVW		Selectable	1	
SSV2W		2		
SSVWL		Configurable	1	
SSV2WL		2		
Heavy Load				
SSXR		Selectable	1	
SSX2R		2		
SSXRL		Configurable	1	
SSX2RL		2		
SSXW		Selectable	1	
SSX2W		2		
SSXWL		Configurable	1	
SSX2WL		2		

Heat Resistant Temperature: -20 ~ 80°C

Medium and Heavy Load



■ Dimension Diagram of Blocks with MX (Lubrication Units)



⚠ For L Configurable, G dimensions differ from those shown in the table below. For details, see P531.

Precautions for Use

- Blocks are equipped with retainers to prevent balls from falling off. For how to handle the blocks, see P525.
- Radial clearances and accuracies are not guaranteed if the blocks and rails are interchanged from the original set combinations.
- Straight grooves are provided on datum planes. Be sure to match the datum lines when using.
- Rails cannot be connected end to end.
- The accuracy of Linear Guides is guaranteed after mounting the rail (after fastening screws on the rail and pushing it onto the datum plane).
- Minor bending of the rail will be adjusted after being mounted and will not affect the performance.

Others

- Filled with Lithium soap based grease (Alvania Grease S2 by Showa Shell Sekiyu K.K.).
- Grease Fittings: Straight Type for H24 and Angled Type for H28 and H33.
- Grease Fitting is screw-in type, and thus, can be repositioned.
- For Operating Life Calculation, see P527.
- For operating life calculations, use our free calculation software from http://download.misumi.jp/mol/fa_soft.html.

Part Number				L	Block Dimension												Guide Rail Dimension									
Type	MX	H	W		L1		B	C	Sxℓ	L2	K	T	Cb	Grease Fitting			H1	W1	W2	Ca	Counterbored Hole d1xd2xh	F	G			
					Standard	MX								Mounting Hole	E	T1										
Medium Load	(1 block) SSVR	(2 blocks) SSV2R SSVRL SSV2RL SSVW SSV2W SSVWL SSV2WL	Blank: None -MX: Provided	24	100~700 (160)	34 (52)	41	50.6	26 (41)	-	M4x7 (4.5)	25	20	7 (7)	0.85 (0.5)	M5xP0.8	6	5	12.5	15	9.5 (18.5)	0.5	3.5x6x4.5	60	20	
	28			160~700 (220)	42 (59)	47	56.6	32 (49)	-	M5x8 (5.5)	27.6	22.5	7.5 (9)	1	M6xP0.75	13	6	15.5	20	11 (19.5)	0.6	6x9.5x8.5	60	20		
	33			160~700 (220)	48 (73)	59	68.6	35 (60)	-	M6x9 (7)	37	26.5	8 (10)	1	M6xP0.75	13	6.8	18	23	12.5 (25)	0.8	7x11x9	60	20		
	Heavy Load			(1 block) SSXR	(2 blocks) SSX2R SSXRL SSX2RL SSXW SSX2W SSXWL SSX2WL	24	100~700 (220)	34 (52)	57	66.6	26 (41)	26	M4x7 (4.5)	41	20	7 (7)	0.85 (0.5)	M5xP0.8	6	5	12.5	15	9.5 (18.5)	0.5	3.5x6x4.5	60
28		160~700 (220)	42 (59)	67		76.6	32 (49)	32	M5x8 (5.5)	47.6	22.5	7.5 (9)	1	M6xP0.75	13	6	15.5	20	11 (19.5)	0.6	6x9.5x8.5	60	20			
33		160~700 (280)	48 (73)	83		92.6	35 (60)	35	M6x9 (7)	61	26.5	8 (10)	1	M6xP0.75	13	6.8	18	23	12.5 (25)	0.8	7x11x9	60	20			

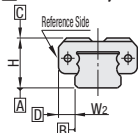
⚠ L Dimension: Dimensions in () are for 2-Block Type.

⚠ Sxℓ Dimensions: Dimensions in () are for Wide Block Type.

kgf=Nx0.101972

Block	H	Basic Load Rating/Allowable Static Moment				Mass	
		C (Dynamic) kN	Co (Static) kN	MA, Mb N·m	Mc N·m	Block kg	Guide Rail kg/m
Medium Load	24	5.0	8.23	33	57	0.15	0.20
	28	7.2	12.1	58	135	0.20	0.25
	33	11.7	19.6	109	225	0.30	0.40
	33	8.6	14.2	69	98	0.20	0.25
Heavy Load	28	12.5	21.3	155	232	0.30	0.35
	33	20.2	34.5	275	393	0.45	0.60

Preload and Accuracy Standards

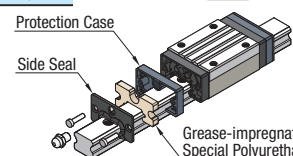


Normal Clearance Type

Radial Clearance (μm)	Standard Grade
H24	-4~+2
H28	-5~+2
H33	-6~+3

Dimensional Accuracy (μm)		Standard Grade
Height H Tolerance		±100
Pair Variation of Height H		20
Width W2 Tolerance		±100
Pair Variation of Width W2		H24, 28: 20 H33: 30
Running Parallelism of Plane C against Plane A		See P525
Running Parallelism of Plane D against Plane B		See P525

Lubrication Units MX



■ Advantages of Lubrication Unit MX: Provides long term maintenance-free operation. Reduces maintenance cost. Most suitable where the design does not allow lubrication. For details, see P530.



Ordering Example

Part Number	-	L
SSXRL28	-	575
SSXR-MX28	-	575
RSXRL28	-	575
SSXRL28L	-	575
SSXRL28G	-	575

(With Lubrication Units)
(LTBC Plating)
(L Type Greased)
(G Type Greased)

LTBC Plating and various Grease types available as alternative (Except Blocks with Lubrication Units) P532



Alterations

Part Number	-	L	-	(RLC, LLC...etc.)
SSXR33	-	520	-	RLC

Alterations	Code	Spec.
Rail End Cut LLC Rail is cut with the product ID facing out (datum on other side).	Left End Cut LLC	Cuts rail ends. Ordering Code LLC H L Cut N 24 10 10 28 33
	Right End Cut RLC	⚠ Applicable to Selectable Type only. ⚠ Overall length will be shorter by cutting. ⚠ Not applicable to Heavy Load Type with H dimension 24 of L dimension 100.
	Parallel Use of 2 Rails	Pair variation of Height H between 2 rails is set within 20μm. Two rails are shipped as a pair. ⚠ Specify the actual rail quantity (even number) to order, not "pairs". ⚠ Not applicable to low temperature chrome plated products.
	3-Block Specifications	Add 2 blocks to 1-Block product to ship as 3-Block separate item. Selection Example: SSVR24-400-B3
4-Block Specifications	B4	Add 3 blocks to 1-Block product to ship as 4-Block separate item. Selection Example: SSVR24-400-B4

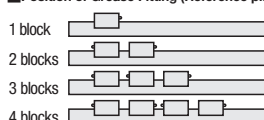
Medium Load

H	B3:1Code				B4:1Code			
	Standard	Wide	Standard MX	Wide MX	Standard	Wide	Standard MX	Wide MX
24								
28								
33								

Heavy Load

H	B3:1Code				B4:1Code			
	Standard	Wide	Standard MX	Wide MX	Standard	Wide	Standard MX	Wide MX
24								
28								
33								

Position of Grease Fitting (Reference plane on the front side)



Selectable Shortest Rail Length for B3/B4

H	Medium Load		Heavy Load	
	B3 (3-Block)	B4 (4-Block)	B3 (3-Block)	B4 (4-Block)
24	280	340	340	400
28	340	400	400	460
33	340	400	400	520

L Dimension Configurable Type (1mm Increment)

H	Unit Price			
	1 block	2 blocks	1 block	2 blocks
24	SSVRL	SSVWL	SSV2RL	SSV2WL
28	SSXRL	SSXWL	SSX2RL	SSX2WL
33				

⚠ For calculation of L Dimension Configurable Type (1mm Increment), add the above amount to the unit price of the Selectable Type longer than, and closest to this L Dimension Configurable Type.

MX (Lubrication Unit) Unit Price

H	Unit Price	
	1 block	2 blocks
24		
28		
33		

⚠ Price of Guide Rails with MX (Lubrication Unit) = Linear Guide Unit Price + MX Unit Price