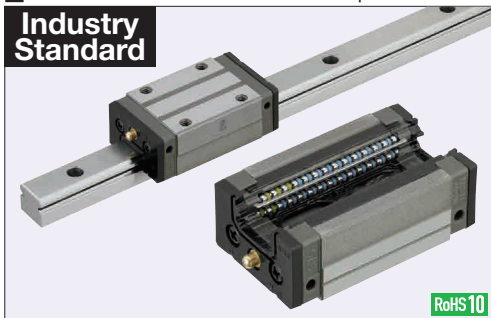


Linear Guides for Heavy Load - Stainless Steel

With Plastic Retainers, Interchangeable, Light Preload

Features: Linear Guides with Plastic Retainers prevent contact between balls and result in low noise levels under high-speed operation.

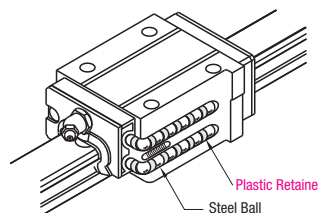
Industry Standard



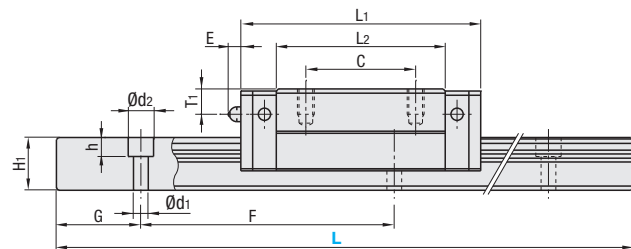
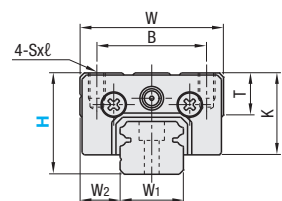
RoHS10

Material Hardness	Type		Block	Rail	L Dimension
	1 block	2 blocks			
Stainless Steel (EN 1.4125 Equiv.) 57HRC~	SSXRZ	SSX2RZ	SSXRB	SSRZL	Selectable
	SSXRLZ	SSX2RLZ		SSRZLF	Configurable

Heat Resistant Temperature: 0 ~ 50°C



Plastic Retainer
Steel Ball



For L Configurable, G dimensions differ from those shown in the table below. For details, see P.531.

- Precautions for Use
- Blocks are equipped with retainers to prevent balls from falling off. For how to handle the blocks, see P.525.
- For Interchangeable, Light Preload Type, rails and blocks can be interchanged.
- Straight grooves are provided on datum planes. Be sure to match the datum lines when using.
- Rails cannot be connected end to end.
- The accuracy of Linear Guides is guaranteed after mounting the rail (after fastening screws on the rail and pushing it onto the datum plane).
- Minor bending of the rail will be adjusted after being mounted and will not affect the performance.

- Others
- Filled with Lithium soap based grease (Alvania Grease S2 by Showa Shell Sekiyu K.K.).
- Grease Fittings: Straight Type for H24 and Angled Type for H28 and H33.
- Grease Fitting is screw-in type, and thus, can be repositioned.
- For Operating Life Calculation, see P.527
- For operating life calculations, use our free calculation software from http://download.misumi.jp/mol/fa_soft.html.

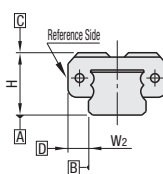
Part Number		H	L	Block Dimension											Guide Rail Dimension					
Type				W	L ₁	B	C	Sxℓ	L ₂	K	T	Grease Fitting			H ₁	W ₁	W ₂	Counterbored Hole d1xd2xh	F	G
1 block	2 blocks											Mounting Hole	E	T ₁						
SSXRZ	SSX2RZ	24	100~1480 (160)	34	56.8	26	26	M4x6	40	19.4	10	Ø3	3	6	12.5	15	9.5	3.5x6x4.5	60	20
SSXRLZ	SSX2RLZ	28	160~1480 (220)	42	65.2	32	32	M5x7	48	22	12	M6xP0.75	11	5.5	15.5	20	11	6x9.5x8.5	60	20
(Block) SSXRB	(Rail) SSRZL SSRZLF	33	160~1480 (220)	48	81.6	35	35	M6x9	60	26	12	M6xP0.75	11	7	18	23	12.5	7x11x9	60	20

L Dimension: Dimensions in () are for 2-Block Type.

H	Basic Load Rating		Allowable Static Moment			Mass	
	C (Dynamic) kN	Co (Static) kN	MA N·m	MB N·m	MC N·m	Block kg	Guide Rail kg/m
24	7.9	15.6	74	62	78	0.20	1.4
28	11.1	21.8	124	104	149	0.28	2.3
33	17.9	33.5	242	203	266	0.51	3.1



Preload and Accuracy Standards



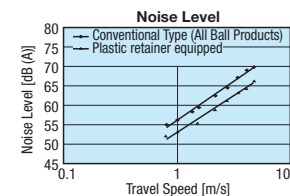
Interchangeable, Light Preload Type

Radial Clearance (μm)	
H24, 28	-4~0
H33	-5~0

Dimensional Accuracy (μm)	
Height H Tolerance	±20
Pair Variation of Height H	15
Width W2 Tolerance	±30
Pair Variation of Width W2	25
Running Parallelism of Plane C against Plane A	
Running Parallelism of Plane D against Plane B	

See P.525

Features of Plastic Retainers: Low noise levels and improved sound quality



- Lack of mutual contact between balls results in low noise levels and improved sound quality.
- Since there is no mutual contact abrasion between the balls, particle generation is less than those of conventional products.

Ordering Example Part Number - L
SSXRZ28 - 640

Alterations Part Number - L - (RLC, LLC...etc.)
SSXRZ28 - 640 - RLC

H	Selectable L	Unit Price			
		Set	Rail	Block	
24	100	SSXRZ	SSX2RZ	SSRZL	SSXRB
	160				
	220				
	280				
	340				
	400				
	460				
	520				
	580				
	640				
	700				
	760				
	820				
	880				
	940				
	1000				
28	1060				
	1120				
	1180				
	1240				
	1300				
	1360				
	1420				
	1480				
	160				
	220				
	280				
	340				
	400				
	460				
	520				
	580				
33	640				
	700				
	760				
	820				
	880				
	940				
	1000				
	1060				
	1120				
	1180				
	1240				
	1300				
	1360				
	1420				
	1480				
	160				
	220				
	280				
	340				
	400				
	460				
	520				
	580				
	640				
	700				
	760				
	820				
	880				
	940				
	1000				
	1060				
	1120				
	1180				
	1240				
	1300				
	1360				
	1420				
	1480				

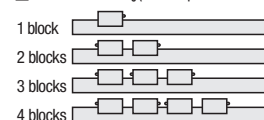
L Dimension Configurable Type (1mm Increment)

H	Unit Price		
	Set	Rails	
24	SSXRLZ	SSX2RLZ	SSRZLF
28			
33			

For calculation of L Dimension Configurable Type (1mm Increment), add the above amount to the unit price of the Selectable Type longer than, and closest to this L Dimension Configurable Type.

Alterations	Code	Spec.
Rail End Cut LLC	Left End Cut LLC	Cuts rail ends. Ordering Code LLC
		H L Cut N
		24 10 10
		28
		33
		Applicable to Selectable Type only.
		Overall length will be shorter by cutting.
3-Block Specifications	B3	Add 2 blocks to 1-Block product to ship as 3-Block separate item. Selection Example: SSXRZ24-400-B3
4-Block Specifications	B4	Add 3 Blocks to 1-Block product to ship as 4-Block separate item. Selection Example: SSXRZ24-400-B4

Position of Grease Fitting (Reference plane on the front side)



Additional Block Price

H	1Code	
	B3	B4
24		
28		
33		
Selectable Shortest Rail Length for B3/B4		
H	B3 (3-Block)	B4 (4-Block)
24	340	400
28	400	460
33	400	520

Options for Linear Guide

Linear Guide Clamps	Rail Height Adjusting Blocks
P608	P609, 610
Block Derailment Prevention Parts / Dust Resistant Parts	Block / Rail Fixing Parts
Stopper Bolts	Rail Push Plates
P612	P612
Block Stopper Plates	Linear Locks
P612	P613
Rail Mounting Hole Caps	Linear Guide Lock Units
P612	P614