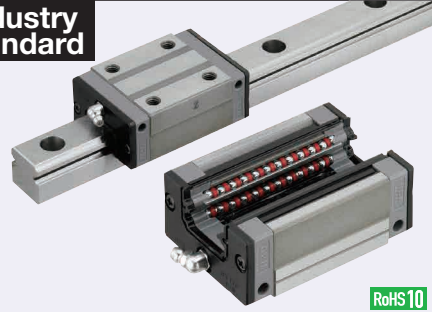


Linear Guides for Super Heavy Load - Stainless Steel

With Plastic Retainers, Interchangeable, Light Preload

Features: Linear Guides with Plastic Retainers prevent contact between balls and result in low noise levels under high-speed operation.

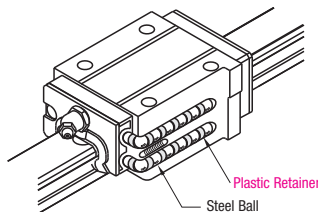
Industry Standard



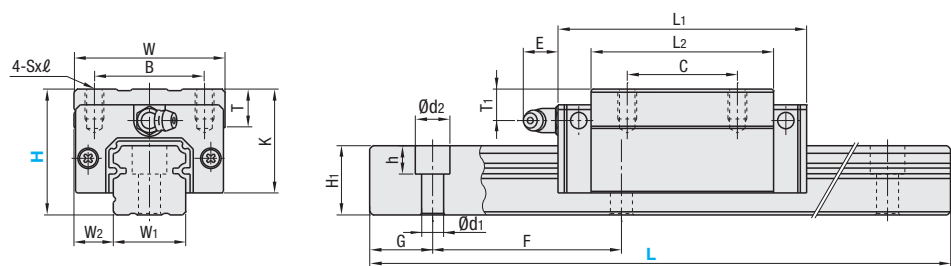
RoHS10

Material Hardness	Type		Block	Rail	L Dimension
	1 block	2 blocks			
Stainless Steel (EN 1.4125 Equiv.) 57HRC~	SSHRZ	SSH2RZ	SSHRB	SSHZL	Selectable
	SSHRLZ	SSH2RLZ		SSHZLF	Configurable

Heat Resistant Temperature: 0 ~ 50°C



Plastic Retainer
Steel Ball



For L Configurable, G dimensions differ from those shown in the table below. For details, see P. 531.

- Precautions for Use
- Blocks are equipped with retainers to prevent balls from falling off. For how to handle the blocks, see P. 525.
- For Interchangeable, Light Preload Type, rails and blocks can be interchanged.
- Straight grooves are provided on datum planes. Be sure to match the datum lines when using.
- Rails cannot be connected end to end.
- The accuracy of Linear Guides is guaranteed after mounting the rail (after fastening screws on the rail and pushing it onto the datum plane).
- Minor bending of the rail will be adjusted after being mounted and will not affect the performance.

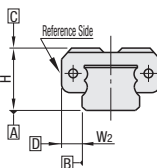
- Others
- Filled with Lithium soap based grease (Alvania Grease S2 by Showa Shell Sekiyu K.K.).
- Angled Grease Fitting Type
- Grease Fitting is screw-in type, and thus, can be repositioned.
- For Operating Life Calculation, see P. 527
- For operating life calculations, use our free calculation software from http://download.misumi.jp/mol/fa_soft.html.

Part Number		H	L	Block Dimension											Guide Rail Dimension					
Type				W	L ₁	B	C	Sxℓ	L ₂	K	T	Grease Fitting			H ₁	W ₁	W ₂	Counterbored Hole d1xd2xh	F	G
1 block	2 blocks											Mounting Hole	E	T ₁						
SSHRZ	SSH2RZ	30	220-1480	44	69.8	32	36	M5x6	50	25	12	M6xP0.75	11	5	18	20	12	6x9.5x8.5	60	20
SSHRLZ	SSH2RLZ																			
(Block)	(Rail)	40	220-1480	48	79	35	35	M6x9	58	33	12	M6xP0.75	11	10	22	23	12.5	7x11x9	60	20
SSHRB	SSHZL																			
	SSHZLF																			

H	Basic Load Rating		Allowable Static Moment		Mass		
	C (Dynamic) kN	Co (Static) kN	MA N·m	MB N·m	MC N·m	Block kg	Guide Rail kg/m
30	16.3	29.6	167	141	199	0.33	2.6
40	22.4	37.5	246	207	295	0.55	3.6

kgf=Nx0.101972

Preload and Accuracy Standards



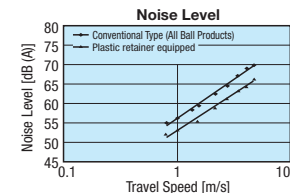
Interchangeable, Light Preload Type

Radial Clearance (μm)	
H30, 40	-5~0

Dimensional Accuracy (μm)	
Height H Tolerance	±20
Pair Variation of Height H	15
Width W ₂ Tolerance	±30
Pair Variation of Width W ₂	25
Running Parallelism of Plane C against Plane A	See P. 525
Running Parallelism of Plane D against Plane B	



Features of Plastic Retainers: Low noise levels and improved sound quality



- Lack of mutual contact between balls results in low noise levels and improved sound quality.
- Since there is no mutual contact abrasion between the balls, particle generation is less than those of conventional products.



Ordering
Example

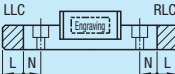
Part Number - L
SSHRZ30 - 640



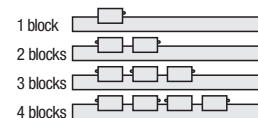
Alterations

Part Number - L - (RLC, LLC...etc.)
SSHRZ30 - 640 - RLC

H	Selectable L	Unit Price			
		Set		Rail	Block
30	220	SSHRZ	SSH2RZ	SSHZL	SSHRB
	280				
	340				
	400				
	460				
	520				
	580				
	640				
	700				
	760				
	820				
	880				
	940				
	1000				
	1060				
	1120				
40	1180				
	1240				
	1300				
	1360				
	1420				
	1480				
	220				
	280				
	340				
	400				
	460				
	520				
	580				
	640				
	700				
	760				
	820				
	880				
	940				
	1000				
	1060				
	1120				
	1180				
	1240				
	1300				
	1360				
	1420				
	1480				

Alterations	Code	Spec.							
<div><div><div>LLC</div><div><div><div>Rail End Cut</div><div></div></div></div><div>Rail is cut with the product ID facing out (datum on other side).</div></div><div>Left End Cut LLC</div><div>Cuts rail ends. Ordering Code LLC<table><tr><td>H</td><td>L Cut</td><td>N</td></tr><tr><td>30</td><td>10</td><td>10</td></tr><tr><td>40</td><td></td><td></td></tr></table></div><div>Right End Cut RLC</div><div><div>Applicable to Selectable Type only.</div><div>Overall length will be shorter by cutting.</div></div></div>	H	L Cut	N	30	10	10	40		
H	L Cut	N							
30	10	10							
40									
3-Block Specifications	B3	Adds 1 block to 2-Block product to ship as 3-Block separate item. Selection Example: SSHRZ30-400-B3							
4-Block Specifications	B4	Adds 2 blocks to 2-Block product to ship as 4-Block separate item. Selection Example: SSHRZ30-400-B4							

Position of Grease Fitting (Reference plane on the front side)



Additional Block Price

H	1Code	
	B3	B4
30		
40		
Selectable Shortest Rail Length for B3/B4		
H	B3 (3-Block)	B4 (4-Block)
30	340	400
40	400	460

Options for Linear Guide

Linear Guide Clamps	Rail Height Adjusting Blocks
 P608	 P609, 610
Block Derailment Prevention Parts / Dust Resistant Parts	Block / Rail Fixing Parts
Stopper Bolts P612	Rail Push Plates P612
Block Stopper Plates P612	Linear Locks P613
Rail Mounting Hole Caps P612	Linear Guide Lock Units P614