

Precision Ball Screws Compact Nut - Shaft Dia. 6, 8, Lead 1, 2

Accuracy Grade C3, C5, C7

Points of comparison between similar products | Consider using this product if the usage environment is a high-load, and high-frequency drive application.

Nut Type	Type	Accuracy Grade	Shaft Dia.	Lead	Screw Shaft		Nut	
					Material	Hardness	Material	Hardness
Compact Nut	BSX	C3	6, 8	1, 2	EN 1.7242 Equiv.	Carburized 58-62HRC	EN 1.7264 Equiv.	Carburized 58-62HRC
Standard Nut	BSS	C5	8	2				
	BSSE	C7						

Nut Type	Accuracy Grade	Part Number	Unit Price 1 ~ 4 pc(s).				
			L80-99	L100-160	L161-205	L206-210	L211-240
Compact Nut	C3	BSX0601					
		BSX0801					
		BSX0802	-				
Standard Nut	C5	BSS0802	-				
		C7	BSSE0802	-			

Ordering Example

Part Number - L

BSX0601 - 185

BSS0802 - 200

BSS0802L - 210 (L Type Greased)

BSS0802G - 210 (G Type Greased)

- Notes**
- Filled with lithium soap based grease (Alvania Grease S2 made by Showa Shell Sekiyu K.K.) (BSX is filled with Multemp Grease PS2 made by Kyodo Yushi Co., Ltd.)
 - Cautions: Do not let the nuts overrun or remove the nuts from the screw shafts. It may cause the balls to fall out or damage the ball recirculation parts.
 - Various grease options are available. For price and specifications, P686 BSX is not applicable.
 - For accuracy of Ball Screws, see P2223 and P2224.
 - For details of Support Units, see P753~P778.
 - Use one of the support unit accessory collars on the fastening nut side.

Alterations

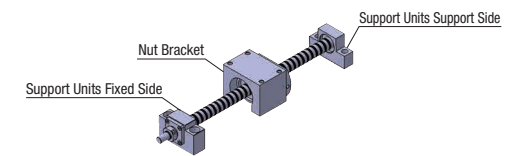
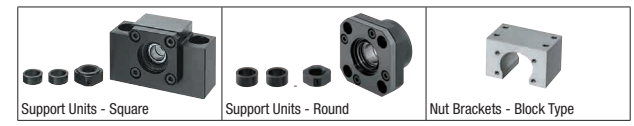
Part Number - L - (FC, KC ... etc.)

BSS0802 - 190 - KC3

Alterations	Code	Spec.
No Machining on Support Side Shaft End	NC	No machining added on the support side shaft end. Ordering Code NC BSX0601 is not applicable.
Ball Nut Orientation Reversed	RLC	Changes the nut direction. Ordering Code RLC
No Retaining Ring Groove on Support Side Shaft End	RNC	No Retaining Ring Groove on Support Side Shaft End. Ordering Code RNC Combination with FC is not available. BSX0601 is not applicable.
Change Support Side Shaft End Length	FC	Changes the length of the support side shaft end. FC=1mm Increment Ordering Code EN-JL 1030 Equiv. 10≤FC≤20 Y dimension is shortened. BSX0601 and 0801 are not applicable.

Alterations	Code	Spec.
Keyway on Fixed Side Shaft End Detailed Keyway Dimensions P684	KC	Adds a keyway on the fixed side shaft end. KC=1mm Increment Ordering Code KC6 3≤KC≤9 BSX0601 is not applicable.
Keyway on Fixed Side Shaft End	KLC	Adds a keyway at a customer specified area on the fixed side shaft end. (Keyway dim. is same as KC.) K, S=1mm Increment Ordering Code KLC-K5-S1 4≤K+S≤9 BSX0601 is not applicable.
Flat Machined on Fixed Side Shaft End	SC	Adds a flat on the fixed side shaft end. SC=1mm Increment Ordering Code SC7 5≤SC≤6 (BSX0601) 5≤SC≤9 (BS0801, 0802)
2 Flats Machined on Fixed Side Shaft End	SWC SGC SGC	Adds two flats on the fixed side shaft end. JIS-SWC: 90° Position SGC: 120° Position 1mm Increment Ordering Code SWC6 5≤SWC, SGC≤6 (BSX0601) 5≤SWC, SGC≤9 (BS0801, 0802)

Peripherals: Combination of the following parts is available.



Combination with Support Units

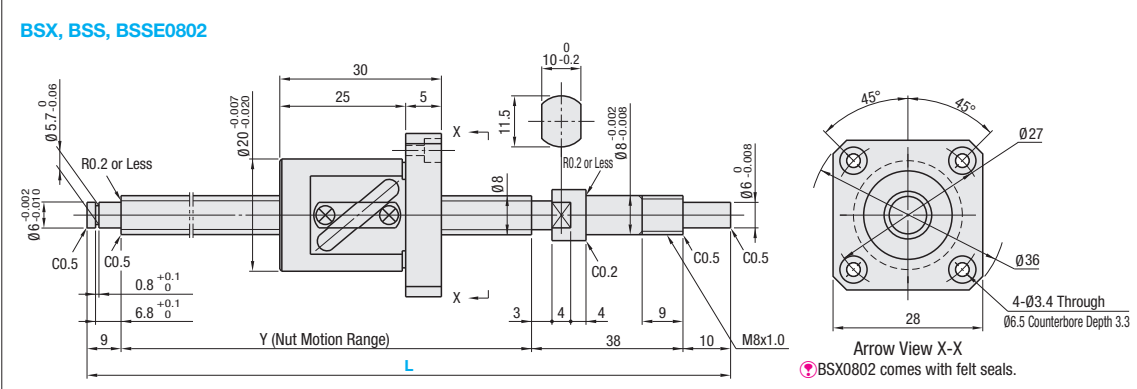
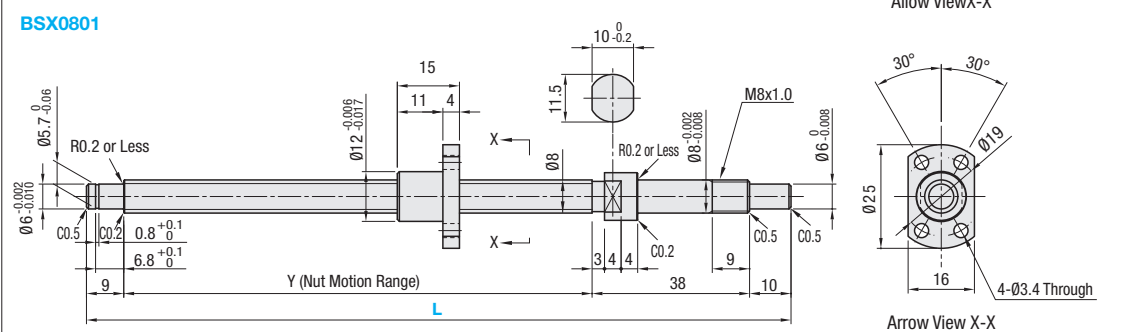
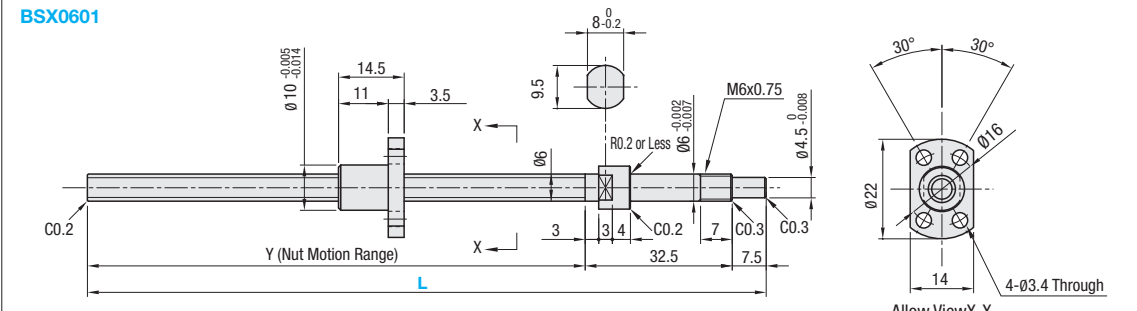
Ball Screw Part Number	Recommended Support Unit				
	Type	Screw Shaft O.D.	Lead	Part Number	Page
BSX BSS BSSE	06	01	BRW	6	P.767
			BSW	6	P.761
			BRW	8	P.767
			BUR	6	P.768
	08	01	BSW	8	P.761
			BUN	8	P.762

Combination with Nut Brackets

Ball Screw Part Number	Recommended Nut Bracket			
	Type	Screw Shaft O.D.	Lead	Page
BSX BSS BSSE	06	01	-	-
			BNFB BNFM BNFR BNFA	801X 802S
	08	01	801X	P.780
			802S	P.780

Other than the part numbers shown above, Support Units with various configurations and surface treatments are also available. (P.761 - P.778)

A variety of materials and surface treatments for Nut Brackets are available. (P.780)



Nut Type	Accuracy Grade	Part Number		1mm Increment L	Y	Ball Dia.	Ball Center Dia.	Screw Root Dia.	Number of Circuits	Basic Load Rating		Axial Play	Preload Torque N·cm	Twisting Direction
		Type	Lead							C (Dynamic) kN	Co (Static) kN			
Compact Nut	C3	BSX	06	01	80~205	L-40	0.800	6.24	(5.3)	1 turn, 3 rows	0.55	1.15	1.3 or Less	Right
			08	01	80~255						0.65	1.6	0 (Preloaded)	
Standard Nut	C5	BSS	08	02	100~240	L-57	1.5875	8.3	(6.6)	2.5 turns, 1 row	1.22	1.3	0.3~2.6	Right
					100~210						0.005 or Less	0.5 or Less		
					BSSE						0.030 or Less	-		

kgf=Nx0.101972