

Support Units - Fixed Side, Square

Standard Narrow Pitch Type

Similar parts listed page [P.761](#)

Points of comparison between similar products

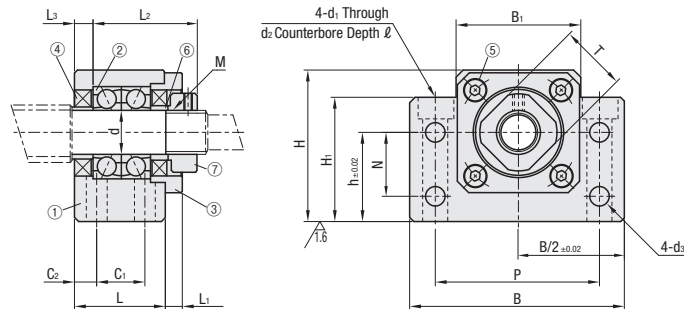
C-VALUE parts' load rating are different from similar parts. (For details, see P.754)
When considering C-VALUE parts, choose by comparing the specifications against similar parts. [P.759](#)



Type	Material	Surface Treatment
Fixed Side only	① ③	① ③ ⑥ ⑦
Fixed Side and Support Side SET	① ③ ⑥ ⑦	① ③ ⑥ ⑦
C-BSFW	EN 1.1191 Equiv.	EN 1.0038 Equiv. Black Oxide

Number	Part Name	Quantity
①	Bearing Housing	1
②	Oversea manufactured angular contact bearing Grade 5	1 Set
③	Cover	1
④	Oil Seal	2
⑤	Hex Socket Head Cap Screw	4
⑥	Collar	2
⑦	Bearing Nut (with Set Piece)	1

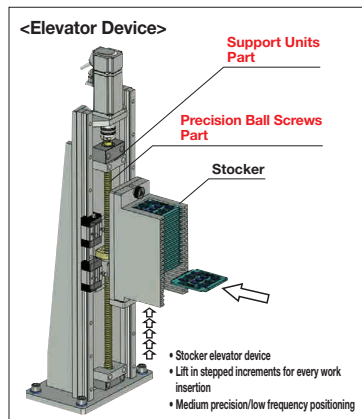
- ④ d=6 and 8 come with one Oil Seal ④.
- Do not disassemble ①, ②, ③, ④ and ⑤, as they must remain assembled.
- When used together with a MISUMI ball screw, there is one support unit accessory collar spare.



Part Number	Support Side SET	d	L	L ₁	L ₂	L ₃	B	H	h	B ₁	H ₁	P	N	C ₁	C ₂	d ₁	d ₂	d ₃	ℓ	M (Fine Thread)	T	Oil Seal Applicable Shaft Dia.	C-BSFW Unit Price	C-BSFW-SET Unit Price	
C-BSFW	10S	-SET (Only when purchased in Sets)	10	25	5	29	5	60	39	22	34	32.5	46	15	13	6	6.6	11	5.5	5	M10x1.0	16	12		
	10																							14	
	12																							15	
	15																							20	
20		20	35	8	43	8	88	60	34	52	50	70	22	19	8	9	14	6.6	8.5	M20x1.0	30	27.5			

Ordering Example
Part Number
C-BSFW15 (Fixed-side single type)
C-BSFW15-SET (SET part type)

- For details of Bearings mounting interface accuracies of Support Units, see [P.759](#)
- Ball Screw Compatibility Chart [P.756](#)
- Store Accessories with care since they are required when assembling.
- No.15 and No.20 are not used with MISUMI ball screws. See [P.758](#) "Ball Screw/Support Unit Mapping Table" for third-party ball screws. Look at the ball screw shaft diameters $\varnothing 20$, $\varnothing 28$, $\varnothing 30$, and $\varnothing 32$.



Support Units - Support Side, Square

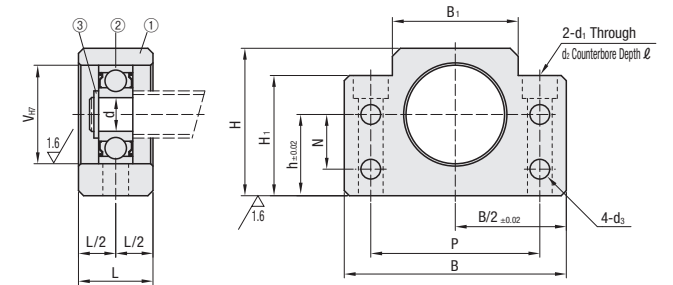
Standard Narrow Pitch Type

Similar parts listed page [P.762](#)



Type	Material	Surface Treatment
C-BUFN	EN 1.1191 Equiv.	Black Oxide

Number	Part Name	Quantity
①	Housing	1
②	Oversea manufactured radial bearing	1
③	Retaining Ring (STWN, S)	1

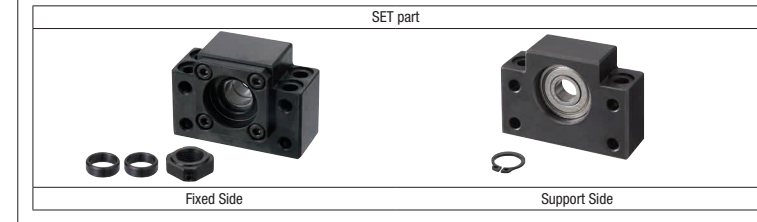


Part Number	d	L	B	H	h	B ₁	H ₁	P	N	V	d ₁	d ₂	d ₃	ℓ	Bearing Part Number	Retaining Ring	C-BUFN Unit Price									
C-BUFN	10	8	60	39	22	34	32.5	46	15	22	6.6	11	5.5	5	B608ZZ	STWN, S8										
	12	10															20	43	25	35	18	26	1.5	B6000ZZ	STWN, S10	
	15	15															70	48	28	40	38	54	32	6.5	B6002ZZ	STWN, S15
	20	20															88	60	34	52	50	70	28	42	9	14

Ordering Example
Part Number
C-BUFN15 (Support side, separate item)

- For details of Bearings mounting interface accuracies of Support Units, see [P.759](#)
- Ball Screw Compatibility Chart [P.756](#)
- Store Accessories with care since they are required when assembling.
- No.15 and No.20 are not used with MISUMI ball screws. See [P.758](#) "Ball Screw/Support Unit Mapping Table" for third-party ball screws. Look at the ball screw shaft diameters $\varnothing 20$, $\varnothing 28$, $\varnothing 30$, and $\varnothing 32$.

SET part overview
For customers using in conjunction with fixed side and support side We recommend a SET, which allows the fixed side and support side to be ordered as one set. 5% price reduction when ordering in SETS



<SET parts>

SET Part Number	SET parts	
	Fixed Side Part Number	Support Side Part Number
C-BSFW10-SET	C-BSFW10	C-BUFN10
C-BSFW10S-SET	C-BSFW10S	C-BUFN10
C-BSFW12-SET	C-BSFW12	C-BUFN12
C-BSFW15-SET	C-BSFW15	C-BUFN15
C-BSFW20-SET	C-BSFW20	C-BUFN20