

Support Units - Fixed Side, Round Standard

Points of comparison between similar products | Consider using this product if the usage environment is a high-load, and high-frequency drive application.

Industry Standard



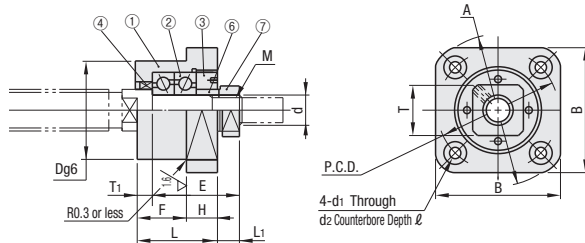
Number	Part Name	Quantity
①	Bearing Housing	1
②	Japanese standard angular contact bearing Grade 5	1 Set
③	Cover	1
④	Oil Seal	2
⑤	Hex Socket Head Cap Screw*	4
⑥	Collar	2
⑦	Bearing Nut (with Set Piece)	1

- No oil seal ④ is attached in No. 6.
- One oil seal ④ is attached in No. 6L/8S/8.
- Do not disassemble ①, ②, ③, ④ and ⑤, as they must remain assembled.
- BSWR bearing is filled with low dust generation grease.
- Screws ⑤ for BRWR/BRWN are of Stainless Steel Type.
- When used together with a MISUMI ball screw, there is one support unit accessory collar spare.

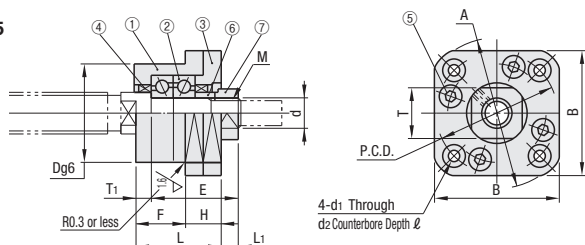
Type	Material	Surface Treatment
Fixed Side only	① ③	⑥ ⑦
BRW	EN 1.1191 Equiv.	EN 1.0038 Equiv.
BRWN	EN 1.1191 Equiv.	EN 1.0038 Equiv.
BRWR	EN 1.1191 Equiv.	EN 1.0038 Equiv.

For No.8S and 10S, the I.D. of oil seal is smaller than the previous No.8S and No.10S versions.

d=6~8



d=10~25



Part Number		Support Side SET	d	L	H	F	E	D	A	P.C.D.	B	L1	T1	d1	d2	ℓ	M (Fine Thread)	T	Oil Seal Applicable Shaft Dia.		
Type	No.																				
BRW BRWN BRWR	6L	-SET (Only when purchasing in Sets)	6	20	7	13	22.5	22	36	28	28	6	3.5	3.4	6.5	4		M6x0.75	12	10	
	6								35											2.9	5.5
	8S		8	23	9	14	26	28	43	35	35	7	4	3.4	6.5	4		M8x1.0	14	10	
	8																			11.5	
	10S		10	29	13	16	29.5	34	52	42	42	5.5	5	4.5	8	6		M10x1.0	17	12	
	10																			14	
	12		12	36	54	44	44											M12x1.0	19	15	
	15		15	32	15	17	38	40	63	50	52	12	6	5.5	9.5				M15x1.0	22	20
	20		20	52	22	30	52	57	85	70	68	10	10	6.6	11	10			M20x1.0	30	25
	25		25	57	27	30	59	63	98	80	79	12	10	9	15	13			M25x1.5	35	31

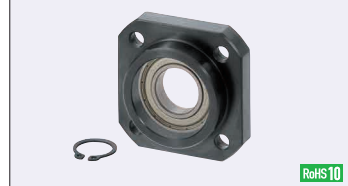
Ordering Example
Part Number
BRW15 (Fixed-side single type)
(SET part type)

- For details of Bearings mounting interface accuracies of Support Units, see Details of Bearing Nut P759
- LTBC Plating products are filled with low dust generation grease for cleanrooms.
- Store Accessories with care since they are required when assembling.

Part Number	BRW	BRW-SET	BRWN	BRWN-SET	BRWR	BRWR-SET
Type	No.	Unit Price	Unit Price	Unit Price	Unit Price	Unit Price
BRW	6L	1 ~ 10 pc(s).	1 ~ 10 pc(s).	1 ~ 10 pc(s).	1 ~ 10 pc(s).	1 ~ 10 pc(s).
BRWN	8S	1 ~ 10 pc(s).	1 ~ 10 pc(s).	1 ~ 10 pc(s).	1 ~ 10 pc(s).	1 ~ 10 pc(s).
BRWR	10S	1 ~ 10 pc(s).	1 ~ 10 pc(s).	1 ~ 10 pc(s).	1 ~ 10 pc(s).	1 ~ 10 pc(s).
	12	1 ~ 10 pc(s).	1 ~ 10 pc(s).	1 ~ 10 pc(s).	1 ~ 10 pc(s).	1 ~ 10 pc(s).
	15	1 ~ 10 pc(s).	1 ~ 10 pc(s).	1 ~ 10 pc(s).	1 ~ 10 pc(s).	1 ~ 10 pc(s).
	20	1 ~ 10 pc(s).	1 ~ 10 pc(s).	1 ~ 10 pc(s).	1 ~ 10 pc(s).	1 ~ 10 pc(s).
	25	1 ~ 10 pc(s).	1 ~ 10 pc(s).	1 ~ 10 pc(s).	1 ~ 10 pc(s).	1 ~ 10 pc(s).

Support Units - Support Side, Round <Standard> Standard

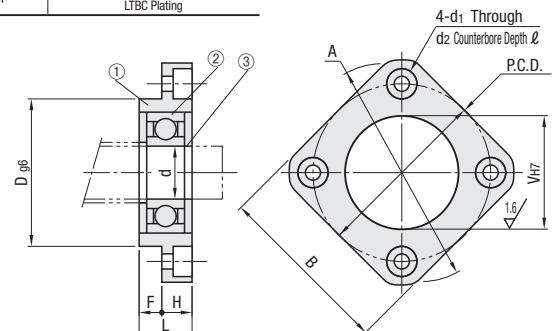
Industry Standard



Number	Part Name	Quantity
①	Housing	1
②	Japanese made radial bearing	1
③	Retaining Ring (STWN, S)	1

- BURR bearing is Stainless Steel Type filled with low dust generation grease.
- * Retaining rings ③ and ④ of BURR, BURM and BTRM are Stainless Steel Type.

Type Standard	Material	Surface Treatment
BUR	EN 1.1191 Equiv.	Black Oxide
BURM	EN 1.1191 Equiv.	Electroless Nickel Plating
BURR	EN 1.1191 Equiv.	LTBC Plating



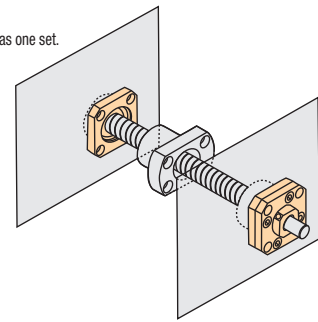
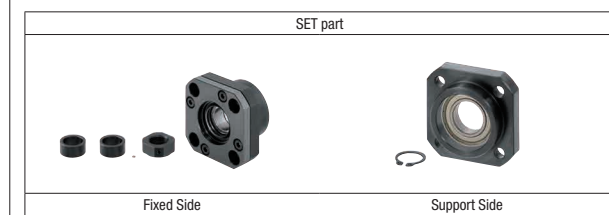
Part Number	Type	No.	d	L	H	F	D	A	P.C.D.	B	V	d1	d2	ℓ	Bearing Type	Retaining Ring	BUR Unit Price	BURM Unit Price	BURR Unit Price
BUR	6	6	6	10	6	4	22	36	28	28	17	3.4	6.5	4	B606ZZ	STWN, S6	1 ~ 10 pc(s).	1 ~ 10 pc(s).	1 ~ 10 pc(s).
BURM	10	8	12	7	5	28	43	35	35	22	3.4	6.5	8	4	B608ZZ	STWN, S8			
BURR	12	10	15	7	8	34	52	42	42	26	4.5	8	8		B6000ZZ	STWN, S10			
	15	15	17	9	8	40	63	50	52	32	5.5	9.5	5.5		B6002ZZ	STWN, S15			
	20	20	20	11	9	57	85	70	68	47	6.6	11	6.5		B6204ZZ	STWN, S20			
	25	25	24	14	10	63	98	80	79	52	9	14	8.5		B6205ZZ	STWN, S25			

Ordering Example
Part Number
BUN15 (Support side, separate item)

- For details of Bearings mounting interface accuracies of Support Units, see Details of Bearing Nut P759
- LTBC Plating products are filled with low dust generation grease for cleanrooms.
- Store Accessories with care since they are required when assembling.

SET part overview

For customers using in conjunction with fixed side and support side
We recommend a SET, which allows the fixed side and support side to be ordered as one set.
5% price reduction when ordering in SETs



<SET parts>

Black Oxide

SET Part Number	Fixed Side Part Number	Support Side Part Number
BRW6L-SET	BRW6L	BUR6
BRW6-SET	BRW6	BUR6
BRW8S-SET	BRW8S	BUR6
BRW8-SET	BRW8	BUR6
BRW10S-SET	BRW10S	BUR10
BRW10-SET	BRW10	BUR10
BRW12-SET	BRW12	BUR12
BRW15-SET	BRW15	BUR15
BRW20-SET	BRW20	BUR20
BRW25-SET	BRW25	BUR25

Electroless Nickel Plating

SET Part Number	Fixed Side Part Number	Support Side Part Number
BRWN6L-SET	BRWN6L	BURM6
BRWN6-SET	BRWN6	BURM6
BRWN8S-SET	BRWN8S	BURM6
BRWN8-SET	BRWN8	BURM6
BRWN10S-SET	BRWN10S	BURM10
BRWN10-SET	BRWN10	BURM10
BRWN12-SET	BRWN12	BURM12
BRWN15-SET	BRWN15	BURM15
BRWN20-SET	BRWN20	BURM20
BRWN25-SET	BRWN25	BURM25

LTBC Plating

SET Part Number	Fixed Side Part Number	Support Side Part Number
BRWR6L-SET	BRWR6L	BURR6
BRWR6-SET	BRWR6	BURR6
BRWR8S-SET	BRWR8S	BURR6
BRWR8-SET	BRWR8	BURR6
BRWR10S-SET	BRWR10S	BURR10
BRWR10-SET	BRWR10	BURR10
BRWR12-SET	BRWR12	BURR12
BRWR15-SET	BRWR15	BURR15
BRWR20-SET	BRWR20	BURR20
BRWR25-SET	BRWR25	BURR25