

Lead Screw Support Units Square Type

Fixed Side Radial Bearing Type

When using Fixed Side Support Units combined with Support Side Support Units

Support Unit Sets combined Fixed Side Support Unit with Support Side Support Unit are available for lower prices.
Add -SET to part number of Fixed Side Support Units to select Support Unit Sets.

Lead Screw Support Units Square Type

Support Side



Listed Support Side Support Unit Sets are also available by adding -SET to part number of Fixed Side Support Units on P.792.



Q	Fixed Side Support Unit		Accessory Dimensions		
	Bearing Nut	Collar Dimensions	I.D.	O.D.	Thickness
8	M8x1.0	14	8	11.5	3
10	M10x1.0	17	10	14	3
12	M12x1.0	19	12	15	3
15	M15x1.0	22	15	20	3

Part Number	Support Unit Set	A	B	C	F	h	J	H	G	T	L	R	(l)	X	d	E	(l1)	Bearing Nut	Clamp Lever	Bearing	Allowable Axial Load (N)
MTWZ	8 -SET	52	48	25	38	30	35	20	13	60.5	22	22	4.5	6.6	6	24		BNR8	CLDM6-32-M	B608ZZ	1300
MTWZ-S	10 (Only When Purchasing Support Units In Set)	70	53	36	52	35	34	25	13	65.5	24	23	4.8	4.5	9	8	27	BNR10	CLDM6-40-M	B6000ZZ	2300
MTWZ-CP	12	70	58	36	52	40	39	30	13	65.5	24	23	4.5	4.5	10	27	BNR12	CLDM6-40-M	B6001ZZ	2600	
MTWZ-LP	15	80	62	41	60	40	39	30	17	70.5	27	25	5.8	5.5	11	31	BNR15	CLDM6-40-M	B6002ZZ	2900	

Part Number	Support Unit Set	A	B	C	F	h	J	H	G	T	L	R	(l)	X	d	E	(l1)	Bearing Nut	Clamp Lever	Bearing	Allowable Axial Load (N)
MTWZ	8 -SET	52	48	25	38	30	35	20	13	60.5	22	22	4.5	6.6	6	24		BNR8	CLDM6-32-M	B608ZZ	1300
MTWZ-S	10 (Only When Purchasing Support Units In Set)	70	53	36	52	35	34	25	13	65.5	24	23	4.8	4.5	9	8	27	BNR10	CLDM6-40-M	B6000ZZ	2300
MTWZ-CP	12	70	58	36	52	40	39	30	13	65.5	24	23	4.5	4.5	10	27	BNR12	CLDM6-40-M	B6001ZZ	2600	
MTWZ-LP	15	80	62	41	60	40	39	30	17	70.5	27	25	5.8	5.5	11	31	BNR15	CLDM6-40-M	B6002ZZ	2900	

Support Side Support Unit Sets are available at 5 percent reduced price compared to Without Support Side Support Units.

Part Number	Support Unit Set	MTWZ	MTWZ-SET	MTWZ-S	MTWZ-S-SET	MTWZ-CP	MTWZ-CP-SET	MTWZ-LP	MTWZ-LP-SET
MTWZ	8 -SET								
MTWZ-S	10 (Only When Purchasing Support Units In Set)								
MTWZ-CP	12								
MTWZ-LP	15								

For Support Side Support Unit (MTUZ) details, P. 792.

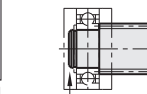


Support Side Support Unit can be purchased as the separate unit. Instead of this, however, purchasing it in combination with Fixed Side Support Unit (P.791) as set is the more economical.

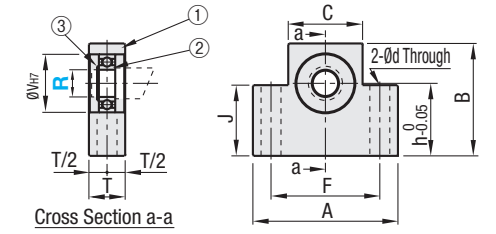


Type	Material	Surface Treatment
MTUZ	EN 1.1191 Equiv.	Black Oxide

How to use Retaining Ring for Shaft



Retaining Ring for Shaft (Accessory) should be used for fixing the shaft part. Use Lead Screws for Support Units (P.789) in combination with this ring, or select a product with the retaining shaft groove added on the shaft part.



This is the same product as Support Side Set in P.791

Number	Part Name	Quantity
1	Housing	1
2	Radial Bearing	1
3	Retaining Ring for Shaft (Included)	1

Contrary to image on the photo, Radial Bearing on (2), as well as Retaining Ring for Shaft, is already included with the support unit when the support unit is shipped.

Part Number	Type	R	A	B	C	F	h	J	V	T	d	Bearing Type	Retaining Ring for Shaft	MTUZ	
														Unit Price	Volume Discount Rate
MTUZ	8	52	48	25	38	30	35	22	20	6.6	B608ZZ	NETW5	1 ~ 4 pc(s)	5 ~ 10 pcs.	
	10	70	53	36	52	35	34	26	9	B6000ZZ	STWN10				
	12	70	58	36	52	40	39	28	9	B6001ZZ	STWN12				
	15	80	62	41	60	40	39	32	11	B6002ZZ	STWN15				

Ordering Example Part Number MTUZ15



Position Indicators are separately sold. P. 811, 812

Easy Assembly Design Dimensions Table

Type	Lead Screw		Lead Screw Support Units				Position Indicator Compact / Large		
	Shaft Dia.	Pitch	Fixed Side		Support Side		Type	Spindle Pitch	Alterations
			Type	Bearing I.D.	Type	Bearing I.D.			
MTW (L) K MTWB (L) K RMTW (L) K MTSW (L) K	12	2	MTWZ MTWZ-S MTWZ-CP MTWZ-LP	8	MTUZ	8	D□□□□-	2	-CSE6
	14	3		10		3		-CSE8	
	16	3		12		3		-CSE10	
	18	4		10		4		-CSE10	
	20	4		15		4		-CSE12	
22	5		5	-CSE12					
25	5		5	-CSE12					

By adding to (L) to a part number, the Reverse Screw Type is delivered. For position indicators, this Screw Type should be specified.
Precaution for Use: Use the position indicators within maximum rotational speed. P. 811, 812

For Digital Position Indicators Large, Spindle Pitch 2 cannot be selected.

Support Unit Mounting Procedure



- Insert the lead screw shaft into the fixed side support unit.
- After slipping a collar on, thread the included bearing nut on and temporarily tighten at 1/3 of the specified tightening torque. Mount the support side unit on the support end of the shaft and mount.
- While rotating the screw shaft, gradually tighten the bearing nut to obtain smooth motion from end to end.
- When smooth motion is obtained, tighten to full tightening torque to finish.

M	Nut Tightening Torque (N · cm)	Part Number
8	490	BNR8
10	930	BNR10
12	1370	BNR12
15	2350	BNR15

Value is for reference only.