

# Lead Screw Support Units Square Type

## Fixed Side Radial Bearing Type

When using Fixed Side Support Units combined with Support Side Support Units

Support Unit Sets combined Fixed Side Support Unit with Support Side Support Unit are available for lower prices.  
Add -SET to part number of Fixed Side Support Units to select Support Unit Sets.

# Lead Screw Support Units Square Type

## Support Side



☞ Listed Support Side Support Unit Sets are also available by adding -SET to part number of Fixed Side Support Units on **P.792**.

### Fixed Side Support Unit



RoHS10

### Stop Plate Set



RoHS10

### Stop Plate Set for Digital Position Indicators Compact Mount



RoHS10

### Stop Plate Set for Large Position Indicator Mount



RoHS10

### Support Side Support Unit (MTUZ)

☞ Available as Set by adding -SET to a part number of Fixed Side Support Unit



RoHS10

Q	Fixed Side Support Unit		Accessory Dimensions		
	Bearing Nut	Collar Dimensions	I.D.	O.D.	Thickness
8	M8x1.0	Applicable Wrench Size	8	11.5	3
10	M10x1.0		10	14	3
12	M12x1.0		12	15	3
15	M15x1.0		15	20	3

Part Number	Support Unit Set	A	B	C	F	h	J	H	G	T	L	R	(L)	X	d	E	(L1)	Bearing Nut	Clamp Lever	Bearing	Allowable Axial Load (N)
MTWZ	-SET	52	48	25	38	30	35	20	13	60.5	22	22		4.5	6.6	6	24	BNR8	CLDM6-32-M	B608ZZ	1300
MTWZ-S	(Only When Purchasing Support Units In Set)	70	53	36	52	35	34	25	13	65.5	24	23	4.8	4.5	9	8	27	BNR10		B600ZZ	2300
MTWZ-CP		70	58	36	52	40	39	30	13	24	24	23		4.5		10	27	BNR12	CLDM6-40-M	B6001ZZ	2600
MTWZ-LP		80	62	41	60	40	39	30	17	70.5	27	25	5.8	5.5	11	12	31	BNR15		B6002ZZ	2900



Part Number	Support Unit Set	A	B	C	F	h	J	H	G	T	L	R	(L)	X	d	E	(L1)	Bearing Nut	Clamp Lever	Bearing	Allowable Axial Load (N)
MTWZ	-SET	52	48	25	38	30	35	20	13	60.5	22	22		4.5	6.6	6	24	BNR8	CLDM6-32-M	B608ZZ	1300
MTWZ	-SET	70	53	36	52	35	34	25	13	65.5	24	23	4.8	4.5	9	8	27	BNR10		B600ZZ	2300
MTWZ-S	-SET	70	58	36	52	40	39	30	13	24	24	23		4.5		10	27	BNR12	CLDM6-40-M	B6001ZZ	2600
MTWZ-CP	-SET	80	62	41	60	40	39	30	17	70.5	27	25	5.8	5.5	11	12	31	BNR15		B6002ZZ	2900

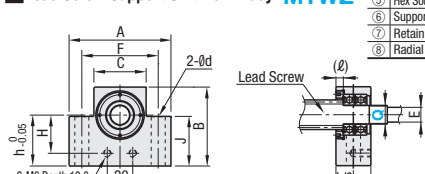
Type		Support Unit Set	Support Unit Fixed Side	Stop Plate Set	Stop Plate Set for Digital Position Indicators Compact Mount	Stop Plate Set for Large Position Indicator Mount
Not included		MTWZ	MTWZ-S	MTWZ-CP	MTWZ-LP	
Included		MTWZ-SET	MTWZ-S-SET	MTWZ-CP-SET	MTWZ-LP-SET	

### Parts Details

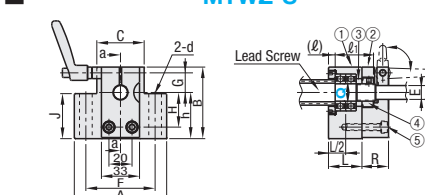
Number	Part Name	MTWZ	-S/-CP/-LP	-SET	Material	Surface Treatment
①	Fixed Side Support Unit	1	1	1	EN 1.1191 Equiv.	
②	Collar	1	1	1	EN 1.0038 Equiv.	
③	Bearing Nut (w/ Thread Protector)	1	1	1	EN 1.0038 Equiv.	
④	Stop Plate Set	-	1	(1)	EN 1.0038 Equiv.	Black Oxide
⑤	Hex Socket Head Cap Screw	-	2	(2)	EN 1.7220 Equiv.	
⑥	Support Side Support Unit	-	-	1	EN 1.1191 Equiv.	
⑦	Retaining Ring for Shaft	-	-	1	Spring Steel	* No treatment
⑧	Radial Bearing	-	-	1	EN 1.3505 Equiv.	* No treatment

☞ Two preload-adjusted bearings are integrated in a Fixed Side Support Unit.  
☞ As one of the specifications for Support Side Support Unit, any bearing is not integrated in the main body when the product is shipped.  
☞ Values in ( ) are applicable only when support units are purchased in set.  
☞ Only Q8 product are surface-treated with Trivalent Chromate.  
☞ Drawing for MTWZ-S Stop Plate Set only

### Lead Screw Support Unit Main Body MTWZ

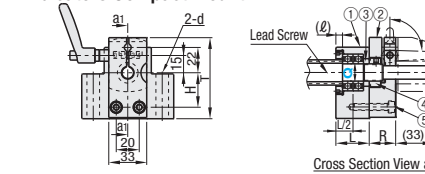


### MTWZ-S



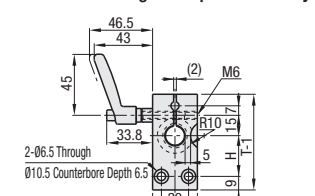
Cross Section View a-a

### Stop Plate Set for Digital Position Indicators Compact Mount MTWZ-CP

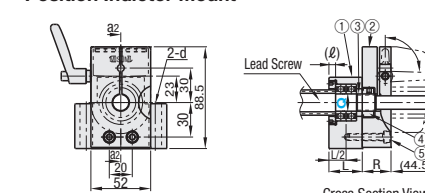


Cross Section View a1-a1

### MTWZ-CP Drawing for Stop Plate Set only

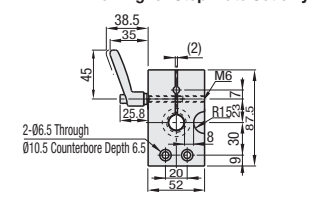


### Stop Plate Set for Large Position Indicator Mount MTWZ-LP (Q12, 15)



Cross Section View a2-a2

### MTWZ-LP Drawing for Stop Plate Set only



☞ Do not use without inserting the screw shaft (empty tightening). It may deform, causing it to be unusable.  
☞ The clamp lever cannot be mounted on the opposite side.  
☞ A collar for the clamp lever is not included with Q8. The clamp lever mounting dimensions will be the same as the Large Type.



☞ Support Side Support Unit can be purchased as the separate unit. Instead of this, however, purchasing it in combination with Fixed Side Support Unit (**P.791**) as set is the more economical.



RoHS10

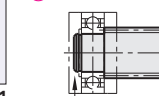
☞ This is the same product as Support Side Set in **P.791**

Number	Part Name	Quantity
①	Housing	1
②	Radial Bearing	1
③	Retaining Ring for Shaft (Included)	1

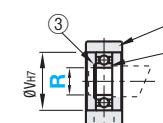
☞ Contrary to image on the photo, Radial Bearing on ②, as well as Retaining Ring for Shaft, is already included with the support unit when the support unit is shipped.

Type	Material	Surface Treatment
MTUZ	EN 1.1191 Equiv.	Black Oxide

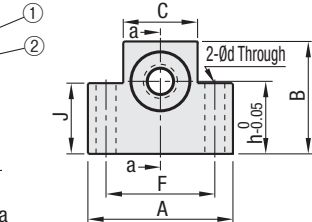
### How to use Retaining Ring for Shaft



☞ Retaining Ring for Shaft (Accessory) should be used for fixing the shaft part. Use Lead Screws for Support Units (**P.789**) in combination with this ring, or select a product with the retaining shaft groove added on the shaft part.



Cross Section a-a



Part Number		A	B	C	F	h	J	V	T	d	Bearing Type	Retaining Ring for Shaft	Unit Price	Volume Discount Rate
MTUZ	8	52	48	25	38	30	35	22	20	6.6	B608ZZ	NETW5	1 ~ 4 pc(s)	5 ~ 10 pcs.
	10	70	53	36	52	35	34	26		9	B600ZZ	STWN10		
	12	70	58	36	52	40	39	28		9	B6001ZZ	STWN12		
	15	80	62	41	60	40	39	32		11	B6002ZZ	STWN15		

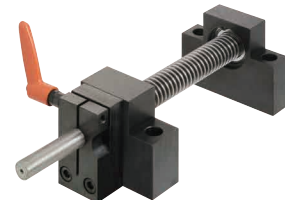


Ordering Example Part Number  
MTUZ15



Example

### Stop Plate Set



### Stop Plate Set for Digital Position Indicators Compact Mount



### Stop Plate Set for Large Position Indicator Mount



☞ Position Indicators are separately sold. ☞ **P. 811, 812**

### Easy Assembly Design Dimensions Table

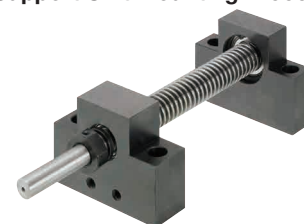
Lead Screw			Lead Screw Support Units				Position Indicator Compact / Large		
Type	Shaft Dia.	Pitch	Fixed Side		Support Side		Type	Spindle Pitch	Alterations
			Type	Bearing I.D.	Type	Bearing I.D.			
MTW (L) K MTWB (L) K RMTW (L) K MTSW (L) K	12	2	MTWZ MTWZ-S MTWZ-CP MTWZ-LP	8	MTUZ	8	D□□□□-	2	-CSE6
	14	3		10		10		3	-CSE8
	16	3		12		12		3	-CSE10
	18	4		15		15		4	-CSE10
	20	4						4	-CSE12
	22	5						5	-CSE12
	25	5						5	-CSE12

☞ By adding to (L) to a part number, the Reverse Screw Type is delivered. For position indicators, this Screw Type should be specified.

☞ Precaution for Use: Use the position indicators within maximum rotational speed. ☞ **P. 811, 812**

\*For Digital Position Indicators Large, Spindle Pitch 2 cannot be selected.

### Support Unit Mounting Procedure



- Insert the lead screw shaft into the fixed side support unit.
- After slipping a collar on, thread the included bearing nut on and temporarily tighten at 1/3 of the specified tightening torque. Mount the support side unit on the support end of the shaft and mount.
- While rotating the screw shaft, gradually tighten the bearing nut to obtain smooth motion from end to end.
- When smooth motion is obtained, tighten to full tightening torque to finish.

M	Nut Tightening Torque (N · cm)	Part Number
8	490	BNR8
10	930	BNR10
12	1370	BNR12
15	2350	BNR15

☞ Value is for reference only.

☞ For Support Side Support Unit (MTUZ) details, ☞ **P. 792**.