

# Lead Screw Support Units - Round

## Fixed Side Radial Bearing Type

When using Fixed Side Support Units combined with Support Side Support Units

Support Unit Sets combined Fixed Side Support Unit with Support Side Support Unit are available for lower prices.  
Add -SET to part number of Fixed Side Support Units to select Support Unit Sets.



☞ Listed Support Side Support Unit Sets are also available by adding -SET to part number of Fixed Side Support Units on **P.794**.

### Support Unit Main Body



RoHS10

### Stop Plate Set



RoHS10

### Stop Plate Set for Digital Position Indicators Compact Mount



RoHS10

### Stop Plate Set for Large Position Indicator Mount



RoHS10

### Support Side Support Unit (MRUZ)

☞ Available as Set by adding -SET to a part number of Fixed Side Support Unit



RoHS10

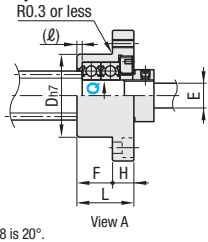
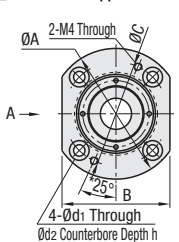
Q	Fixed Side Support Unit		Accessory Dimensions			
	Bearing Nut	Collar Dimensions				
	M	Fine	Applicable Wrench Size	I.D.	O.D.	Thickness
8	M8x1.0	14	14	8	11.5	5
10	M10x1.0	17	10	10	14	5
12	M12x1.0	19	12	15	5	
15	M15x1.0	22	15	20	6	

Part Number	Type	Support Unit	L	H	F	D	A	A1	C	B	d1	d2	h	R	(L)	(L1)	(L2)	G	E	Bearing Nut	Clamp Lever	Bearing Type	Allowable Axial Load (N)
MRWZ	8	-SET	22	14	28	45	53	35	35	3.4	7	4	17		26			6.5	6	BNR8	CLDFC4-7-M	B608ZZ	1300
MRWZ-S	10	(Only when purchasing support units in set)	24	16	34	52	54	42	42	4.5	8	5	18		29		5	7.5	8	BNR10		B6000ZZ	2300
MRWZ-CP	12				36	54		44	44									8.5	10	BNR12		B6001ZZ	2600
MRWZ-LP	15		27	10	17	40	63	63	50	52	5.5	10	16	20		34		9.5	12	BNR15		B6002ZZ	2900

Ordering Example	Part Number	TYPE	Q	(-SET)
	MRWZ	15		
	MRWZ	12		-SET
	MRWZ-S	12		
	MRWZ-CP	15		-SET

Support Unit	Support Unit Main Body	Type		
		Stop Plate Set	Stop Plate Set for Digital Position Indicators Compact Mount	Stop Plate Set for Large Position Indicator Mount
Not included	MRWZ	MRWZ-S	MRWZ-CP	MRWZ-LP
Included	MRWZ-SET	MRWZ-S-SET	MRWZ-CP-SET	MRWZ-LP-SET

### Lead Screw Support Unit Main Body MRWZ

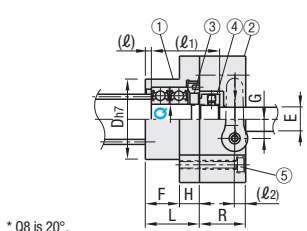
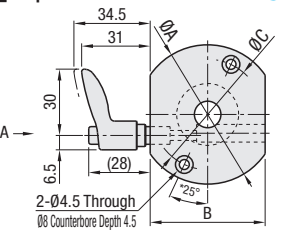


### Parts Details

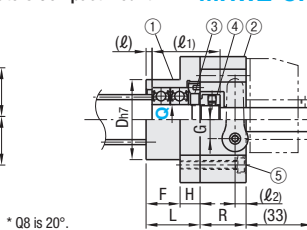
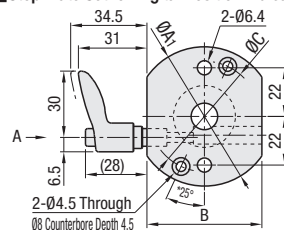
Number	Part Name	MRWZ	-S/-CP/-LP	-SET	Material	Surface Treatment
①	Fixed Side Support Unit	1	1	1	EN 1.1191 Equiv.	
②	Collar	1	1	1	EN 1.0038 Equiv.	
③	Bearing Nut (w/ Thread Protector)	1	1	1	EN 1.0038 Equiv.	Black Oxide
④	Stop Plate Set	-	1	(1)	EN 1.0038 Equiv.	
⑤	Hex Socket Head Cap Screw	-	2	(2)	EN 1.7220 Equiv.	
⑥	Support Side Support Unit	-	-	1	EN 1.1191 Equiv.	
⑦	Retaining Ring for Shaft	-	-	1	Spring Steel	* No treatment
⑧	Radial Bearing	-	-	1	EN 1.3535 Equiv.	No treatment

☞ Two preload-adjusted bearings are integrated in a Fixed Side Support Unit.  
☞ As one of the specifications for Support Side Support Unit, any bearing is not integrated in the main body when the product is shipped.  
☞ Values in ( ) are applicable only when support units are purchased in set.  
☞ \*⑦ Only Q8 product are surface-treated with Trivalent Chromate.

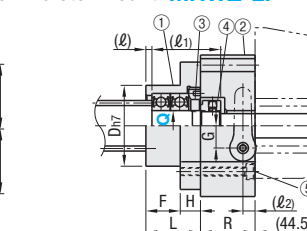
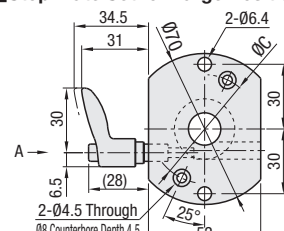
### Stop Plate Set MRWZ-S



### Stop Plate Set for Digital Position Indicators Compact Mount MRWZ-CP



### Stop Plate Set for Large Position Indicator Mount MRWZ-LP



☞ Do not use without inserting the screw shaft (empty tightening). It may deform, causing it to be unusable.

☞ A collar for the clamp lever is not included with Q8. The clamp lever mounting dimensions will be the same as the Large Type. ☞ The clamp lever cannot be mounted on the opposite side.

☞ Support Side Support Unit Sets are available at 5 percent reduced price compared to Without Support Side Support Units.

Part Number	Support Unit	MRWZ	MRWZ-SET	MRWZ-S	MRWZ-S-SET	MRWZ-CP	MRWZ-CP-SET	MRWZ-LP	MRWZ-LP-SET
Type	Q	Unit Price	Unit Price	Unit Price	Unit Price	Unit Price	Unit Price	Unit Price	Unit Price
MRWZ	8								
MRWZ-S	10	-SET							
MRWZ-CP	12	(Only when purchasing support units in set)							
MRWZ-LP	15								

# Lead Screw Support Units - Round

## Support Side



☞ Support Side Support Unit can be purchased as the separate unit. Instead of this, however, purchasing it in combination with Fixed Side Support Unit (**P.793**) as set is the more economical.



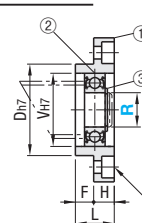
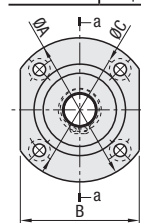
RoHS10

☞ This is the same product as Support Side Set in **P.793**

Number	Part Name	Quantity
①	Housing	1
②	Radial Bearing	1
③	Retaining Ring for Shaft (Included)	1

Contrary to image on the photo, Radial Bearing on ②, as well as Retaining Ring for Shaft, is already included with the support unit when the support unit is shipped.

Type	Material	Surface Treatment
MRUZ	EN 1.1191 Equiv.	Black Oxide



☞ How to use Retaining Ring for Shaft



③ Retaining Ring for Shaft (Accessory) should be used for fixing the shaft part. Use Lead Screws for Support Units (**P.789**) in combination with this ring, or select a product with the retaining shaft groove added on the shaft part.

Part Number	Type	R	L	H	F	D	A	C	B	V	d1	d2	ℓ	Bearing Type	Retaining Ring for Shaft	MRUZ	
																Unit Price	Volume Discount Rate
MRUZ		8	13	7	6	28	45	35	35	22	3.4	6.5	4	B608ZZ	NETW5	1 ~ 4 pc(s).	5 ~ 10 pcs.
		10	14	7	7	34	52	42	42	26	4.5	8	4.5	B6000ZZ	STWN10		
		12	15	8	7	36	54	44	44	28	4.5	8	4.5	B6001ZZ	STWN12		
		15	17	9	8	40	63	50	52	32	5.5	9.5	5.5	B6002ZZ	STWN15		

Ordering Example Part Number  
MRUZ15

Example

### Stop Plate Set



### Stop Plate Set for Digital Position Indicators Compact Mount

The orientation of clamp lever can be toggled to the opposite side by trying to mount the stop plate set in a different manner.



### Stop Plate Set for Large Position Indicator Mount

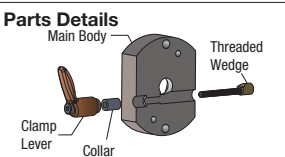
The mounting position of clamp lever can be changed from the right side to the left side and vice versa.



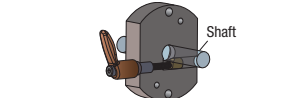
☞ Position Indicators are sold separately. ☞ **P. 811, 812**

### Features of Stop Plate Set, Wedge Mechanism

- The screw pulls the wedge up and fastens the stop plate to the shaft to require less torque force to tighten.
- High performance and optimal for the case where frequent adjustment is required. Brass wedges cause less damage to shafts.



### Image of Clamped State



### Support Unit Mounting Procedure



- Insert the lead screw shaft into the fixed side support unit.
- After slipping a collar on, thread the included bearing nut on and temporarily tighten at 1/3 of the specified tightening torque. Mount the support side unit on the support end of the shaft and mount.
- While rotating the screw shaft, gradually tighten the bearing nut to obtain smooth motion from end to end.
- When smooth motion is obtained, tighten to full tightening torque to finish.

M	Nut Tightening Torque (N · cm)	Part Number
8	490	BNR8
10	930	BNR10
12	1370	BNR12
15	2350	BNR15

☞ Value is for reference only.