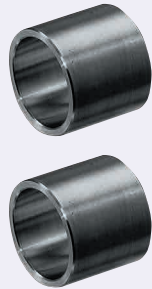


Bearing Spacers

Bearing Inner, Outer Rings

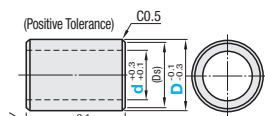
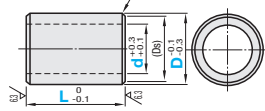


RoHS 10

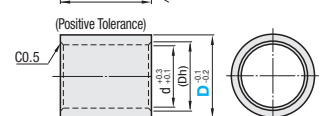
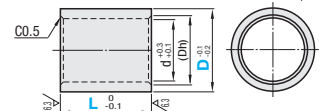
Applicable	L Dimension Tolerance		Material	Surface Treatment
	Negative Tolerance	Positive Tolerance		
For Inner Ring	CLBU	CLBP	Aluminum Alloy 5000 series	-
	CLBUB	CLBUB	EN 1.0038 Equiv.	Black Oxide
	CLBUM	CLBPM	EN 1.4301 Equiv.	Electroless Nickel Plating

Applicable	L Dimension Tolerance		Material	Surface Treatment
	Negative Tolerance	Positive Tolerance		
For Outer Ring	CLBS	CLBT	EN AW-5052 Equiv.	-
	CLBSB	CLBTB	EN 1.0038 Equiv.	Black Oxide
	CLBSM	CLBTM	EN 1.4301 Equiv.	Electroless Nickel Plating

■ For Inner Ring (Negative Tolerance) C0.5



■ For Outer Ring (Negative Tolerance) C0.5



* L= Less than 3, C0.2 or less

Part Number	Type	d	D	L 0.1mm Increment	Ds	Applicable Bearing	Unit Price												
							CLBU, CLBP			CLBUB, CLBUB			CLBUM, CLBPM			CLBUS, CLBPS			
							L1.0-25.0	25.1-50.0	50.1-100.0	L1.0-25.0	25.1-50.0	50.1-100.0	L1.0-25.0	25.1-50.0	50.1-100.0	L1.0-25.0	25.1-50.0	50.1-100.0	
3	5	4	673ZZ, 693ZZ, 623ZZ	1.0~50.0	4														
4	7	6	674ZZ*, 694ZZ, 624ZZ	1.0~50.0	6														
5	8	7	675ZZ*, 695ZZ, 605ZZ, 625ZZ	1.0~50.0	7														
6	9	8	676ZZ, 696ZZ, 606ZZ, 626ZZ	1.0~50.0	8														
8	10	9	678ZZ	1.0~50.0	9														
10	11	10	678ZZ, 698ZZ, 608ZZ, 628ZZ	1.0~50.0	10														
10	12	11	6700ZZ	1.0~100.0	11														
10	13	12	6800ZZ	1.0~100.0	12														
10	14	13	6900ZZ, 6000ZZ	2.0~100.0	13														
10	15	14	6200ZZ, 6300ZZ	2.0~100.0	14														
12	16	15	6701ZZ, 6801ZZ	1.0~100.0	15														
12	17	16	6801ZZ, 6001ZZ	1.0~100.0	16														
12	18	17	6201ZZ, 6301ZZ	1.0~100.0	17														
15	18	17	6702ZZ, 6902ZZ	1.0~100.0	18														
15	19	18	6902ZZ, 6002ZZ	1.0~100.0	19														
15	20	19	6202ZZ	1.0~100.0	20														
15	21	20	6302ZZ	1.0~100.0	21														
15	22	21	6803ZZ	1.0~100.0	22														
15	23	22	6903ZZ, 6003ZZ	1.0~100.0	23														
17	24	23	6203ZZ	1.0~100.0	24														
17	25	24	6303ZZ	1.0~100.0	25														
20	23	22	6804ZZ	2.0~100.0	26														
20	24	23	6904ZZ	2.0~100.0	27														
20	25	24	6204ZZ	2.0~100.0	28														
20	26	25	6304ZZ	2.0~100.0	29														
25	28	27	6805ZZ	2.0~100.0	30														
25	29	28	6905ZZ	2.0~100.0	31														
25	30	29	6205ZZ	2.0~100.0	32														
25	31	30	6305ZZ	2.0~100.0	33														
30	33	32	6806ZZ	3.0~100.0	34														
30	34	33	6906ZZ	3.0~100.0	35														
30	35	34	6206ZZ	3.0~100.0	36														
30	36	35	6306ZZ	3.0~100.0	37														
35	38	37	6807ZZ	3.0~100.0	38														
35	39	38	6907ZZ	3.0~100.0	39														
35	40	39	6207ZZ	3.0~100.0	40														
35	41	40	6307ZZ	3.0~100.0	41														
40	42	41	6808ZZ	3.0~100.0	42														
40	43	42	6908ZZ	3.0~100.0	43														
40	44	43	6208ZZ	3.0~100.0	44														
40	45	44	6308ZZ	3.0~100.0	45														
45	53	52	6809ZZ	3.0~100.0	53														
45	54	53	6909ZZ	3.0~100.0	54														
45	55	54	6209ZZ	3.0~100.0	55														
50	56	55	6309ZZ	3.0~100.0	56														
50	60	59	6210ZZ	3.0~100.0	60														

⚠ When L=less than 3, *marked bearings cannot be used.

Part Number	Type	D	L 0.1mm Increment	d	Dh	Applicable Bearing	Unit Price												
							CLBS, CLBT			CLBSB, CLBTB			CLBSM, CLBTM			CLBS*, CLBTS*			
							L1.0-25.0	25.1-50.0	50.1-100.0	L1.0-25.0	25.1-50.0	50.1-100.0	L1.0-25.0	25.1-50.0	50.1-100.0	L1.0-25.0	25.1-50.0	50.1-100.0	
6	4	5	673ZZ	1.0~50.0	4														
7	5	6	674ZZ	1.0~50.0	6														
8	5	6	693ZZ	1.0~50.0	6														
10	7	8	623ZZ	1.0~50.0	8														
11	7	8	694ZZ	1.0~50.0	8														
13	9	10	624ZZ, 695ZZ	1.0~50.0	10														
14	10	11	605ZZ	1.0~50.0	11														
15	10	11	696ZZ	1.0~50.0	11														
16	11	12	625ZZ	1.0~50.0	12														
17	12	13	606ZZ	1.0~50.0	13														
19	14	15	626ZZ, 698ZZ	3.0~50.0	15														
19A	16	17	6800ZZ	3.0~50.0	17														
21	18	19	6801ZZ	3.0~50.0	19														
22	17	18	608ZZ, 6900ZZ	3.0~50.0	18														
24	19	20	628ZZ, 6901ZZ	3.0~50.0	20														
24A	21	22	6802ZZ	3.0~50.0	22														
26	20	21	6000ZZ	3.0~50.0	21														
26A	23	24	6803ZZ	3.0~50.0	24														
28	22	23	6001ZZ, 6902ZZ	3.0~50.0	23														
30	24	25	6200ZZ	3.0~50.0	25														
32	25	26	6201ZZ, 6002ZZ	3.0~50.0	26														
32A	29	30	6804ZZ	3.0~50.0	30														
35	29	30	6202ZZ	3.0~100.0	29														
37	31	32	6904ZZ	3.0~100.0	32														
37A	34	35	6805ZZ	3.0~100.0	35														
42	34	35	6004ZZ, 6905ZZ	3.0~100.0	35														
42A	39	40	6806ZZ	3.0~100.0	40														
47	39	40	6204ZZ, 6005ZZ, 6906ZZ	3.0~100.0	40														
47A	44	45	6807ZZ	3.0~100.0	45														
52	45	46	6205ZZ	3.0~100.0	46														
52A	49	50	6808ZZ	3.0~100.0	50														
55	46	47	6006ZZ	3.0~100.0	47														
62	55	56	6206ZZ, 6007ZZ, 6908ZZ	3.0~100.0	56														
70	63	64	6207ZZ	3.0~100.0	64														

Ordering Example: Part Number - D - L
 CLBU10 - 17 - 33.5
 CLBS19 - - 25.4

Alterations: Part Number - D - L - (LKC, UKC)
 CLBU10 - 17 - 26.3 - LKC
 CLBS19 - - 25.4 - LKC

Alterations	Code	Spec.
	LKC (Negative Tolerance)	Overall Length Tolerance 0 ... 0 L-0.1 ... -0.02
	UKC (Positive Tolerance)	Overall Length Tolerance +0.1 ... +0.02 L 0 ... 0