

# Plastic Chain Conveyors

Single Track, Head Drive, 3-Slot Frame (Sprocket Dia. 57mm)

■ **Features:** Use of Plastic Chains prevents scratches, and makes for easy maintenance.



**CVSPC**  
6W Motor Type

	Frame	Motor Cover	Pulley Holder	Plastic Chain
<b>M</b> Material	Aluminum	Aluminum	EN AW-5052 Equiv.	Polycetal
<b>S</b> Surface Treatment	Clear Anodize	Paint	Clear Anodize	-

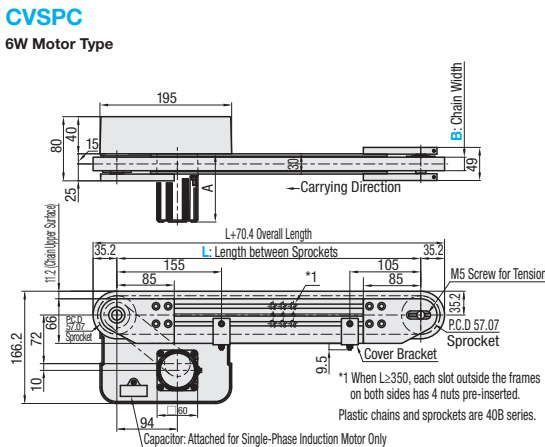
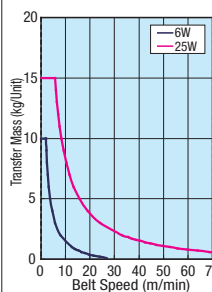
■ **Gearhead Reduction Ratio**

\*May decrease depending on load condition.

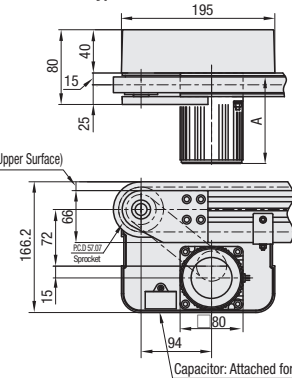
Gearhead Reduction Ratio	Belt Speed (m/min)	50Hz	60Hz
5	53.7	64.4	
7.5	35.8	43.0	
9	29.8	35.8	
12.5	21.5	25.8	
15	17.9	21.5	
18	14.9	17.9	
25	10.7	12.9	
30	9.0	10.7	
36	7.5	9.0	
50	5.4	6.4	
60	4.5	5.4	
75	3.6	4.3	
90	3.0	3.6	
100	2.7	3.2	
120	2.2	2.7	
150	1.8	2.1	
180	1.5	1.8	

■ **Conveying Capacity**

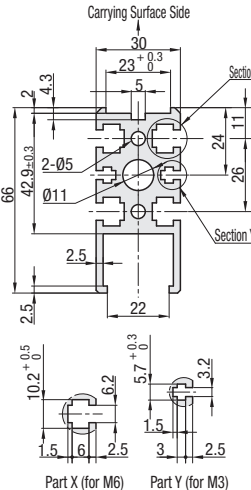
\* Reference Value



25W Motor Type



Frame Cross Section and Enlarged View (Symmetrical)



Compatible with JIS standard hex nuts.

\* A Dimension Details

Output (W)	Motor Specification	Manufacturer	Reduction Ratio	A
6W	Induction Motor	Panasonic Motor	12.5~25	101.0
		Oriental Motor	12.5~25	105.0
	Variable Speed Motor Control Motor	Panasonic Motor	12.5~25	111.0
		Oriental Motor	12.5~25	115.0
	Induction Motor	Panasonic Motor	12.5~180	115.0
		Oriental Motor	12.5~18	117.0
25W	Variable Speed Motor Control Motor	Panasonic Motor	12.5~180	125.0
		Oriental Motor	12.5~18	127.0
	Induction Motor	Panasonic Motor	12.5~180	127.5
		Oriental Motor	12.5~18	137.5

Part Number	B Selection	L 5mm Increment	Motor				Plastic Chain Belt Specification	Motor Manufacturer Selection ⚠️ The prices vary by manufacturer
			Output (W)	Voltage (V)	Specification	Gearhead Reduction Ratio		
CVSPC	20	350~3000	6 25	TA230 (Single-phase)	IM (Induction Motor) SCM (Variable Speed Motor)	5 7.5 9 12.5 15 18 25 30 36 50 60 75 90 100 120 150 180	H (Standard, White) D (Conductive, Black) L (Chemical Resistant, Mat White) E (Heat Resistant, Black) J (No Belt)	A (Panasonic Motor) B (Oriental Motor)
			25			⚠️ 5~9 not applicable for 6W Motor		
			6 25	NV (No Motor)	NM (No Motor)	NH (No Gearhead)		R (No Motor, Gearhead)

Connect the motor so that the chain rotates in the direction of conveyance. For connection diagram, and details of motor and motor driver, see P. 1267 onward. For belt details, see P. 1279 onward.  
When "No motor, gearhead" is selected, the motor mounting hole pitch will vary depending on the motor's power rating. Please see Technical Information in our Conveyor Selection web site for the dimension details.  
When "No motor, gearhead" is selected, this unit will be delivered unassembled. The customer is to assemble the unit according to the included assembly instructions. See our Conveyor Selection site for assembly procedures and packaging details.  
Since plastic chain is subject to abrasion and produces dust during use, it is not suitable for the use in the clean room. This, however, does not affect functionality of conveyance.

Part Number	B	L350~400	L405~500	L505~600	L605~700	L705~800	L805~900	L905~1000	L1005~1100	L1105~1200	L1205~1300	L1305~1400	L1405~1500	L1505~1600	L1605~1700	L1705~1800	L1805~1900	L1905~2000	L2005~2200	L2205~2400	L2405~2600	L2605~2800	L2805~3000
CVSPC	20																						

For orders larger than indicated quantity, Days to Ship and Price are to be quoted.

Motor, Belt Spec. Price	Motor Output	Specification	A (Panasonic Motor)	B (Oriental Motor)	R (No Motor, Gearhead)	H (Standard)	D (Conductive)	L (Chemical Resistant)	E (Heat Resistant)	J (No Belt)
	6W	IM								
	25W	SCM								

Ordering Example	Part Number	B	L	Motor	Output	Voltage	Specification	Gearhead Reduction Ratio	Belt Specification	Motor Manufacturer Selection
CVSPC	20	1000	25	TA230	IM	25	H			A

Ex.) For No Belt  
Ex.) For No Motor, Gearhead  
CVSPC-20-1000-25-T100-SCM-25-J-A  
CVSPC-20-1000-25-NV-NM-NH-H-R

Body Price + Motor, Belt Spec. Price = Unit Price

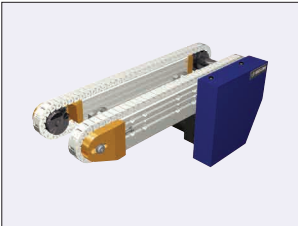
Alterations	Motor Position Reversed	Additional Counterbores	Motor Cover with Window	Brackets for Speed Controller Included	Post-Assembly Insertion Nuts Included	Motor with Terminal Box	Orthogonal Shaft Gear Head

For details of alterations, see P. 1264 onward.

# Plastic Chain Conveyors

Dual Track, Head Drive, 3-Groove Frame (Sprocket Dia. 57mm)

■ **Features:** Since there are two rows of conveyor surfaces, sensors and stoppers can be mounted in between the belts. Use of Plastic Chains prevents scratches, and makes for easy maintenance.



**CVSPA**  
25W Motor Type

	Frame	Motor Cover	Pulley Holder	Plastic Chain
<b>M</b> Material	Aluminum	EN AW-5052 Equiv.	EN AW-5052 Equiv.	Polycetal
<b>S</b> Surface Treatment	Clear Anodize	Paint	Gold Anodize	-

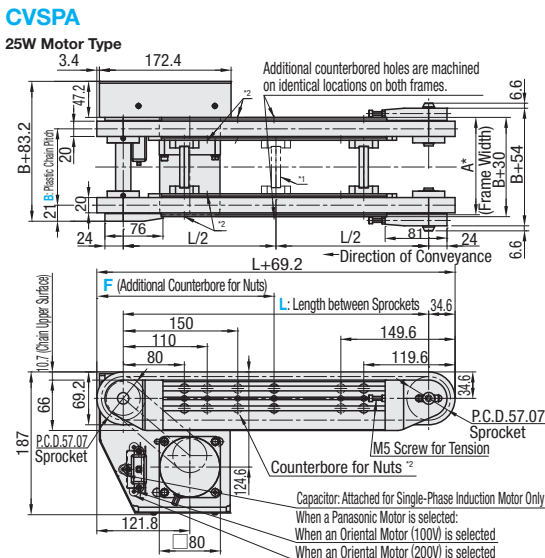
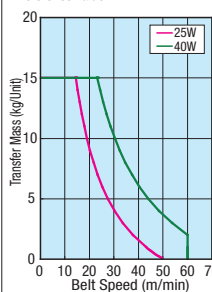
■ **Gearhead Reduction Ratio**

\*May decrease depending on load condition.

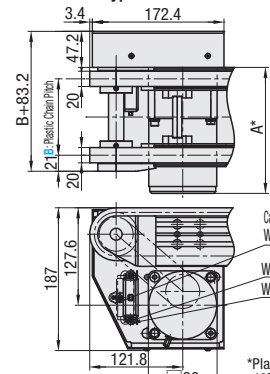
Gearhead Reduction Ratio	Belt Speed (m/min)	50Hz	60Hz
5	53.7	64.4	
7.5	35.8	43.0	
9	29.8	35.8	
12.5	21.5	25.8	
15	17.9	21.5	
18	14.9	17.9	
25	10.7	12.9	
30	9.0	10.7	
36	7.5	9.0	
50	5.4	6.4	
60	4.5	5.4	
75	3.6	4.3	
90	3.0	3.6	
100	2.7	3.2	
120	2.2	2.7	
150	1.8	2.1	
180	1.5	1.8	

■ **Conveying Capacity**

\* Reference Value



40W Motor Type



\*1: When L≥1005, joint mounted  
\*2: When L≤505, counterbores for the nuts will not be provided. However, each slot has 3 pre-inserted nuts provided.

\* A Dimension Details

Output (W)	Motor Specification	Manufacturer	Reduction Ratio	A
25W	Induction Motor	Panasonic	5~180	115.0
		Oriental	5~18	117.0
	Variable Speed Motor	Panasonic	25~180	127.5
		Oriental	5~180	125.0
	Induction Motor	Panasonic	5~180	142.0
		Oriental	5~18	147.0
40W	Variable Speed Motor	Panasonic	25~180	165.0
		Oriental	5~180	157.0
	Induction Motor	Panasonic	5~180	175.0
		Oriental	5~18	175.0

Part Number	B 10mm Increment	L 5mm Increment	Motor					Belt Specification	F (Additional Counterbores 5mm Increment)	Motor Manufacturer Selection  ⚠️The prices vary by manufacturer.		
			Output (W)	Voltage (V)	Specification	Gearhead Reduction Ratio						
CVSPA	80~300	300~3000	25 40	TA230 (Single-phase)	IM (Induction Motor) SCM (Variable Speed Motor)	5 18 60 150	7.5 25 75 180	9 30 90 100	12.5 36 50 120	H (General Purpose) D (Conductive, Black) J (No Belt)	205<F<L-105 *When not specified, there will be no additional counterbores.	A (Panasonic Motor) B (Oriental Motor)
				NV (No Motor)	NM (No Motor)	NH (No Gearhead)						R (No Motor, Gearhead)

Connect the motor so that the chain rotates in the direction of conveyance. For connection diagram, and details of motor and motor driver, see P. 1267 onward. For belt details, see P. 1279 onward.  
When "No motor, gearhead" is selected, the motor mounting hole pitch will vary depending on the motor's power rating. Please see Technical Information in our Conveyor Selection web site for the dimension details.  
When "No motor, gearhead" is selected, this unit will be delivered unassembled. The customer is to assemble the unit according to the included assembly instructions. See our Conveyor Selection site for assembly procedures and packaging details.  
Since plastic chain is subject to abrasion and produces dust during use, it is not suitable for the use in the clean room. This, however, does not affect functionality of conveyance.

Part Number	B	L300~450	L455~500	L505~600	L605~700	L705~800	L805~900	L905~1000	L1005~1100	L1105~1200	L1205~1300	L1305~1400	L1405~1500	L1505~1600	L1605~1700	L1705~1800	L1805~1900	L1905~2000	L2005~2600	L2605~2700	L2705~2800	L2805~2900	L2905~3000
CVSPA	80~100 110~200 210~300																						

For orders larger than indicated quantity, Days to Ship and Price are to be quoted.

Motor, Belt Spec. Price	Motor Output	Specification	A (Panasonic Motor)	B (Oriental Motor)	R (No Motor, Gearhead)	H (Standard)	D (Conductive)	J (No Belt)
	25W	IM						
	40W	SCM						

Ordering Example	Part Number	B	L	Motor	Output	Voltage	Specification	Gearhead Reduction Ratio	Belt Specification	F	Motor Manufacturer Selection
CVSPA	100	750	25	TA230	IM	90	H			F300	A

Ex.) For No Motor, Gearhead  
Ex.) For No Belt  
CVSPA-100-1000-25-NV-NM-NH-H-F300-R  
CVSPA-100-1000-25-T100-IM-5-J-B

Body Price + Price with Motor + Belt Spec. Price = Unit Price

Alterations	Motor Position Reversed	Brackets for Speed Controller Included	Post-Assembly Insertion Nuts Included	Motor with Terminal Box	Stands (Legs)

For details of alterations, see P. 1264 onward.